

Historic, Archive Document

Do not assume content reflects current scientific knowledge, policies, or practices.



62.91

LAMB NURSERIES

E. 101 SHARP AVENUE

SPOKANE

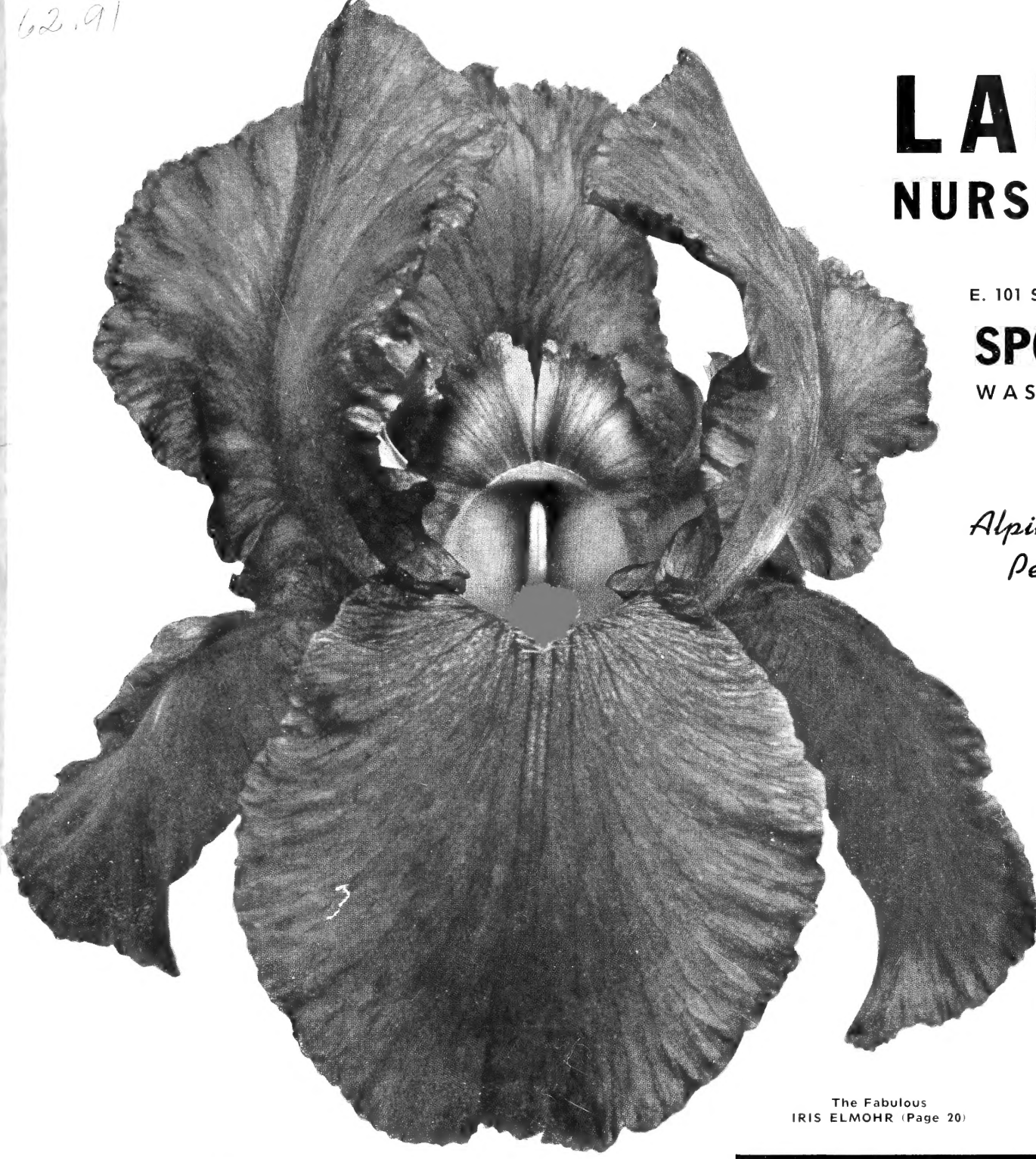
WASHINGTON

Alpines

Perennials

Iris

Shrubs



LIBRARY
RECEIVED
★ JAN 31 1951 ★
U. S. Department of Agriculture

The Fabulous
IRIS ELMOHR (Page 20)



HEMEROCALLIS
MIKADO (Page 16)

SPRING
and
FALL
1951



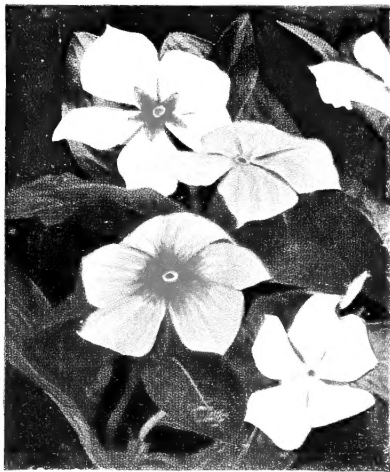
SPOON CHRYSANTHEMUM (Page 10)



SPIREA ASTILBE FANAL (Page 32)



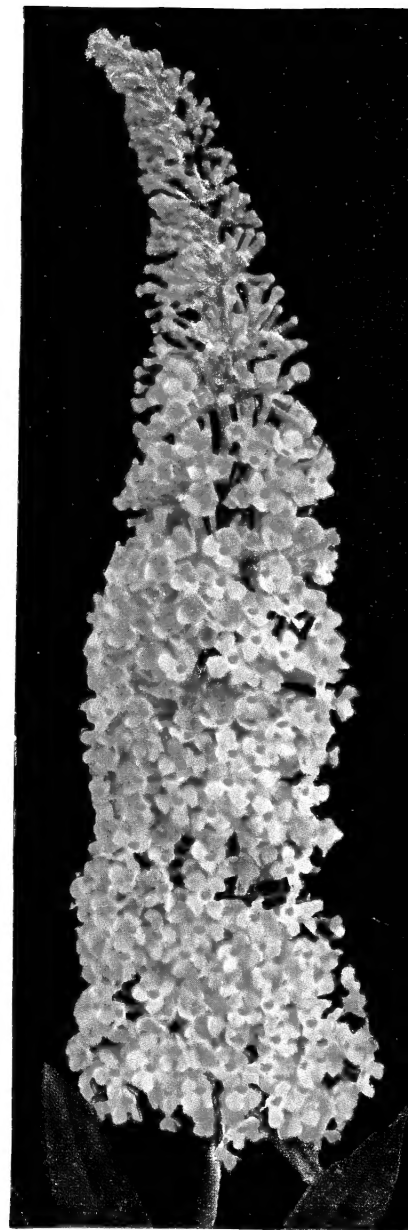
GENTIANA ACAULIS (Page 15)



PHLOX SUBLATA (Page 26)



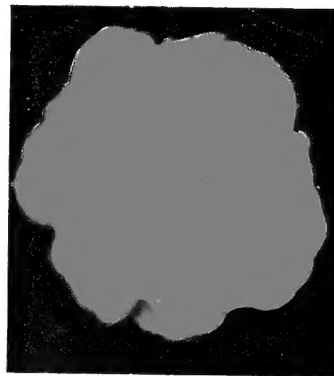
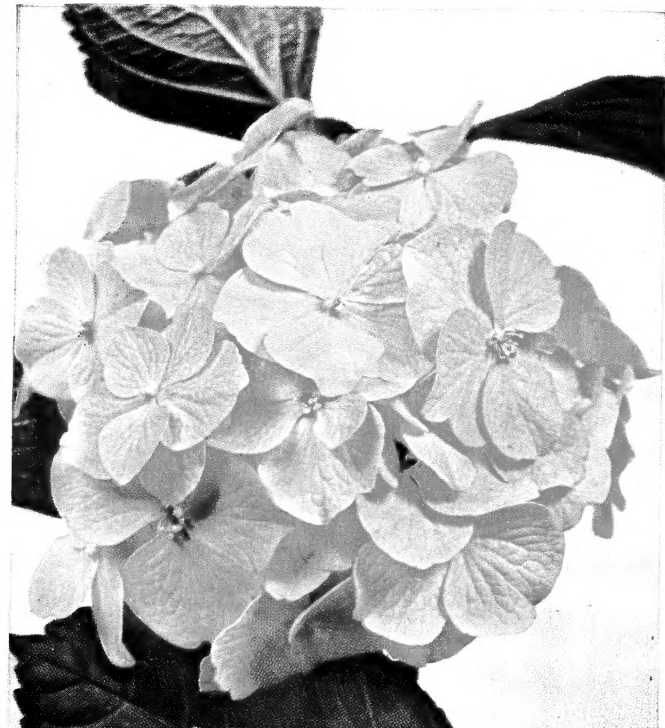
TRITOMA (RED HOT POKER) Page 32



BUDDLEIA CHARMING (Page 35)

HYDRANGEA HORTENSIS (Page 15)

VIOLET ROYAL ROBE (Page 34)



TROLLIUS LEMON QUEEN (Page 32)



Bargain Iris Collection

GROUP NO. 1

11 Aristocrats \$15.00

**Select
any
Three**

**Blue Champagne
Alba Superba
Katherine Fay
Hoogsan
Indiana Night
Solid Mahogany**

**Select
any
Four**

**Bandmaster
Jasper Agate
Lady Mohr
Mary Vernon
Mexico
Minnie Colquitt
Ranger
Sylvia Murray
Tea Rose
White Wedgewood**

**Select
any
Four**

**Azure Skies
Blue Shimmer
Brown Thrasher
Daybreak
Moonlight Madonna
Ola Kala
Painted Desert
Sharkskin
Sonrisa**

SPECIAL EARLY ORDER DISCOUNT

We will allow a 10% discount from catalog prices on all plant orders received before January 15, 1951, and 5% on all orders received before February 1, 1951.

Money positively must reach us before the above dates to obtain this discount. Plants will be shipped at proper planting time.

Hurry!!

***Mail your order today
and save!!***



LAMB NURSERIES

E. 101 Sharp

Spokane 11, Wn.

HARDY PERENNIALS and ALPINES

AETHIONEMA (E-thi-on'-ema)—Persian Candytuft

A fascinating family of prostrate shrubby evergreen perennials having glaucous blue-green needle-like leaves which are ornamental the year around in the rockery, wall garden, or border. A well drained soil with full sun suits them best.

***persicum**—Short prostrate branches of rich bluish cast and numerous heads of soft rose flowers. **40c each; 3 for \$1.10**

***pulchellum**—Form strong twiggy bushes 6" high and 8" across which are almost hidden by long spires of deep rose, red-veined flowers. We highly recommend this one.

50c each; 3 for \$1.25; doz. \$4.50

***schistosum**—Large heads of lovely soft pink flowers with veining of deep rose. Large individual florets, wonderfully fragrant and ideal for cutting. 10".

65c each; 3 for \$1.65; doz. \$6.00

***Warley Rose**—A very permanent slow growing shrublet forming neat, compact plants. In May every little twig bursts into glorious bloom. The flowers are a rich bright pink, identical in form with the popular *Daphne cneorum*.

50c each; 3 for \$1.25; doz. \$4.50

***Borsch's Sport**—A deeper, rosy red form of Warley Rose.

75c each; 3 for \$2.00; doz. \$7.50

One each of the 5 Aethionemas \$2.50

ANDROSACE (An-dros'-a-see)—Rock Jasmine

Among the choicest of alpines come the Androsace. No other family puts on quite such a parade as these, changing their entire appearance several times each year and always remaining an interesting and lovely subject whether rolled into a small furry burr in late fall or gaily displaying its dainty flowers to the sun, or again busily increasing the colony after the blooming is over.

***sarmentosa**—Forming many silvery rosettes of silky foliage which throw up dainty heads of verbena-like bright pink flowers. Indescribably lovely both as to flowers and year around foliage. Should be in every collection.

55c each; 3 for \$1.40

ANCHUSA (An-shu'za)—Alkanet

The family is noted for ease of culture and brilliance of color. Blooming profusely for a long season, the ecstatic blues fill the need of pure vivid color in the border. Full sun or partial shade.

Morning Glory—Deep Gentian blue flowers of large size on well branched 4' plants. Long lived valuable border plant.

40c each; 3 for \$1.10; doz. \$3.50

***myosotidiflora**—Really a glorified Forget-me-not growing 8" tall and giving a wealth of small bright blue flowers.

50c each; 3 for \$1.25; doz. \$4.50

One each of the Anchusas 85c

ASARUM (As-ar'-um)—Wild Ginger

A native ground cover for shady moist places. Excellent for growing along the pool or stream, under trees, bushes, etc., or for covering bulb beds.

***caudatum**—Dark evergreen heart-shaped leaves from a creeping root stock and dark red flowers all season.

40c each; 3 for \$1.10

AJUGA (A-ju'ga)—Bugle

A splendid rockery specimen or quick growing ground cover for a shady spot where the fine foliage soon forms large evergreen mats of varied color.

***genevensis**—Rich dark green foliage and deep blue flowers on 6" spikes.

40c each; 3 for \$1.10; doz. \$4.00

***reptans alba**—A new form with snowy white flowers.

45c each; 3 for \$1.15; doz. \$4.25

***reptans fol. variegata**—Silver and green foliage with decided rose tints. Very attractive. Blue flowers.

45c each; 3 for \$1.15; doz. \$4.25

***reptans, Rosy Spires**—Lovely pink flowers above dark green mats.

50c each; 3 for \$1.25

One each of the 4 Ajugas \$1.65

ARTEMISIA (Ar-te-mis'-i-a)—Southernwood

A striking group for a sunny location greatly beloved for their aromatic foliage which is unsurpassed for use with cut flowers.

dracunculus (Tarragon)—Grown not only for the fine shapely bush covered with purple flowers, but as a culinary herb useful in making vinegar and for seasoning.

45c each; 3 for \$1.15

***frigida**—Soft silken foliage of glistening silver in 6" mounds. A striking accent plant for rockery or wall.

50c each; 3 for \$1.25

lactiflora—A most attractive plant with astilbe-like, fragrant creamy white flowers, scenting the whole garden in August and September. 4'.

45c each; 3 for \$1.15

Silver King (Ghost Plant)—Striking variety with leaves like frosted silver, forming perfect mounds of white. Should be in every garden. 4'.

50c each; 3 for \$1.25

One each of the 4 Artemisias \$1.75

ARENARIA (Air-ee-nair'-i-a)—Sandwort

Dainty little creepers for the rockery or between stepping stones. Full sun and moderate moisture.

***verna**—Like an emerald moss above which seem to float tiny white flowers on 1" stems.

40c each; 3 for \$1.10; doz. \$4.00

***verna aurea**—Rare form of golden moss.

40c each; 3 for \$1.10; doz. \$4.00

One each of the 2 Arenarias 75c

ALLIUM (Al'-li-um)—Flowering Onions

A family of exquisite beauty blooming profusely and increasing in beauty each year. Should be grown in groups and allowed to form clumps for the best effect. Their airy, lacy blooms and dainty grassy foliage form distinct and pleasing contrast in the rockery, wall or border. Quite indifferent to soil, for full sun or light shade. An unusually long-lasting cut flower. May be planted spring or fall.

***album**—Glorious snow white flowers on sturdy 18" stems.

40c each; 3 for \$1.10; doz. \$4.00

***brevistylum**—Nodding umbels of fine pink flowers.

40c each; 3 for \$1.10; doz. \$4.00

***flavum minor**—Bright golden yellow flowers on wiry 6" stems.

40c each; 3 for \$1.10; doz. \$4.00

***globosum**—Large ball-shaped heads of rich mulberry purple.

40c each; 3 for \$1.10

***prairiensis**—Lovely profuse blooming bright pink.

40c each

***pulchellum**—Large lacy heads of dainty lavender-rose flowers in midsummer. One of the most effective specimens we know.

45c each; 3 for \$1.15

***tibeticum**—Fine mauve flowers in May. 10".

40c each; 3 for \$1.10; doz. \$4.00

One each of the 7 Alliums \$2.60

AMSONIA (Am-soh'-ni-a)

tabernaemontana—Free flowering border plant having long willowy stalks of soft blue flowers. A fine specimen for the sunny border blooming over a long season.

40c each; 3 for \$1.10; doz. \$3.50

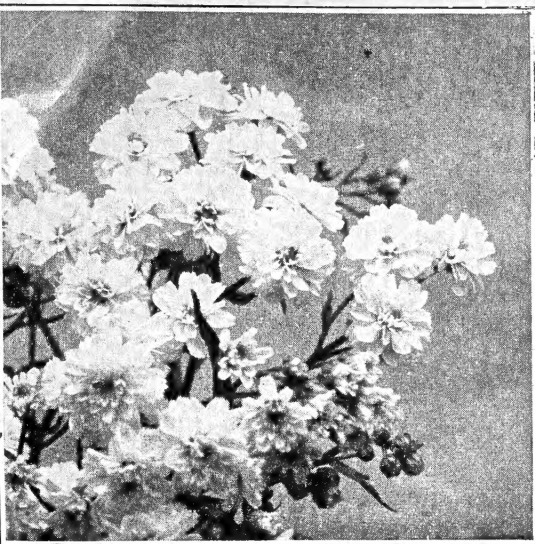
ANTHERICUM (An-ther'-i-kum)—St. Bruno's Lily

A graceful and useful plant having grass-like leaves and fine lily-like flowers. A good cut flower and lovely in the rockery or border. Full sun.

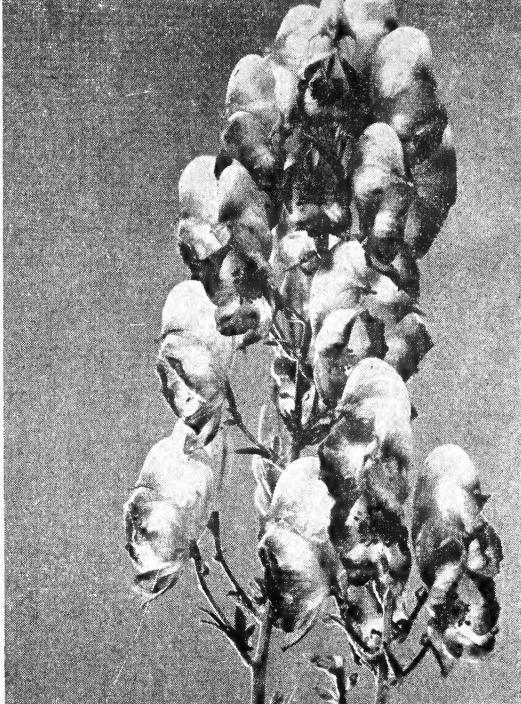
***ramosum**—Dainty white flowers in clusters on strong wiry stems in July. Hardy and permanent.

55c each; 3 for \$1.40

AURICULA—See *Primula auricula*



ACHILLEA BOULE DE NEIGE



ACONITUM NAPELLUS BICOLOR



ASTER ALPINUS GOLIATH (Page 7)

ACHILLEA (A-kil-lee'-a)—Milfoil or Yarrow

Beautiful fern-like aromatic foliage for dry exposed places, giving a wealth of bloom during the whole season. The genus with which Achilles is reputed to have cured the wounds of his soldiers.

- ***argentea**—Lovely mounds of dainty frosted silver surmounted by snow white Daisies on 4" stems. Sun. **40c each; 3 for \$1.10; doz. \$4.00**
- ***millefolium roseum**—Brilliant red flowers in dense heads blooming continuously. 15". **45c each; 3 for \$1.15**
- filipendulina, Parker's variety**—3'; June to September. Clear yellow flower heads **45c each; 3 for \$1.15**
- ***ptarmica, Boule de Neige**—Pure white double flowers in great profusion. 15". **40c each; 3 for \$1.10**
- ***tomentosa**—Woolly mats of soft grey with golden yellow blooms on a 6" stem. July to September. **50c each; 3 for \$1.25**

One each of the 5 Achilleas \$2.05

ACONITUM (Ak-oh-ny'-tum)—Monkshood

Stately perennials having finely cut leaves and branching racemes of hood shaped flowers; at home in sun or shade in a rich moist soil. Excellent cut flowers.

- anthora**—Pale yellow on 3' stems during June and July. **65c each; 3 for \$1.65; doz. \$6.00**
- Barker's Variety**—Immense heads of soft powder blue on 6' stalks in September. **65c each; 3 for \$1.65; doz. \$6.00**
- fischeri**—2' stems of lovely pale blue during September when flowers are very scarce. **50c each; 3 for \$1.25; doz. \$4.50**
- napellus**—Fine dark blue which will bloom several times if kept cut back, 4'. **50c each; 3 for \$1.25; doz. \$4.50**
- napellus bicolor**—Like above with blue and white flowers. **65c each; 3 for \$1.65; doz. \$6.00**
- napellus, Sparks variety**—Deep purple in branched spikes. 3'. **50c each; 3 for \$1.25; doz. \$4.50**

One each of the 6 Aconites \$3.25

ARMERIA (Ar-meer'-ia)—Thrift or Sea Pink

A most satisfactory family of rock or wall plants forming neat grassy clumps which never get out of bounds.

- ***maritima alba**—Dainty heads of pure white flowers, blooming all season 4". **40c each; 3 for \$1.10; doz. \$4.00**
 - ***maritima brilliant**—A constant bloomer, with brilliant cherry-red flowers. 4". **40c each; 3 for \$1.10; doz. \$4.00**
 - ***setacea (juniperifolia)**—Dainty rosy-pink flowers above slightly silvered cushions. About the most persistent bloomer in our garden. 3". **50c each; 3 for \$1.25; doz. \$4.50**
- One each of the 3 Armerias \$1.20

AUBRIETIA (Ah-bre'-she-a)—Rock Cress

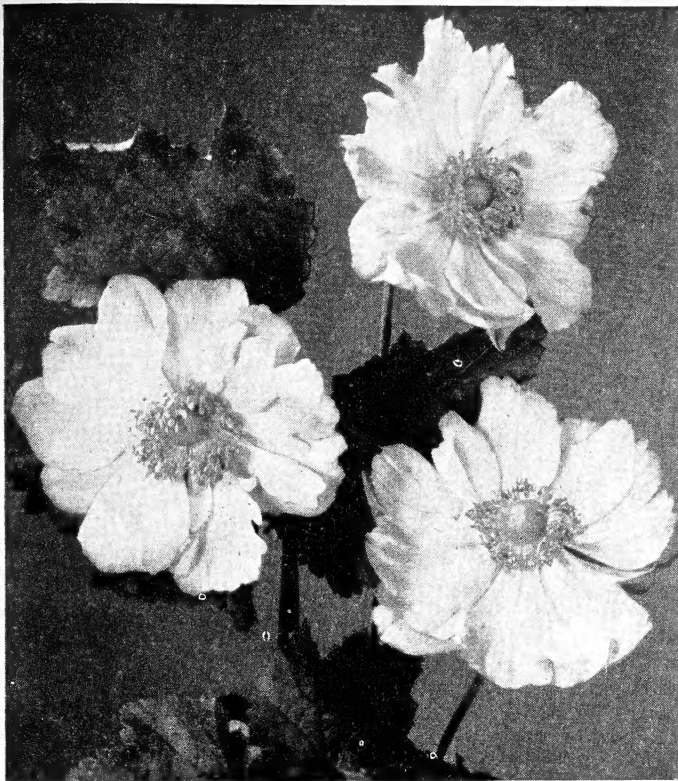
For brilliance of mass color effect, Aubrietias have few equals. Although primarily a rock garden plant, they are equally valuable for edgings or spotted through the front row of the border. In the latter case they should be planted in groups 6" apart. They are also excellent cover for bulb beds, forming solid sheets of color from 2" to 4" high for weeks on end. If sheared lightly in July will give another performance in late August and September.

- ***Borsch's Brilliant**—Brilliant crimson. **50c each; 3 for \$1.25**
 - ***Borsch's White**—A fine new white. The first of this color to be introduced. **75c each; 3 for \$2.00**
 - ***bougainvillea**—Deep blue. **40c each; 3 for \$1.10**
 - ***Crimson King**—Large crimson. **40c each; 3 for \$1.10**
 - ***Gloriosa**—Very large soft clear pink. **50c each**
 - ***Gurgedyke**—A distinctly new shade in this amazing family. Brilliant red-purple flowers almost competely hide the foliage. **\$1.50 each**
 - ***Lamb's Brilliant**—The brightest red we have ever found. Strong grower and very showy. **75c each**
 - ***Mrs. Lloyd Edwards**—Crimson purple. **45c each; 3 for \$1.15**
 - ***Pink Parachute**—Soft Dianthus pink. **40c each; 3 for \$1.10**
 - ***Purdy's Brilliant**—Stunning bright rose-pink flowers. A most persistent bloomer. Compact habit. Very desirable. **55c each**
 - ***Purple Heart**—Very large double flowers of deep glowing purple. The finest double form yet. **\$1.50 each**
 - ***Vindictive**—Deep red. **40c each; 3 for \$1.10**
- One each of the Named Aubrietias \$7.50
- ***New Giant Flowered**—Vastly superior to all former mixed sorts. Very highly recommended. **40c each; 3 for \$1.10; doz. \$4.00**

ANTHEMIS (An'-thi-mis)—Golden Marguerite

Extremely free flowering plants for the border, furnishing an abundance of cutting material all summer and fall. Given a place in the sun, they are perfectly hardy anywhere and are indifferent to soil and moisture. Truly a foolproof plant.

- E. C. Buxton**—Clean sparkling white with fine yellow eye. **55c each; 3 for \$1.40; doz. \$5.00**
 - Perry's Variety**—A new greatly improved form of this popular cut flower having 2" to 3" daisy-like flowers of deep golden yellow all summer and fall. **45c each; 3 for \$1.15**
 - Moonlight**—A fine companion to the above, having soft, pale yellow flowers. **50c each; 3 for \$1.25**
- One each of the 3 Anthemis \$1.35



◀
ANEMONE
JAPONICA

▶
ANTHEMIS
MOONLIGHT
(Page 4)



ANEMONE (An-em'-on-ee) Japonica— Japanese Windflower

One of the most important of all hardy plants. Begins blooming in August and continues until cut down by frost. True aristocrats of the garden. Easiest culture. Perfectly hardy if given 3" of straw or leaves for winter protection. (See color cut on back cover.)

- alba**—Large snowy white, like a glorified narcissus. 60c each; 3 for \$1.65
 - Alice**—Glorious silvery pink double. 60c each; 3 for \$1.65
 - Queen Charlotte**—Very large semi-double LaFrance pink 3' 60c each; 3 for \$1.65
 - September Charm**—A beautiful new early bloomer. Flowers a lovely silvery pink shaded with rose and mauve. 2½'. 60c each; 3 for \$1.65
 - Whirlwind**—Large semi-double white. 3'. 60c each; 3 for \$1.65
- One each of the Japanese Anemones \$2.65

ANEMONE (Species)

- ***Hepatica acutiloba**—Dainty little flowers on 4" stems appearing in very early spring. Ornamental downy leaves coming after the flowers and persisting all season. 40c each; 3 for \$1.10
 - ***Hepatica triloba**—A little more dwarf than the above with rounded leaf lobes. Both are best in moist shade and leaf-mold. 40c each; 3 for \$1.10
 - ***hupehensis**—A Chinese sort blooming from early August until frost. Deep rose flowers 1½" in diameter. Profuse bloomer. 10". 60c each; 3 for \$1.55
 - ***nemerosa alba fl. pl.**—A very choice little woodlander. From creeping rootstocks come many lovely finely divided fern-like leaves and dainty double snow-white flowers like a tiny miniature Esther Reed Daisy. Given a moist spot in partial shade, it quickly forms a lovely little colony. 4". \$1.00 each; 3 for \$2.50
 - ***pulsatilla**—Large crocus-like purple flowers in April, followed by fluffy seed plumes. The downy fern-like leaves appear after the flowers have passed and remain all season. 8". 40c each; 3 for \$1.10
 - ***pulsatilla rubra**—Deep wine-red form. 50c each; 3 for \$1.25
- One each of the Anemone Species \$3.10

ARABIS (A'-ra-bis)—Rock-Cress

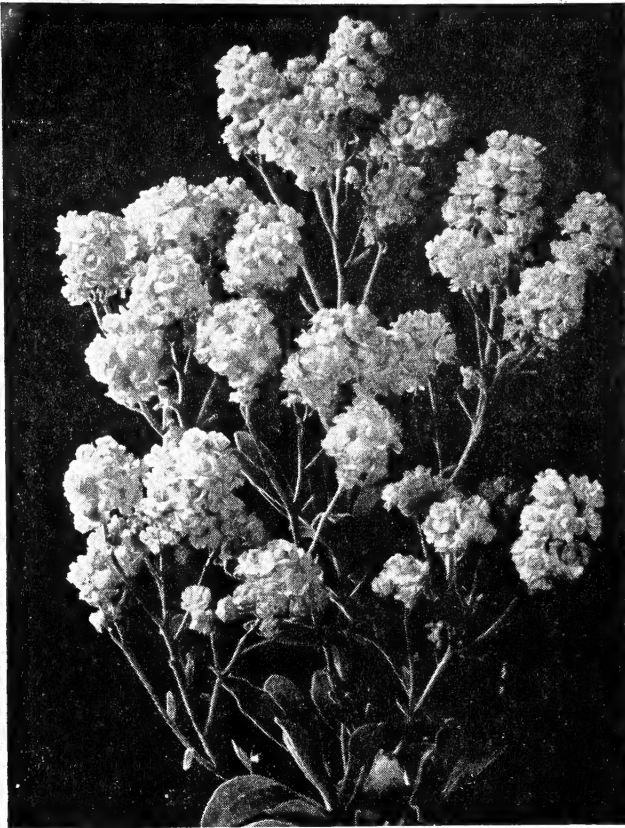
Very useful plants for carpeting dry walls or banks, forming broad mats of evergreen foliage fairly smothered under a profusion of bloom in early spring. This whole family seems to thrive on neglect.

- ***albida**—Earliest of all. Pure white 4". 40c each; 3 for \$1.10; doz. \$4.00
 - ***albida coccinea**—Bright rosy red flowers in great abundance. 50c each; 3 for \$1.25; doz. \$4.50
 - ***albida fl. pl.**—Charming double white form resembling a miniature double stock. Superb for cutting. 8". 50c each; 3 for \$1.25; doz. \$4.50
 - ***albida Rosabella**—Lovely rose pink form. 50c each; 3 for \$1.25; doz. \$4.50
 - ***albida variegata**—Very distinct, having a broad margin of creamy white around each finely notched leaf. Compact grower. White flowers. 45c each; 3 for \$1.15; doz. \$4.25
- One each of the 5 Arabis \$2.15

AQUILEGIA (Ak-wi-leej'-i-a)—Columbine

Most useful in moist partially shaded spots but equally good in full sun.

- ***alpina blue**—Dwarf form. 40c each; 3 for \$1.10; doz. \$4.00
 - ***Cap de Rosiers**—A stunning alpine novelty. Very double bright pink flowers on 8" stems. An extremely rare specimen. \$1.00 each
 - chrysantha**—Light chrome-yellow. Very fine. 40c each; 3 for \$1.10; doz. \$4.00
 - chrysantha, Silver Queen**—Long-spurred silvery white. Fine. 40c each; 3 for \$1.10; doz. \$4.00
 - clematiflora**—Lovely, spurless, clematis-like blooms. 40c each; 3 for \$1.10
 - Crimson Star**—Huge red. 40c each; 3 for \$1.10; doz. \$4.00
 - Dobbies' Mixed Hybrids**. 40c each; 3 for \$1.10; doz. \$4.00
 - eximia**—Fall blooming red. 65c each; 3 for \$1.65
 - ***flabella alba**—Immense pure white, short spurred flowers on 6" plants. Fine. 50c each; 3 for \$1.25; doz. \$4.50
 - longissima**—Greatly elongated spurs. Flowers soft yellow. 50c each; 3 for \$1.25
 - longissima hybrids**—New mixed. 40c each; 3 for \$1.10
 - Long spurred pink shades**. 40c each; 3 for \$1.10; doz. \$4.00
 - Long spurred purple shades**. 40c each; 3 for \$1.10; doz. \$4.00
 - Mrs. Nichols**—The finest long spurred blue we have found. Extra large, bold flowers of deep blue with white corolla. 50c each; 3 for \$1.25; doz. \$4.50
- One each of the 14 Aquilegias \$6.25



➤
ASTER
FRIKARTI
JUNGFRAU

◀
ALYSSUM
SAXATILE
FLORE-PLENO



ALYSSUM (Al-is'-um)—Madwort

Absolutely indispensable for the rockery and alpine garden. The evergreen foliage is good the year around and its silvery color furnishes fine contrast. When in bloom they form bold masses of color. No group of plants gives more color and asks less care than this fine family. Plant in full sun.

- ***citrinum**—Similar to saxatile, but a lovely, citron-yellow. A distinctly beautiful variation. 40c each; 3 for \$1.10
 - ***saxatile compactum (Basket of Gold)**—Glorious masses of brilliant golden yellow flowers, extremely fragrant. Plant with Arabis, Dwarf Phlox, and Aubrietia for best effect. 40c each; 3 for \$1.10
 - ***saxatile fl. pl.**—The fully double flowers accentuate the richness of the golden yellow color. Makes no seed. May to October. 65c each; 3 for \$1.75
 - ***spinosum roseum**—Dense spiny, silvery foliage on woody stems and many small airy pink flowers during June and July. Very choice. 65c each; 3 for \$1.75
 - ***spinosum album**—Lovely white form of above. 50c each; 3 for \$1.25
- One each of the 5 Alyssums \$2.45

ASTERS—Dumosa Hybrids

These new dwarf asters are invaluable for the rock garden as they come in the late summer and fall when color in the rockery is the hardest to maintain. They are perfectly hardy and grow with very little water, making symmetrical little mounds of color 8" to 10" in height. One of the most valuable additions to rock plants in recent years.

- ***Blue Bouquet**—Exquisite china blue. 40c each; 3 for \$1.10; doz. \$4.00
 - ***Constance**—Charming bright pink. 40c each; 3 for \$1.10
 - ***Lilac Time**—Deep violet-blue. 40c each; 3 for \$1.10
 - ***Little Red Boy**—The first red in this fine group of dwarf Asters, carrying the same brilliant coloring as Beechwood Beacon. 55c each; 3 for \$1.40
 - ***Niobe**—Pure snow white. 40c each; 3 for \$1.10
 - ***Purple Feather**—Superb new deep purple. 50c each; 3 for \$1.25
 - ***Violet Beauty**—Fine extra large flowered violet. 50c each; 3 for \$1.25
- One each of the 7 Dwarf Asters \$2.95

ASTER (Hardy)—Michaelmas-Daisy

Easiest of fall blooming perennials supplying color to the border and cut-flower material from August till frost. Grow in full sun in rich moist soil.

Novae-belgi—Bushy spreading type

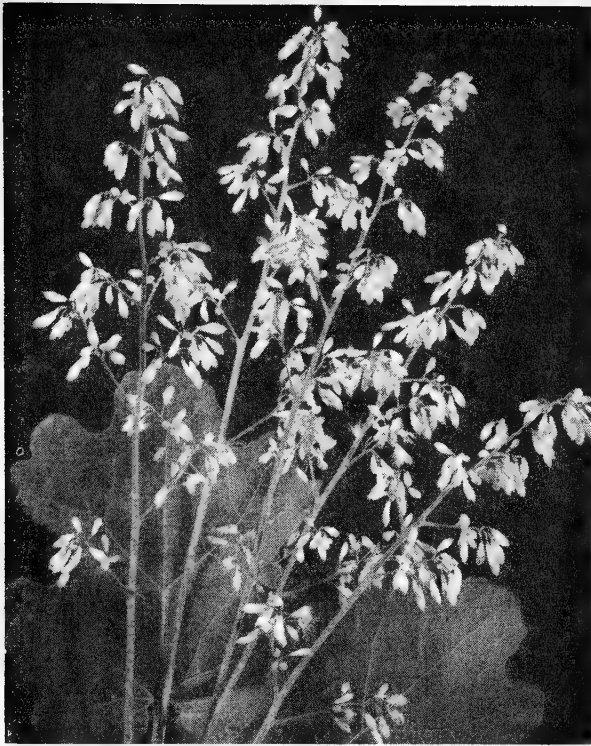
- Beechwood Beacon**—Deep crimson. 50c each; 3 for \$1.25
 - Gayborder Blue**—Bright sky blue. Vigorous and prolific. 40c each; 3 for \$1.10
 - Lavender Giant**—New huge lavender. 50c each; 3 for \$1.25
 - Palmyra**—Immense orchid-pink. 40c each; 3 for \$1.10
 - Queen Mary**—Forms a large bushy plant 4' tall with gracefully branching stems having 2½" flowers of particularly lovely porcelain blue. Nothing else can take the place of this one. 40c each; 3 for \$1.10; doz. \$4.10
 - Violetta**—The very finest deep blue aster yet introduced. The unusually large florets are produced in such profusion as to nearly hide the foliage. Very strong grower attaining a height of 5' and nearly as broad. 55c each; 3 for \$1.35; doz. \$4.75
 - Mt. Everest**—Clouds of large pure white flowers on strong 5' bushes. 40c each; 3 for \$1.10; doz. \$3.50
- One each of the above Asters \$2.85

Novae-angliae—Permanent slow-spreading. 5'.

- Harrington's Adorable**—Superlative new large, pure pink. 50c each; 3 for \$1.25
 - Mrs. Fitzpatrick**—Bright rosy-red. 50c each; 3 for \$1.25
 - Mt. Rainier**—Pure white. 45c each; 3 for \$1.15
 - novae angliae**—Rich purple. 40c each; 3 for \$1.10
 - Survivor**—Bright rose-pink. 65c each; 3 for \$1.85
- One each of the above Asters \$2.15

ASTERS—Species and Hybrids

- amellus, King George**—Immense individual florets in huge heads. Rich, deep blue on sturdy 2' plants in August. 75c each; 3 for \$2.00
- frikarti or Wonder of Stafa**—One of the most constant blooming plants in existence. Huge clear lavender blue daisies of inestimable value for cutting. 55c each; 3 for \$1.35
- frikarti, Jungfrau**—Deep dark blue flowers on compact bushes 2' tall. Fills a very real need of blue cutting material in August. 85c each; 3 for \$2.15



BOCCONIA CORDATA

ASTER ALPINUS—Dwarf Spring Flowering

Distinct woody little evergreen shrubs justly popular for wall or border in sun or partial shade.

***Goliath**—Mammoth lilac daisies. 40c each; 3 for \$1.10

GIANT FLOWERED ENGLISH ASTERS

This new race of Giant Flowered Asters is far ahead of all forms previously offered. They are larger and more double as well as being a distinct improvement in coloring. They form strong well branched bushes 4' tall, giving a wealth of bloom in September. Excellent cut flowers lasting well in water. Full sun.

Blondie—New double pearly white of exceptional size and substance. 75c each; 3 for \$2.00

Cardinal—A new shade of vivid deep fuchsia red. A spectacular flower. 75c each; 3 for \$2.00

Peace—A glorious new shade of lavender rose. Very large and double. Exquisite. 75c each; 3 for \$2.00

Plenty—The cleanest, finest clear blue of any Aster we have seen. Very double and huge in size. 75c each; 3 for \$2.00; doz. \$7.50

Prosperity—Very fine deep rose red. Excellent garden effect. 75c each; 3 for \$2.00

One each of the 5 Giant English Asters \$3.35; 3 each \$9.50

BERGENIA (Ber-jee'nee-uh)

See Saxifraga Megasea

BUDDLEIA (Bud'lee-a)—Butterfly Bush

See Flowering Shrub List.

BAPTISIA (Bap-tis'-i-a)—False Indigo

australis—Attractive and useful border plant for full sun. Handsome locust-shaped leaves and deep indigo blue pea-shaped flowers in late May. 4'. 40c each; 3 for \$1.10; doz. \$4.00

BOCCONIA (Bok-koh'-ni-a)—Plume Poppy

cordata—A noble plant for the sunny border or shrub planting having beautifully cut glaucous leaves and filmy heads of creamy flowers followed by ornamental seed plumes. 8' 45c each; 3 for \$1.15

CARNATION (Kar-nay'-shun)—Hardy Sorts

Popular hardy, everblooming sorts for a rich well-drained spot in the sun.

Dawn—Lovely pink.

Golden Sun—Fine yellow.

King of the Blacks—Intense black-crimson.

Prof. Malmgreen—Brilliant vermilion.

Red Prince—Ruby red.

Snowbird—Pure white.

40c each; 3 for \$1.10; doz. \$4.00
One each of the 6 Carnations \$2.15

CATANANCHE (Ka-ta-nan'-ke)—Love Plant

***caerulea**—Dainty flowers of powder blue with deep blue eye on slender naked 15" stems. Profuse bloomer and excellent cut flower. 50c each; 3 for \$1.25; doz. \$4.50

CAMPANULA (Kam-pan'-eu-la)—Bellflower

We are continually asked what can be used to give color to borders and rock gardens during the summer months and we always think first of Campanulas. This huge family ranges from tiny bells on 2" stems to tall and stately border plants. No gardener should overlook this group of long flowering perennials.

Dwarf Types

***carpatica**—Very large, widely open blue bells on 8" wiry stems all summer. 40c each; 3 for \$1.10; doz. \$4.00

***carpatica alba**—White form of the above.

40c each; 3 for \$1.10; doz. \$4.00

***carpatica, Blue Carpet**—Fine new form of deeper blue, a little dwarfer and more compact than type. 50c each; 3 for \$1.25

***cochlearifolia (pusilla)**—Dainty, nodding bells of soft lavender over mats of deep green. 45c each; 3 for \$1.15

***cochlearifolia alba**—Glorious snow white form of the above. 45c each; 3 for \$1.20

***cochlearifolia Miranda Lohbrunner Form**—A little deeper shade of blue with dark stems. A glorious new form of striking beauty. 50c each; 3 for \$1.25

***garganica**—Compact rosettes of shiny foliage. Star-like blue flowers with a white eye. Very choice. True form from cuttings. 55c each; 3 for \$1.35; doz. \$4.85

***isophylla alba (Star of Bethlehem)**—A beautiful trailing plant with large white saucer-shaped flowers. 50c each; 3 for \$1.25; doz. \$4.50

***Mrs. G. F. Wilson**—A lovely hybrid with intense deep purple bells nodding gaily on wiry 4" stems. Very fine. 75c each; 3 for \$2.00

***muralis (Syn. portenschlagiana)**—Dense tufts of dark green foliage covered with blue bell-shaped flowers continuously from June till frost. One of the very best. True stock. 45c each; 3 for \$1.15; doz. \$4.25

***rotundifolia Olympicum (Blue Bells of Scotland)**—Blooms all summer on 8" stems. 40c each; 3 for \$1.10; doz. \$4.00

***turbinata**—Very large cup-like, erect flowers of violet blue on 4" stem. Striking plant. 55c each; 3 for \$1.35; doz. \$4.85

One each of the 12 Dwarf Campanulas \$5.45

CAMPANULA PERSICIFOLIA—Peach-leaved

This type grows from 3 to 4' tall and furnishes masses of color in the border all of July and August when color is most needed.

Blue Gardenia—Exquisite very double deep blue.

Misty Morn—Glorious double powder blue.

Orchid Beauty—A new color break with handsome single bells of soft orchid.

Telham Beauty—Mammoth single bluebell.

White Pearl—Double pure white.

50c each; 3 of One Kind \$1.25
One each of the 5 Campanulas \$2.25

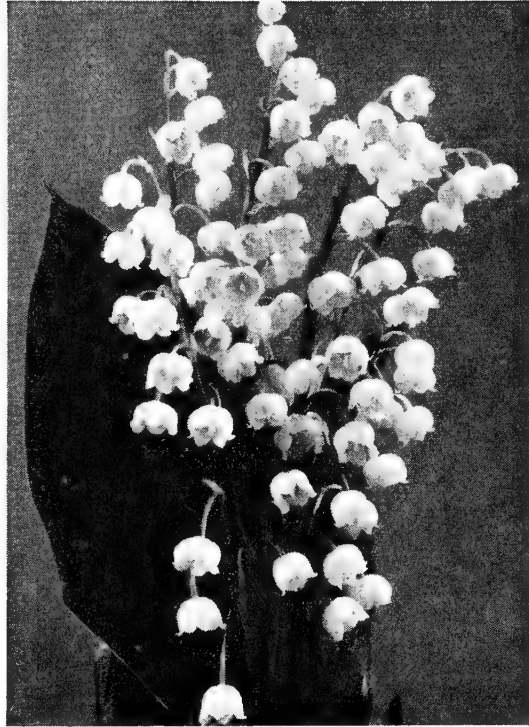
CAMPANULA MEDIUM—Canterbury Bells

Calycanthema (Cup and Saucer)—Separate colors, blue, white, and rose. 3 of one color 50c; doz. \$1.75

1 each of 3 colors 65c; 4 each of 3 colors \$2.25



CYPRIDEDIUM REGINA



CONVALLARIA MAJALIS



CHRYSANTHEMUM SNOWBALL

CARYOPTERIS (Ka-ri-op'-ter-is)—Blue Spirea

Blue Mist—This perfectly hardy form of Caryopteris supplies a badly felt need for blue flowers during August and September. While suitable for the shrub border, it is equally suitable for the perennial border where the myriad heads of power-blue, fragrant flowers are more than welcome during the season when bloom is at the low tide.

65c each; 3 for \$1.65; doz. \$6.50

CALCEOLARIA (Kal-see-oh-lair'-i-a)—Slipperwort

The hardy calceolarias are among the choicest of all garden subjects, blooming during the hottest part of summer when flowers are scarce. In the fern bed or among other shade loving plants they are quite at home.

***John Innes**—Large golden slippers minutely speckled with red. One friend remarked, "How can anything so delicately beautiful be hardy?" and the strange thing is, that they actually are hardy.

85c each; 3 for \$2.25

COREOPSIS (Kor-e-op'-sis)—Tickseed

grandiflora, Sunburst—Brilliant double yellow Daisies on 24" stems blooming continuously. One of the very best cut flowers.

40c each; 3 for \$1.10; doz. \$4.00

CONVALLARIA (Kon-val-lair'-i-a)—Lily-of-the-Valley

***majalis**—Greatly beloved for its dainty, fragrant, waxy white bells. In combination with Phlox canadensis, it forms an exquisite table decoration. Likes some shade and moisture.

6 pips 55c; doz. \$1.00; 100 \$6.50

***majalis fl. pl.**—An extremely rare variety with every bell beautifully doubled, intensifying the pure waxen beauty of this universal favorite.

\$1.00 each; 3 for \$2.50; doz. \$9.50

***majalis rosea**—This glorious new Lily of the Valley is identical in every respect with the well known white form except in color which is a lovely soft pink. Increases rapidly in that difficult shaded spot. Deliciously fragrant, with all the airy grace of the genus. Make enviable corsages and dainty arrangements.

3 for \$2.00; 6 for \$3.50; 12 for \$6.00; 25 for \$11.00
6 Single White, 1 Double White, 3 Pink \$3.35

CYPRIDEDIUM (Si-pri-pee'-di-um)—Lady's Slipper

Hardy orchids that thrive in a moist woodsy soil in a shady spot. Large moccasin-shaped flowers. While the plants will disappear during dry weather, the roots must never be allowed to dry out or they will not survive for another year.

***pubescens**—Large yellow orchids with several blooms to the stem.

55c each; 3 for \$1.45

***regina (spectabile)**—The queen of hardy orchids. Huge pink and white blooms.

55c each; 3 for \$1.45

One each of the 2 Hardy Orchids \$1.00; 3 each \$2.80

CHICORIUM (Chick-or'-i-um)—Chickory

intybus—Free flowering border plant of easiest culture blooming all season with large double flowers of pleasing soft pink on 3' bushes.

50c each; 3 for \$1.25

CLEMATIS (Klem'-a-tis)—Shrubby Clematis

The following are herbaceous sorts coming from the ground each season and forming compact bushes. All are excellent subjects for the hardy border.

Davidiana—Bright green foliage and tubular, bell-shaped fragrant blue flowers.

55c each; 3 for \$1.35

integrifolia coerulea—Interesting large deep blue flowers with twisted petals from June to August.

55c each; 3 for \$1.35

One each of the 2 Clematis \$1.00; 3 for \$2.75

CHRYSANTHEMUM LEUCANTHEMUM

White Swan—Also known as the Memorial Day Daisy as it is always ready at this season. The flowers are perfectly double resembling a double Pyrethrum in form but considerably larger. Indispensable for cutting.

40c each; 3 for \$1.10; doz. \$4.10

CHRYSANTHEMUM—Turfing Daisy

tchihatchewii—A most valuable plant for covering bare spots. Dainty white daisies and prostrate finely cut foliage. A very rapid creeper, evergreen and permanent.

40c each; 3 for \$1.10; doz. \$4.00



CHRYSANTHEMUM DUKE OF WINDSOR



CHRYSANTHEMUM MRS. T. RILEY (Page 10)

HARDY GARDEN CHRYSANTHEMUMS

CHRYSANTHEMUM (Kris-an'-the-mum)

Chrysanthemums have no equal as cut flowers. The early sorts will give good blooms by the first of July and by a judicious choice of types you may have bloom until actual freezing weather. Many sorts are impervious to light frosts. Give plenty of moisture in full sun and fertilize heavily. Three or 4 inches of barnyard manure should be spaded into the soil before planting is done. A teaspoonful of bone meal and another of superphosphate may be put in the bottom of the hole when plant is set out. A monthly feeding of some good commercial fertilizer will give exhibition blooms.

WINTER PROTECTION—The best winter protection is nature's own. In other words their own tops. Never cut the old plants down in the fall. If further protection is desired use excelsior or evergreen boughs. Never use leaves, straw or other material that will smother the young new growth.

NEW EARLY FLOWERING ENGLISH CHRYSANTHEMUMS

If disbudded these new sorts will make flowers from 5" to 6" across. If not disbudded the blooms will be larger than any other garden varieties. They also have the habit of early blooming which makes them doubly valuable for garden use.

- Alabaster**—Very early white. 5" incurved blossoms. **50c each; 3 for \$1.25**
- Amber Utopia**—Lovely golden amber. Very early and prolific. August. **50c each; 3 for \$1.25**
- Betty Ferguson**—Enormous blooms of salmon and gold freely produced in early September. 30". **85c each; 3 for \$2.25**
- Bronze Supreme**—Vigorous tall growing. Strongly incurved petals of golden yellow showing a reverse of rich reddish bronze. August. **50c each; 3 for \$1.25**
- Caribou Rose**—Huge shaggy flowers of deep rose beautifully twisted and pointed. Early, prolific. **75c each; 3 for \$2.00**
- Conqueror**—Unusually large deep glowing red. **75c each**
- Corona**—Grand blooms of bright orange-amber. Broad petaled and long stemmed. **55c each; 3 for \$1.35**
- Cranford Cream**—A new soft cream. Large, well-formed. An exquisite cut flower. **50c each**
- Crimson Buttercup**—Huge fluffy flowers on 5' stalks. Red stained with rust. August. **50c each; 3 for \$1.25**
- Crusader**—Thick, leathery petals of pure ivory tipped with pink. Large, incurving, and very early. Perfect performer. August. **\$1.00 each**
- Daily Express**—A grand large flower of deep terracotta overlaid with Indian red. Weatherproof. Sept. **75c each**
- Duke of Windsor**—Rich, glowing purple-violet. Huge incurving blooms of absolute perfection. When disbudded will rival the indoor Mums. **\$1.00 each; 3 for \$2.50**

- Egypt**—From the middle of August to frost this 2' plant is covered with immense solid blooms of deep reddish bronze. **65c each; 3 for \$1.75**
- George McLeod**—Very large incurved. The big fluffy blooms are a bright pure golden yellow. September. 4'. **65c each; 3 for \$1.75**
- Golden Security**—Enormous incurved flowers of deep golden orange. September. 2'. **55c each; 3 for \$1.35**
- Gold Standard**—Immense golden yellow incurved, usually the first to flower. August. **50c each; 3 for \$1.25**
- Gwen Massie**—Large flat, spiky blooms of bright rose and copper. A distinctive novelty. September. 3'. **\$1.25 each**
- H. Sutcliffe**—Immense incurved blooms of soft clear yellow. September. **75c each; 3 for \$2.00**
- Illuminous**—Deep wine colored with incurving petals showing a lovely chamois reverse. **\$1.00 each**
- Ivory Queen**—Very large flat blooms of glistening ivory-white. Disbuds well. September. **\$1.00 each; 3 for \$2.50**
- Kate Summerville**—A new giant with fawn colored flowers stained old rose. Starts blooming August 1st with 7" fully incurved flowers. Disbud. **\$1.50 each**
- Leda**—Large heliotrope pink. August. **50c each**
- Mary Sutherland**—One visitor exclaimed, "It looks like a piece of calico", which was really very good. The petals are rosy purple, edged with white. Large flowered, fully double, incurved, blooming in August. 4'. **\$1.00 each; 3 for \$2.50**
- Modesty**—Dainty apple-blossom pink. Fully double and most satisfactory. September. **65c each**
- Mr. E. Crosley**—An improved Crimson Buttercup with deeper colored, more double flowers. **85c each; 3 for \$2.25**



CHRYSANTHEMUM
ZENITH
Page 9

FAVORITE CUT FLOWER CHRYSANTHEMUMS

Outstanding varieties for cutting because of extra early flowering, freedom of bloom and long lasting qualities. Not new but tried and proven.

- Avalanche**—Glorious double white with creamy heart. Large and very early. **45c each**
- Bonfire**—Masses of fiery red. Fully double blooms. **40c each**
- Crimson Sheen**—Deep rich red. Velvety sheen. **45c each**
- Chippewa**—Wonderful mulberry purple from Minnesota. **50c each**
- Chris Columbus**—An outstanding new plant that attracts much attention. Very double creamy flowers in immense sprays with bright, pleasing outer rim of pink as the flower ages. **60c each; 3 for \$1.35**
- Deana**—Unique salmon buff and bronze button. August. **45c each**
- Geronimo**—Skilfully blended rose and orange. Very early. **50c each**
- Glory of Seven Oakes**—An old favorite. Clear bright yellow double. **35c each**
- Haldoona**—The very finest mahogany and gold. Huge fluffy flowers. August 1st. **50c each; 3 for \$1.25**
- Judith Anderson**—Brilliant golden yellow button. September. **35c each**
- Pohatcong**—Most appealing shade of clear bright pink. Very double and early. **35c each**
- Rosita**—New early flowering bright pink button. Do try this one. September. 2½' **60c each**

Sept. Dawn—Exquisite large aster shaped deep rose. Everyone admires this one. 2'. **45c each; 3 for \$1.15**
One each of the above (value \$5.95) \$5.25

CHRYSANTHEMUM—Dwarf Summer Blooming

***Amelia or Cushion Type**—"Four months of blazing beauty," says one writer. This is really no exaggeration. The plants are 10" tall and 15" across and bloom with such abandon as to defy description from the first of July to the end of October. All fully double. Frequently referred to as azaleamums.

- Achievement**—Deep bronze and rusty rose.
- Ann Miller**—Warm glowing red.
- Apricot**—An appealing apricot shade.
- Bronze Cushion**—Rich coppery bronze.
- Dahlia Flowered Cushion**—Like a miniature Cactus Dahlia. Deep wine purple.
- Gold Cushion**—This is the new de luxe yellow that has supplanted all others.
- Goldilocks (Zantha)**—A new perpetual blooming bright canary yellow with ball shaped flowers. Outstandingly good.
- Pink Cushion**—Clear glistening pink.
- Pomponette**—Unusually compact, free flowering, yellow.
- Red Cushion**—Fine mahogany red.
- White Gull**—Dainty little ball-shaped blooms of purest white but showing a tinge of pink in the bud. **40c each; 3 of one kind \$1.10**
One each of the 11 sorts \$4.15; 3 for \$11.50

KOREAN HYBRIDS—Daisy-like Forms

These single and semi-double forms are very popular for cutting and flower arrangements. Most of them are also very sweetly scented.

- Hebe**—Delightfully fragrant, luminous pink blossoms in lavish profusion. September 1. Single.
- Meteor**—Superb new velvety red. One of the very best deep reds so far. Semi-double. September.
- North Star**—Glorious new hardy pure white duplex.
- Sappho**—Lovely single bright yellow. July to October.
- Sunred**—A very early duplex that is even more free blooming than the type. Indian red. September. 4'.
- Venus**—A vivid glittering tone of deep rhodanthe pink. September. Single. **40c each; 3 of one kind \$1.10**
One each of the 6 sorts \$2.10; 3 for \$5.50

Mrs. J. Smeardon—One of the very finest and certainly one of the earliest of all large flowered Chrysanthemums. 6" flowers of old rose with a soft gold reverse, beautifully incurved. Very fine disbudded. **\$1.00 each; 3 for \$2.50**

Mrs. T. Guthrie—Chestnut red with bronze reverse. One of the earliest and surely one of the largest. Often 7" when disbudded. **50c each; 3 for \$1.25**

Mrs. T. Riley—Huge silken white, making 7" blooms when disbudded. Very broad petaled, high built flower, slightly reflexed. **\$1.50 each; 3 for \$4.00**

Mrs. Weber—One of the finest and earliest. Deep old rose of exceptional size and substance. **50c each**

Quaker Maid—Deep chestnut-red with golden reverse. The outer petals reflex and the inner incurve. An immense solid bloom of real quality. August. 2'. (See color cut on back cover.) **\$1.50 each**

Reveller—Perhaps the brightest red due to the unbelievable number of flowers to the stalk. A real beauty. August. **50c each; 3 for \$1.25**

Sheila Page—Stiff pointed petals of velvety crimson forming large full blooms of wonderful substance. **\$1.00 each**

Snowfall—Glorious double ball-shaped flowers in great clusters. Blooms from August to frost. 3'. **65c each; 3 for \$1.60**

Utopia—Fine coppery bronze. Profuse and early. **50c each**

Yellow Gown—Immense spiky blooms of clear gold. Very strong grower. Prolific bloomer. August. 4'. **65c each; 3 for \$1.60**

Zenith—In August these sturdy bushy plants are a blaze of bright manganese violet-purple. Nothing else even approaches it in color. Large compact blooms. **\$1.50 each; 3 for \$3.75**

One each of 36 English varieties (value \$28.80) **\$25.00**

THE NOVEL SPOON CHRYSANTHEMUMS

Distinct and attractive type of recent introduction. Petals quilled, flattening at tips. Large and perfectly formed.

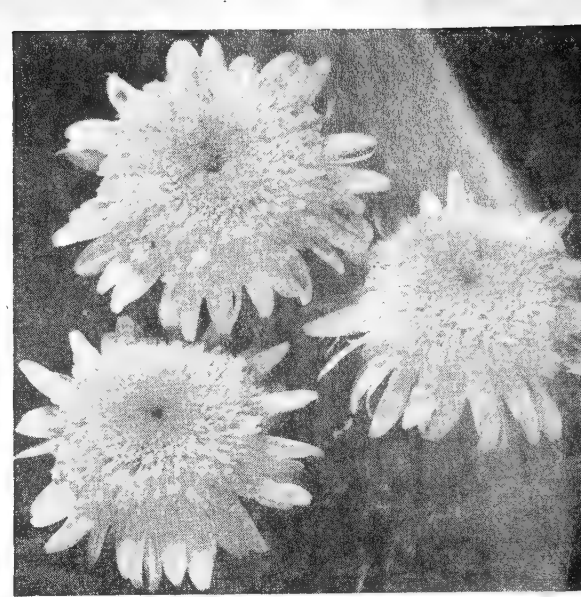
- Golden Spoon**—Clear gold toned.
- Jasper Spoon**—Brilliant gold tube ending in bright red spoon.
- Magenta Spoon**—New deep magenta rose.
- Orchid Spoon**—Clear orchid shade.
- Pink Spoon, Improved**—Fine clear pink.
- Red Spoon**—New deep red.
- Silver Spoon**—Pure silvery white blooming in August.
- White Spoon**—Large pure white.
- Yellow Spoon**—Glorious chrome yellow. **45c each; 3 of one kind \$1.25**
One each of the 9 spoons \$3.50; 3 for \$8.75



CHRYSANTHEMUM MAXIMUM
PHYLIS ELLIOTT



CHRYSANTHEMUM MAXIMUM
ESTHER REED



CHRYSANTHEMUM MAXIMUM MT. SHASTA

FINEST DOUBLE KOREANS

This race of hardy chrysanthemums is especially welcome in the colder regions because of their early blooming character and extreme hardiness. They are wonderfully profuse bloomers and come in an endless array of pastel shades which defy accurate description. As a cut flower they simply have no superior and in the garden their gay colors delight us long after everything else has been destroyed by frost.

Burgundy—Intense rich cerise-crimson. One of the best.

Eugene A. Wander—Brilliant, glistening golden yellow.

Lavender Lady—Finest pure lavender.

Magnolia—Lovely soft chamois-pink.

Mrs. P. S. Dupont—Soft peach tinted salmon and buff.

Red Velvet—A glorious new crimson. Fully double and a grand early bloomer.

Romany—Carmine-red with bronze undertone.

40c each; 3 of one kind \$1.10

One of each of the 7 sorts \$2.65; 3 for \$7.50

NEW ENGLISH LILLIPUT CHRYSANTHEMUMS

A recent importation of fine compact habit. The bushes grow only about 10" tall and 15" to 18" across. They are completely covered with blooms which seem impervious to rain and even snow. Very early flowering and a most persistent bloomer.

***Bashful**—Perfectly formed flowers of soft orange copper and bronze.

***Doc**—Lovely mounds of clear rose pink. 2" flowers. Greatly admired.

***Emu**—Very early rose-red flowers about 1½" in diameter completely cover the compact plants.

***Happy**—Perfectly formed 2" flowers. Very double and pure gold in color.

***Pheasant**—Lovely strawberry-pink flowers showing coppery tints with age. Perfect mounds of 1½" flowers.

***Redbreast**—Brilliant Indian red with tints of gold, forming a mass of gorgeous color.

85c each; 3 of one kind \$2.15

One each of the 6 Lilliputs \$4.75

RAYONANTE CHRYSANTHEMUMS

An exotic oriental type of flower, very large and double with pointed or quilled petals. Vigorous, sturdy growers forming neat bushes 3' tall. October.

Bronze Rayonante—Soft bronze-buff. 75c each

Pink Rayonante—Lovely orchid-pink. 75c each

Salmon Rayonante—Bright salmon pink. 75c each

White Rayonante—Pure snowy white. 75c each

Yellow Rayonante—Glorious pure yellow. 75c each

One each of the 5 Rayonantes \$3.50

CASCADE CHRYSANTHEMUMS

A lovely trailing type for banks or for planting in pots to trail from walls, trees, or porches.

Bridal Veil—Snowy white.

Cherry Rose—Fine rose-pink.

Firefall—Bright garnet-red

Purple Queen—Purple anemone.

Royalty—Lovely clear lavender.

50c each; 3 of one kind \$1.25

One each of the 5 for \$2.35

SPIDER CHRYSANTHEMUMS

Lovely spidery or thread-like flowers. Large and exotic blooms coming in early November.

Agnes—Striking orchid pink.

Bunbu—Magnificent quilled flowers of soft orchid.

Butterfly—Long spidery petaled sort of canary yellow.

Georgina Hedinger—Distinctive spidery blooms of clear pink.

Lorraine—An outstanding bright yellow.

Mamoru—Brilliant orange and bronze.

Marsha—The finest pure white spider type.

Silver Drops—Another fine white with quilled petals ending in an incurved fishhook effect.

75c each; 3 of one kind \$2.00

One each of the above 8 Spiders \$4.95

CHRYSANTHEMUM MAXIMUM—Shasta Daisy

The well-beloved Shasta Daisy of the older gardens has become a great favorite in its newer forms, which, while improved in size of flower and number of petals, is still as hardy and easy of culture as the original. Any good garden soil in the sun with reasonable moisture is all it asks.

Esther Reed—Very large fully double flowers with a high crested center. If kept cut this will bloom continuously all season. Unsurpassed as a cut flower. 18".

50c each; 3 for \$1.25; doz. \$4.50

G. Marconi—The largest double with 7" blooms on 30" stems. These are very double with long frilled petals making an enormous fluffy flower. 65c each; 3 for \$1.65; doz. \$6.00

Mt. Shasta—Considered by many as the best double Shasta. This is similar to Esther Reed but grows 24" tall. Blooms continuously on strong unbranched stems.

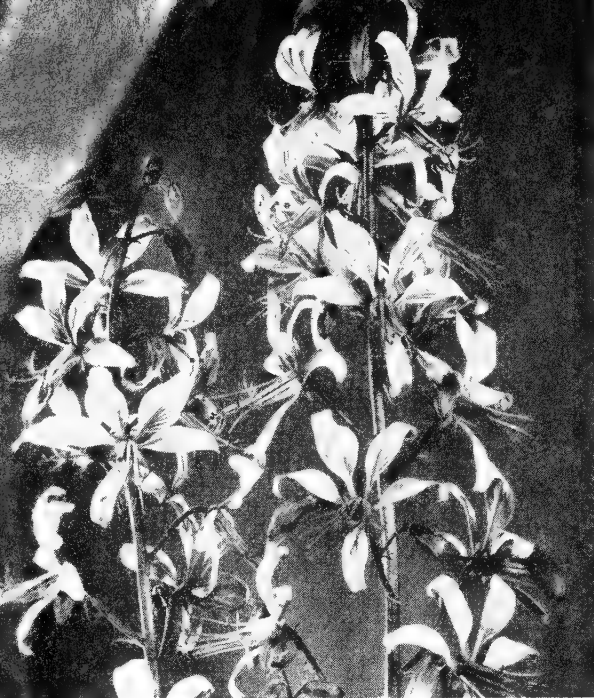
55c each; 3 for \$1.35; doz. \$4.75

Phyllis Elliott—Daintily frilled petals, flared and lacinated at the tips, give this an exquisite airiness. Superb cutting material. 50c each; 3 for \$1.25; doz. \$4.50

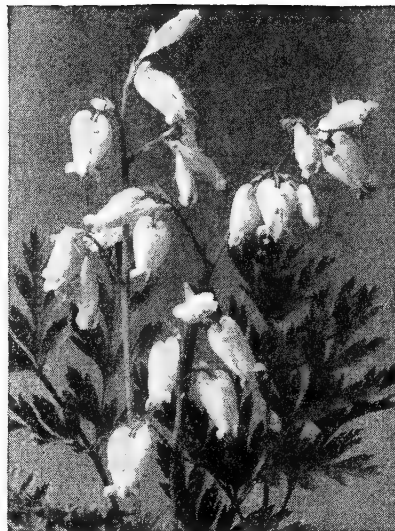
Snow Queen—A fine new giant flowered sort with splendid broad petaled blooms on sturdy 3' stems all season.

75c each; 3 for \$2.00

One each of the Shasta Daisies \$2.65; 3 each \$7.50



DICTAMNUS



DICENTRA (BLEEDING HEART)



DRYAS OCTOPETALA

DICTAMNUS (Dic-tam'-nus)—Gas Plant

An interesting perennial that, when once established, will last a life-time. Handsome ash-like leaves of delightful fragrance and lovely flowers which form a gas that may be ignited on hot evenings without damage to the plant. Should have a sunny, well drained position.

albus ruber—Forms an attractive bush 2½' tall having spikes of rosy pink flowers with deeper veinings during July. One may expect a life-time of pleasure from this plant.

75c each; 3 for \$2.00; doz. \$7.25

albus—A splendid pure white form.

75c each; 3 for \$2.00; doz. \$7.25

One each of the above \$1.35

DICENTRA (Di-sen'-tra)—Bleeding Heart

Moisture loving but equally good in sun or full shade.

***eximia**—15" everblooming. 40c each; 3 for \$1.10

***oregona rosea**—One of the rarest in cultivation. Soft grey foliage and large pale pink blooms. \$1.00 each

***formosa, Sweetheart**—A pure white form blooming continuously from May to October. 75c each; 3 for \$2.00

spectabile—Common Bleeding Heart. 75c each; 3 for \$2.00; doz. \$7.25

One each of the Dicentras \$2.65

DAPHNE (Daf'-ne)—Garlandflower

***cneorum**—Shrubby little evergreens for full sun or partial sun in rich, well drained soil. Although a true shrub, usually grown in the perennial border or rockery because of its compact habit. Strong young plants 60c each; 3 for \$1.55

Heavy 3-yr. plants \$1.75 each; 3 for \$4.75

DIGITALIS (Dij-i-tay'-lis)—Foxglove

Giant Shirley Hybrids—Immense flower spikes crowned with big bell-shaped blooms in a wide color range.

3 for 85c; doz. \$3.15

ambigua—A true perennial from Siberia having rich creamy yellow flowers penciled with brown. Dwarf and permanent. 2½'. 50c each; 3 for \$1.25; doz. \$4.50

DODECATHEON (Do-de-cay'-the-on)—

Shooting Star or Love Dart

Beautiful little native cyclamens loving shade and moisture but doing equally well in full sun if watered freely.

***media**—Largest form. White to pink. 12". 40c each; 3 for \$1.10

DRYAS (Dry'-as)—Mountain Avens

Beautiful prostrate evergreen shrubs having neat oak-like leaves, green above and white underneath. Should have a place in the sun with reasonable moisture.

***octopetala**—Large anemone-like solitary white flowers all summer. 55c each; 3 for \$1.40; doz. \$5.00

***Sundermani minor**—A very lovely form of more restrained habit. Flowers, however, are the same size.

65c each; 3 for \$1.65; doz. \$6.50

One each of the Dryas \$1.10

DIANTHUS (Di-an'-thus)—Pinks

The beloved Pinks of our Grandmothers' gardens have taken on many new forms and hues but have lost none of their popularity during the years. Given any good garden soil with reasonable moisture and they repay with carnation-like flowers in profusion.

***brevicaulis**—This may not be correctly named but is an outstanding plant. Above 1" cushions come countless, perfectly double tiny flowers of brilliant carmine. An enchanting acquisition that is very popular with our visitors. 85c each

***Dina Weller**—A new compact form with an incredible number of lovely pink flowers with broad center band of red. 8". 50c each; 3 for \$1.25

***knappi**—Yellow. 40c each; 3 for \$1.10

***Little Joe**—Deep crimson. 55c each; 3 for \$1.40

***neglectus**—Very small tufts with large salmon pink flowers on 3" stems. Rare and very lovely. 65c each; 3 for \$1.65

***Rose Cushion**—The finest foliated Dianthus grown, forming very compact close mats of rich blue-green. The leaves are so fine and thick as to remind one of woven fabric. Above this fine cushion come many bright pink flowers on 2" stems. The best rock pink grown. 45c each; 3 for \$1.15

***Sweet Memory**—A glorious new pink that is as near perfect in habit and form as a flower can be. Neat and compact, evergreen, perfectly hardy, indifferent to soil and above all perfectly formed double white flowers with maroon markings, with a calyx that does not split. 75c each; 3 for \$2.00

***Tiny Rubies**—Lovely cushions of deep foliage only 1" high, forming a perfect setting for tiny half-inch brilliant pink double flowers on naked 2" stems. This lovely hardy pink is among the very choicest of all dwarf plants. We cannot recommend it too highly. 55c each; 3 for \$1.40

***Unique Hybrid, Salmon Pink**—As the name implies this is a lovely shade of salmon pink. The flowers are fully double and borne freely all season. 12". 60c each

***Wallace Red**—Glorious new deep red. The flowers are double and make excellent cutting material all season. Very hardy and permanent. 12". 75c each

***White Reserve**—Like a fine double white Carnation with true mat forming habit. 10". 50c each; 3 for \$1.25

One each of the 11 Dianthus \$6.10

DELPHINIUM (Del-fin'-i-um)—Larkspur

Nothing surpasses the Delphinium for usefulness. Plant in full sun and fertilize heavily.

If blossom stalks are cut to the ground before seed is set they immediately send up new flowers.

Blue Mirror—Fine novelty of Chinese form with spurless bright gentian-blue flowers, exquisite for cutting.

50c each; 3 for \$1.25

cardinale—A brilliant red form that becomes dormant after flowering. The dry dormant roots appear lifeless but quickly throw up lovely blossom stalks when planted.

60c each; 3 for \$1.55

DELPHINIUM—Pacific Giants

Vetterle and Reinelt strain which is very mildew resistant. The flowers do not shatter and represent the very highest development in Delphiniums today.

While Delphiniums vary somewhat, our stock is grown from the introducers' seed and produce huge flowers of magnificent quality.

Black Knight Series—Huge florets of deep midnight-violet with heavy velvety texture. 50c each; 3 for \$1.25; doz. \$4.50

Blue Jay Series—Brilliant true medium blue with dark bee.

50c each; 3 for \$1.25; doz. \$4.50

Cameliard Series—Pure lavender self with white bee.

50c each; 3 for \$1.25; doz. \$4.50

Galahad Series—Enormous clear white blooms with heavy, glistening texture, white bee.

50c each; 3 for \$1.25; doz. \$4.50

Guinevere Series—Glorious light pink lavender self with contrasting bees.

50c each; 3 for \$1.25; doz. \$4.50

King Arthur Series—Brilliant royal violet with large white bee.

50c each; 3 for \$1.25; doz. \$4.50

Percival Series—Large glistening white flowers with contrasting black bee.

50c each; 3 for \$1.25; doz. \$4.50

Summer Skies Series—Clearest light blue with white bee.

50c each; 3 for \$1.25; doz. \$4.50

One each of the 8 Pacific Giants \$3.25; 3 each for \$9.60

Round Table Series—A complete color assortment covering all the above and many more. 40c each; 3 for \$1.10; doz. \$4.00



DELPHINIUM PACIFIC GIANTS

DORONICUM (Dor-on'-i-cum)—Leopard-bane

These glorified golden daisies are unrivalled for early spring flower decorations. Sun or light shade.

pardalianches, Bunch of Gold—Immense form growing to 4' with huge flowers. Will re-bloom if cut to the ground after flowering.

55c each; 3 for \$1.40; doz. \$5.00

***clusi**—Evergreen species. Pale yellow flowers.

40c each; 3 for \$1.10

cordifolium—Very dainty small yellow daisies on slender 18" stems.

50c each; 3 for \$1.25; doz. \$4.50

excelsum—Strong grower with medium sized blooms of golden yellow.

40c each; 3 for \$1.10

One each of the 4 Doronicums \$1.65

ERIOPHYLLUM (Er-i-of'-il-um)—Oregon Sunshine

lanatum—A superb plant for dry positions, coming from the slopes of southern Oregon and California. Ornate silvery foliage the year round and glittering yellow daisies on 12" stems in May.

45c each; 3 for \$1.15; doz. \$4.25

ERODIUM (Er-oh'-di-um)—Heron's Bill

Distant cousins of the Geranium family with fern-like basal leaves and gay flowers on naked stems all season. Sun or partial shade.

***chamaedryoides roseum**—Tufts of tiny glossy fern-like leaves on which nestle countless deep pink, red-veined flowers from March to November. 1".

85c each; 3 for \$2.15; doz. \$8.50

***chrysanthum**—Beautifully cut basal leaves of frosted silver and dainty sprays of large sulphur-yellow flowers. 6".

\$1.25 each

***manescavi**—Rose-purple flowers 2" across on sturdy 10" stems blooming continually.

55c each; 3 for \$1.40

One each of the 3 Erodiums \$2.50



DORONICUM

ERICA (Er'-i-ca)—Heather

The following Scotch Heather is perfectly hardy although few varieties survive in our rigid climate. These are low growing shrubs with densely arranged foliage on wiry stems. Beautiful in winter and spring with tiny bells and ornamental all summer because of the lovely foliage. Grow in sun or light shade in lime free soil with plenty of humus and moisture.

***carnea**—Spreading mats with dainty stems carrying innumerable ruddy-red bells in late winter and spring.

Strong 1-yr. plants 55c each; 3 for \$1.40; doz \$5.00
Fine 2-yr. plants 85c each; 3 for \$2.15; doz. \$8.50

***Sherwoodi**—A new very hardy Heather that is very prostrate in habit and forms a wide mat smothered with brilliant rose-red bloom as soon as the snow is gone.

85c each; 3 for \$2.15

EUPHORBIA (Eu-for'-bi-a)—Spurge

The value of this family lies in the showy colored bracts above the leafy stalks. Hardy and lasting perennials.

***myrsinites**—Trailing evergreen shrublets. Fat little branches of sea-foam blue and gay yellow flowers.

50c each; 3 for \$1.25; doz. \$4.50

FRITILLARIA (Frit-il-lair'-i-a)—Crown Imperial

imperialis aurora—Stately stalks crowned by huge drooping bells of orange scarlet which in turn are surmounted by pineapple-like tufts of leaves. Perfectly hardy and long-lived. One of the earliest things to bloom. Grow in full sun in any good garden soil. Plant bulbs in fall only, 6" deep.

75c each; 3 for \$2.00; doz. \$7.50

imperialis sulphurea—A rare and exotic form of clear canary yellow. Very lovely.

\$1.25 each; 3 for \$3.50

One each of the above \$1.85

FUNKIA (Funk'-ia)—Plaintain Lily

Hardy, herbaceous perennials with handsome tropical-appearing leaves and lily-like flowers. Any moist situation in sun or shade. Very effective planted in the shady border with ferns or waterside plantings, but does well in full sun.

***coerulea lanceolata**—Broad green leaves and violet blue flowers. 2'.

50c each; 3 for \$1.25; doz. \$4.50

***coerulea variegata**—Variegated form.

85c each; 3 for \$2.15

***glauca**—A fine Japanese species with large blue-green leaves and violet flowers.

60c each; 3 for \$1.55; doz. \$6.00

***lancifolia**—Slender lance-shaped leaves and lilac-blue flowers in September. Very profuse.

50c each; 3 for \$1.25; doz. \$4.50

***subcordata grandiflora**—Large, fragrant, pure white flowers from August to October.

55c each; 3 for \$1.35; doz. \$4.85

***subcordata minor**—A lovely miniature form of subcordata growing 6" tall. A group of this little gem is indeed a lovely thing. Very rare and scarce.

85c each; 3 for \$2.35

***Thomas Hogg**—A beautiful new sort having large rich deep green leaves beautifully margined with clear silver. Dainty lavender flowers in August.

75c each; 3 for \$2.10

***undulata variegata**—Creamy white leaves, marked with bright, light green and soft lilac flowers. Grow in shade to retain the white foliage.

50c each; 3 for \$1.25; doz. \$4.50

One each of the 8 Funkias \$4.85

FUCHSIA (Feu'-shi-ah)—Lady's Eardrops

magellanica—An interesting shrubby perennial that has proven entirely hardy here. The ruby-red pendant flowers are produced by the hundreds, flowering freely in light shade.

60c each; 3 for \$1.55

magellanica alba—Pure white form.

60c each; 3 for \$1.55

One each of the Fuchsias \$1.10



GERANIUM NEPALE

GERANIUM (Jer-ay'-ni-um)—Crane's-bill

The true geranium is a hardy perennial and quite distinct from the type grown in the north as a greenhouse sort. They all have lovely foliage and are persistent bloomers. Excellent subjects for the rock garden and border.

***cinerum**—A rare little alpine with gray-green leaves and large soft pink flowers all season. A real treasure. 4".

\$1.50 each

***endressi**—A lovely rose pink form that blooms even more freely than the type from May to November. Sun or shade. 10".

75c each; 3 for \$2.00

***grandiflorum**—Delightful deep blue growing about 20" tall. Give it some shade in the rockery or border and it will delight you.

55c each; 3 for \$1.40

***lancstriense**—A superb plant of restrained habit with masses of lovely salmon-pink flowers veined with crimson. Blooms from May to November. 4".

\$1.00 each

***nepale**—Large fern-like leaves and clear soft blue flowers. If kept cut back will bloom all season. Rare and extremely fine. 16". Full sun.

50c each; 3 for \$1.25; doz. \$3.50

***sanguineum**—Forms mounds of lovely fern-like foliage which takes on brilliant fall coloring. The large purplish-red flowers continue throughout the season. Full sun.

45c each; 3 for \$1.15; doz. \$4.25

***sanguineum album**—A lovely pure white form of the above.

55c each; 3 for \$1.40; doz. \$5.00

One each of the Geraniums \$4.95

GYPHOPHILA (Jip-sof'-il-a)—Baby's Breath

Clouds of fine starry flowers in feathery panicles highly prized for cutting. All sorts like full sun and good drainage. A little lime is beneficial.

Bristol Fairy—A persistent blooming double with large perfectly formed pure white blooms. 2'.

60c each; 3 for \$1.55

oldhamiana—A very lovely pink form, making compact plants 2 ft. tall. Free blooming.

40c each; 3 for \$1.10; doz. \$3.50

paniculata compacta—Forms a billowy mound 3' high. Indispensable as cut flower. Excellent dried for winter bouquets.

40c each; 3 for \$1.10

***repens bodgeri**—A new form of compact habit and perfectly formed double flowers. Excellent foliage and thoroughly hardy.

45c each; 3 for \$1.15

***repens, Rosy Veil**—A companion to bodgeri, of the same habit and type, but with dainty pink flowers.

50c each; 3 for \$1.25

One each of the 5 Gypsophilas \$2.10

GEUM (Jee'-um)—Avens

A group that is highly prized as a cut flower and doubly valuable because of the very ornamental evergreen, pinnate, basal leaves. If given plenty of moisture, will bloom all season. Full sun or light shade.

Dwarf Species

- ***Abbeys Orange**—Orange yellow flowers on 12" stems practically all season. Attractive foliage. **50c each; 3 for \$1.35**
- ***borisi**—Dwarf orange-scarlet. **45c each; 3 for \$1.15; doz. \$4.25**
- ***montanum**—Very compact form for a shady spot. Highly glossed leaves and brilliant yellow flowers on 6" stems. **50c each; 3 for \$1.25**
- ***Waight's Brilliant**—Finest dwarf evergreen. Gorgeous orange-scarlet in great profusion. **65c each; 3 for \$1.65**
One each of the 4 Dwarf Geums \$2.00

Border Types

- Borsch's West Hills**—Fine golden copper. Strong, vigorous grower. **55c each; 3 for \$1.40; doz. \$5.00**
- Fire Opal**—Dazzling orange-scarlet with rich orange sheen. The flowers are often 3" across on 2' stems, abundantly produced from May to October. Very hardy and a strong grower. Excellent foliage. An all-round fine garden subject. **65c each; 3 for \$1.65; doz. \$6.50**
- Lady Stratheden**—Pure yellow double flowers. **40c each**
- Mrs. Bradshaw**—Large double fiery orange red. **40c each; 3 for \$1.10; doz. \$4.00**
- Red Wings**—Bright strawberry-red. Double. **75c each; 3 for \$2.00**
- rivale, Leonards Var. fl. pl.**—Nodding coppery-rose in loose sprays. A valuable hardy, permanent plant. **60c each; 3 for \$1.55**
- Rynstroom**—Brilliant coppery orange. Double. **60c each**
One each of the Border Type Geums \$3.60

GENTIANA (Jen-shi-an'-a)—Gentian

So named after the ancient king, Gentius of Illyria, and truly living up to their royal heritage. The intensity of their coloring has made them the standard of color description for blue throughout the world. Prefer a rich, moist soil.

- ***acaulis**—The famous Gentian of the Alps. Dazzling blue trumpets cover the prostrate mats of heavy, deep green foliage. **60c each; 3 for \$1.55**

GLAUCIUM (Glau'-si-um)—Horned Poppy

Burbank Hybrids—A little known plant of striking beauty, forming 3' bushes which in the words of one writer are, "A decoratively feathered tangle of silver-frosted leafage." These plants bloom continuously, having very large silken poppies of waxy texture in shades of yellow, orange and buff. **50c each; 3 for \$1.25; doz. \$4.50**

GLOBULARIA (Glob'-u-lair-i-a)—Globe Daisy

A choice little tufted evergreen loving a sunny position but not particular as to soil.

- ***cordifolia**—Dark green, leathery mats of dainty spoon-shaped leaves with fluffy balls of steel-blue flowers. **50c each; 3 for \$1.25; doz. \$4.50**
- ***cordifolia alba**—A rare form of the above with dainty white flowers. **65c each**
- ***vulgaris**—A little heavier grower than cordifolia but tufted rather than creeping in habit. Round flower heads of fine blue. 8". **45c each; 3 for \$1.20; doz. \$4.50**
One each of the 3 Globularia \$1.50

GAILLARDIA (Gayl-lar'-di-a)—Blanket Flower

Brilliantly colored, continuous flowering perennials for full sun and poor soil.

- Burgundy**—Deep wine-red. **45c each; 3 for \$1.15**
- Dazzler**—Fiery red with broad band of dazzling gold. **40c each; 3 for \$1.10**
- ***Goblin**—Compact red and yellow. **40c each; 3 for \$1.10**
- Sun God**—Pure golden yellow. **55c each; 3 for \$1.35**
One each of the 4 Gaillardias \$1.60

HYDRANGEA (Hy-dran'-jee-a)

hortensis (Hybrid French Hydrangea)—This lovely pink hybrid is a hardy counterpart of the beautiful specimens offered by florists in pots. Should be treated as a perennial as it comes from the ground each season, forming huge heads of bloom in August on the new wood. **\$1.25 each; 3 for \$3.50**

HELLEBORUS (Hell-i-bor'-us)

Plant in spring or fall but give a cool moist position with light shade from the noontday sun for best results. After blooming, a dressing of well-rotted manure is beneficial.

- ***niger altifolius (Christmas Rose)**—A lovely winter blooming plant that will actually flower under the snow. Large palm-like leaves form a lovely setting for the waxy pink-tinted flowers. Split the stem when cutting and they will last for weeks in water. The variety altifolius is a decided improvement over the old niger. **Large \$1.25 each; 3 for \$3.25**
Small 75c each; 3 for \$2.00; doz. \$7.00
- ***foetidus**—Red tipped greenish flowers and magnificent evergreen foliage forming a shrub 15 to 18" in height. **Large \$1.25 each; 3 for \$3.25. Small 75c each; 3 for \$2.00**
- ***orientalis (Lenten Rose)**—A very strong vigorous grower with handsome flowers in the early spring. We can supply in either deep red or white. **Large \$1.25 each; 3 for \$3.25. Small 75c each; 3 for \$2.00**
One each of the 3 Helleborus: Large \$3.50; Small \$2.15



HELLEBORUS ORIENTALIS
(Lenten Rose)

HELLEBORUS NIGER ALTIFOLIUS
(Christmas Rose)



SINGLE HELIANTHEMUM



DOUBLE HELIANTHEMUM

HELIANTHEMUM (Hee-li-an'-thi-mum)— Sun Rose

One of the finest evergreen rock plants or ground covers ever introduced. Prostrate little shrubs with fine foliage and countless thousands of beautiful flowers over a long period. Excellent on dry banks or any sunny position with good drainage.

- * **American Beauty**—Strong grower with large soft pink flowers. 50c each; 3 for \$1.25
 - * **Anna Johnson**—Glorious coral pink. New. 50c each; 3 for \$1.25
 - * **Ball O' Copper**—Fine double orange. 50c each; 3 for \$1.25
 - * **Boule de Feu**—Double crimson. 45c each; 3 for \$1.15
 - * **Brunette**—Burnt orange, crimson rust eye. 45c each; 3 for \$1.15
 - Dazzler**—Vivid coppery red. Perhaps the brightest of all. 60c each; 3 for \$1.55
 - * **Flame**—Very large flame pink. Superb. 45c each; 3 for \$1.15
 - * **Goldilocks**—Very large yellow flowers. Silvery foliage. 40c each; 3 for \$1.10
 - * **Golden Nugget**—Very dwarf and prostrate. Golden yellow. 50c each; 3 for \$1.25
 - * **Jock Scott**—Gorgeous tomato red. Strong grower. 50c each; 3 for \$1.25
 - * **Mrs. Mold**—A new English importation with lovely fringed petals of salmon rose. 50c each; 3 for \$1.25
 - * **Sun Fleck**—Glorious double yellow. 50c each; 3 for \$1.25
- One each of the 12 sorts \$5.45

HEMEROCALLIS (Hem-er-oh-kal'-liss)—Day Lily

The new hybrid Day Lilies are truly a revelation to those who have grown only the older forms. The new reds, pinks, coppers and brilliant golden flowers are among the very finest of all garden subjects and have no superior as cut flower material. With a minimum of care they can be grown to perfection in sun or partial shade. As they bloom at different seasons, a careful selection will give flowers from spring till fall. We offer only sorts that are hardy anywhere.

- Aladdin** (Stout)—Lovely 4" flowers of deep cadmium yellow with a contrasting band midway on the petals of garnet-brown. 3½'. June and July. 65c each; 3 for \$1.65
- August Pioneer** (Stout)—A fine fall bloomer with innumerable flowers of chrome-yellow flushed with crimson. 3'. 65c each; 3 for \$1.65

- Bagdad** (Stout)—Richest Oriental coloring of red and brown make a gay and brilliant splash in the garden during mid-summer. 50c each; 3 for \$1.25
 - Caballero** (Stout)—A striking bi-color with huge 6" flowers. Vermilion petals and golden yellow sepals and throat. Mid-summer. 4'. \$1.25 each; 3 for \$3.25
 - Chengtu**—Brilliant orange-red with deeper flush on mid-zone and throat. Large 4½" flowers in late summer. 3½'. 50c each; 3 for \$1.25
 - fulva**—Very large tawny bronze blooming in July. 3½'. 40c each; 3 for \$1.10
 - fulva rosea**—A rare and lovely plant from Kuling, China. The blooms are a beautiful fulvous rose, red zone, yellow shaded base. Considered the finest in its color class. July. 4'. \$1.75 each; 3 for \$4.50
 - Hesperus** (H. P. Sass)—Immense 7" flowers of glorious lemon-chrome. Immaculate form and one of the giants. August. 4½". \$1.00 each; 3 for \$2.50
 - Hyperion** (Mead)—The giant yellow that is so very popular the world over. Huge Amaryllis-like flowers of clear pale yellow. Intensely fragrant, blooming in July and August. 3½'. 50c each; 3 for \$1.25
 - kwanso fl.-pl.**—The only double form, having huge blooms of intense orange bronze. July to September. 3½'. 50c each; 3 for \$1.25; doz. \$4.50
 - Mikado** (Stout)—Fine heavy flowers of deep orange with a heavy band of dark red-purple on the three petals. Striking. July. 50c each; 3 for \$1.25
 - Minnie** (Hayward)—Deep mahogany overlaid with crimson. The large flowers are brilliant beyond description. August. 3½'. \$1.00 each; 3 for \$2.50
 - Sachem** (Stout)—Brilliant dark red flowers that do not fade on the hottest days of mid-summer. Exceptionally fine. 3½'. 75c each; 3 for \$2.00
- One each of the Hemerocallis (value \$9.95) \$8.50

HEMEROCALLIS SPECIAL

We have a fine lot of Day Lilies on which the names have been lost. These are all excellent standard varieties in a wide range of color and blooming season. For landscape effect, these plants will help to add color during the summer months. Each collection will include one of the famous double Kwanso type.

10 for \$3.00; 25 for \$6.50

PLEASE NOTE—Hemerocallis will be shipped in the fall only. Shipments will start in early September and continue until the ground freezes.



HELIANTHUS CORONATION

HELIANTHUS (Hee-li-an'-thus)—Perennial Sunflower

Fine border plants growing 4' tall and forming fine clumps. Give full sun and fertilize freely for best results.

Coronation—Handsome fully double flowers of deep pure yellow. Fine landscape variety and exquisite cut flower.

50c each; 3 for \$1.25; doz. \$4.50

Loddon Gold—Similar to above with broad guard petals and fully double cushioned center. New and fine.

55c each; 3 for \$1.40; doz. \$5.00

One each of the Helianthus \$1.00

HYPERICUM (Hi-per'-i-kum)—St. John's Wort

A useful and lovely group of perennials. The single row of petals inclose a large cushion of beautiful stamens. A delightful cut flower.

***moserianum**—Immense blooms of brilliant yellow. The stamens are tipped with purple making it a very striking subject. 10".

60c each; 3 for \$1.55; doz. \$6.00

***patulum henryi**—A shrubby little plant suitable for the border or large rockery. Innumerable bright golden flowers from July to September.

50c each; 3 for \$1.25; doz. \$4.50

One each of the two Hypericums \$1.00

HEDERA (Hed'-ur-a)—English Ivy

***Albany Ivy**—A new dwarf ivy that is unexcelled for low borders or edging, because of its compact habits. Needs no trimming to keep it in bounds. Naturally forms a shapely mound of deep green leaves. Excellent for growing in low dishes for table decoration. Shade. 45c each; 3 for \$1.15; doz. \$4.25

***conglomerata minima**—A truly beautiful species of dwarf compact habit. The oddly twisted stems and leaves gives the plant a quaint oriental appearance. 65c each; 3 for \$1.65

***helix gracilis (Baltica Ivy)**—A lovely trailing vine with small marbled deeply cut foliage. A perfectly hardy evergreen for a shady spot.

55c each; 3 for \$1.40; doz. \$5.00

One each of the 3 Hederas \$1.50



HELIENIUM

HELIENIUM (He-lee'-ni-um)—Helen's Flower

Another gorgeous border plant blooming profusely in late summer. A very useful cut flower. 2½ to 4'.

Gartensonne—Broad heads of deep golden yellow.

50c each; 3 for \$1.25

autumnale rubrum—Bright terra cotta, suffused with wall-flower red.

45c each; 3 for \$1.15

Chippersfield Orange—4' stalks with immense heads of copper gold flowers flecked with flame red. One of the best.

50c each; 3 for \$1.25

Crimson Beauty—Deep crimson-red blooms in profusion. One of the darkest Heleniums.

55c each; 3 for \$1.35

Gypsy—One of the gayest things in the garden. The flower petals are red on one side and yellow on the other and the effect is enchanting.

55c each; 3 for \$1.35

nanum coccineo-bruneum—New early flowering dwarf sort with scarlet flowers shaded with brown. Very fine. 2'.

50c each; 3 for \$1.25; doz. \$4.50

peregrinum—Striking deep red flowers with a definite margin of gold. Very showy and decidedly different. 4'.

55c each; 3 for \$1.40; doz. \$5.00

***pumilum magnificum (Sunburst)**—One of the most free flowering yellow daisies in existence. Grows about 12" tall and fully as broad. Just a bouquet of pure gold. July until October.

55c each; 3 for \$1.35

One each of 8 Heleniums \$3.95

HELIOPSIS (Hee-li-op'-sis)—Orange Sunflower

One of the showiest of all border plants as well as affording quantities of excellent cut flowers. Shapely bushes 3' tall which are easily grown in any well drained soil in sun or partial shade.

incomparabilis—Excellent semi-double, Daisy-like flowers of deep golden orange produced in masses from the first of July to frost. Nothing introduced in recent years has received more favorable comment.

65c each; 3 for \$1.65; doz. \$6.50

HEUCHERA (Hew'-ker-a)—Coral Bells

One of the most satisfactory plants for edgings, rockeries, walls, or borders. The dainty bells held erect by wiry 10" stems form a bright mist of color from early spring till frost. The attractive heart-shaped leaves are evergreen. Give rich soil in full sun. The increased demand has prompted us to collect the entire color range of modern Heuchera.

***Bloom's Var.**—Bright coral pink.

50c each; 3 for \$1.25; doz. \$4.50

***Coral Mist**—A novelty of the first water. Very tiny coral colored blooms in immense heads comparable only to Baby Breath in usefulness for arrangements. Very popular with our visitors.

75c each; 3 for \$2.00

***Edge Hall**—Fine large flowered coral pink.

50c each; 3 for \$1.25

***Freedom**—New extra large flowered shell pink.

65c each; 3 for \$1.55; doz. \$6.00

***glabella**—Fine soft yellow native.

50c each; 3 for \$1.25; doz. \$4.50

***Oakington Jewel**—Unusual garnet shade.

50c each; 3 for \$1.25; doz. \$4.50

***Pink Delight**—Fine bright pink.

50c each; 3 for \$1.25; doz. \$4.50

***Pluie de Feu**—Deep rich red.

45c each; 3 for \$1.15; doz. \$4.25

***Queen of Hearts**—The brightest of all. Intense, fiery, coral scarlet.

75c each; 3 for \$2.00; doz. \$7.50

***rosamundi**—Tall coral pink.

40c each; 3 for \$1.10; doz. \$4.00

***sanguinea**—The original red coral bell.

40c each; 3 for \$1.10; doz. \$4.00

***Snowflake**—The finest and largest pure white yet introduced.

Immense heads and prolific bloomer.

60c each; 3 for \$1.55; doz. \$6.00

One each of the 12 Heucheras \$6.00

INCARVILLEA (In-kar-vil'-le-a)—Hardy Gloxinia

Exotic hardy plants from the orient having large Gloxinia-like flowers. Fine specimens for sunny position in the rockery or border.

***brevipes**—Bright rose-red flowers on 10" stems. The individual flowers are immense.

75c each; 3 for \$2.00; doz. \$6.00

***delavayi**—Huge trumpets of rich rose pink borne on stiff 18" stems in terminal trusses.

75c each; 3 for \$2.00; doz. \$6.00

***Olga**—A strong rampant grower having finely cut leaves on long rather weak canes which gives the plant a sprangly appearance most attractive against large rocks. Evergreen and thoroughly hardy. Pink flowers.

60c each; 3 for \$1.55

One each of the 3 Incarvilleas \$1.95



IBERIS (I'-ber-is)—Candytuft

Extremely useful evergreen shrublets making compact mounds of deep green and dazzling display of bloom. One of the hardiest of plants and if trimmed severely after blooming is a source of delight for many years in either rockery or border.

***Little Cushion**—Very compact evergreen cushions hidden by white bloom in May.

45c each; 3 for \$1.15; doz. \$4.25

***Little Gem**—A dwarf uniform grower covered with masses of pure white flowers in very early spring and persisting over a long season.

40c each; 3 for \$1.10; doz. \$4.00

***saxatalis**—Prostrate little evergreen that is completely hidden by masses of snow white flowers in May. Rare and exquisite.

75c each; 3 for \$2.00

***Snow Flake**—A splendid new sort with exceptionally large white flowers. 8".

45c each; 3 for \$1.15; doz. \$4.25

***tenoreana**—A fine delicate pink. Will bloom itself to death if not pruned severely during the summer.

50c each; 3 for \$1.25; doz. \$4.50

One each of the 5 Iberis \$2.35

IRIS SIBERICA—Siberian Iris

Vigorous, graceful, grass-like foliage which retains its beauty throughout the season makes this class of prime value as a landscape variety. Especially effective in masses about the pool or waterside, but equally good in the border or large rockery.

Bob White—Charming white flowers with rich yellow blotch at the throat.

45c each; 3 for \$1.15

Butterfly—Excellent light blue. 30".

45c each; 3 for \$1.15

Caesar—A fine blue-purple of excellent substance.

50c each; 3 for \$1.25

Caesar's Brother—48". H.M., A.I.S. 1936. A rich glossy, black-purple of perfect form. The darkest of all.

65c each

Florie Ridler—Large medium blue. 48".

45c each; 3 for \$1.15

Lewellyn—Glorious bright blue on 4' stalks.

50c each; 3 for \$1.25

Perry's Blue—Wonderful, clear sky blue with white markings. 4".

35c each; 3 for \$1.00

Sky Blue—The blue of the spring sky accentuated by a touch of brown in the throat. Lovely.

75c each; 3 for \$2.00

Snowcrest—38". Sparkling, waxy-white beautifully ruffled.

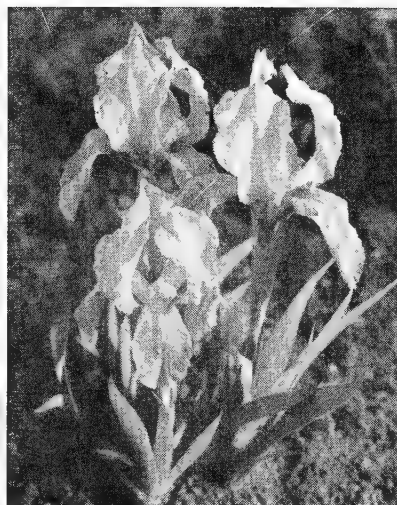
65c each; 3 for \$1.65

Wisteria—Very large flowered form with heavy, firm substance. Fine light blue on sturdy 4' stems. Greatly admired by everyone.

\$1.50 each; 3 for \$4.00

One each of the Siberian Iris \$5.75

◀
INCARVILLEA
DELAVAYI



IRIS PUMILA (Page 23)



SIBERIAN IRIS

BARGAIN GROUP

Any of the following standard Iris varieties at 35c each; 10 for \$3.25; all 30 for \$7.50 labeled. Collection offers do not apply to this group.

Beuschleys Giant—Gigantic medium blue.
Birchbark—Good clean white. Prolific.
Buckskin—Immense buckskin tan.
California Gold—Large, bright yellow.
Cheerio—Brilliant red and bronze.
Chosen—Tall, sulphur-yellow.
Claret Velvet—Rich velvety wine red.
Dore—Standards yellow, falls cream.
Dymia—Deep blue-violet. Blue beard.
E. B. Williamson—Burnished coppery-red.
Eros—Very fine bright salmon pink.
Frieda Mohr—Huge rosy lilac-pink.
Glen Ellen—Burnished golden tan.
Indian Hills—Smooth mulberry red.
Louvois—Lustrous velvety brown.
Missouri Night—Deep blue bi-color.
Mme. L. Aureau—White netted rosy violet.
Ozone—Rosy lavender and copper.
Pink Satin—Smooth orchid pink.
Rebellion—Very large bronze red.
Sierra Blue—Beautiful tall blue.
Smolder—Deep purple with red sheen.
The Darb—Deep violet and cherry red.
Titian Lady—White with flaming beard.
Token—Red copper blend.
Wasatch—Huge blue and white plicata.
White Lady—Dainty white. White beard.
Wildfire—Brilliant fiery red.
Wynooche—Smoky lavender and bronze.
Zebra—Striped leaves. Blue flowers.



BEARDED IRIS

PLEASE READ THE FOLLOWING CAREFULLY BEFORE ORDERING IRIS

TIME OF SHIPMENT—We begin shipping Iris about July 1st and continue during the balance of the summer and fall. **POSITIVELY NO IRIS WILL BE SHIPPED IN THE SPRING**, but it may be included with your spring order and shipment will be made at the proper planting time.

The following list has been carefully selected from the world's finest Irises, regardless of price. We are constantly revising and discarding as new and better varieties are developed. We are very proud of our Iris planting and are always glad to have visitors during the blooming season.

MAKE YOUR OWN COLLECTIONS—On orders amounting to \$5.00 you may select one extra 50c and one 35c Iris. On orders of \$7.50, select one additional \$1.00 (or two 50c) and one 50c Iris. On \$10.00 orders, select any additional \$2.00 Iris value. On \$25.00 orders, select any additional \$5.00 Iris value. This offer applies only to the following Tall Bearded Iris and not to the bargain group nor to anything else in this catalog.

REMEMBER—We prepay all Iris orders over \$3.00 to any part of the U.S.A.

Alba Superba—A truly superb new white. The huge flowers having beautifully domed standards and flaring falls of very heavy substance, are perfectly spaced on sturdy branches. **\$2.00 each**

Altamohr—A fine new cross between Alta California and Wm. Mohr. Lovely large orchid-violet. 3'. **\$2.00 each**

Amigo—Suggestive of purple Pansies because of the velvety texture of the violet standards and purple falls. One of the most popular of all Iris. **50c each; 3 for \$1.25**

Angelus—Exquisite pink with violet shadows and golden heart. Large. Late. **50c each; 3 for \$1.25**

Ann Newhard—Rich velvety blue bicolor. **60c each**

Aubanel—A very lovely shrimp pink from France. Very large perfectly formed flowers. **50c each; 3 for \$1.25**

Auburn—A distinct new color in Iris. Deep henna-brown with a glowing blue spot at tip of the beard. Very large flowers on 3' stalks. **\$6.00 each**

Azure Skies—A glorious new azure blue with domed standards and widely flaring falls. Among the finest of all blue Iris. **\$1.00 each; 3 for \$2.50**

Balmung—Our choice of yellow plicatas. Cleanly etched brown markings over a soft yellow ground. Very large. Perfect form. **60c each; 3 for \$1.50**

Bandmaster—An immense soft blue several shades deeper than Great Lakes. Does not fade as so many in this color class do. **\$1.50 each; 3 for \$3.75**

Berkeley Gold—This gigantic golden Iris is about as nearly perfect as anything yet introduced. Well branched three foot stems and solid deep yellow flowers of finest substance. Considered by many judges as the best yellow Iris to date. **75c each; 3 for \$2.00**

Black Forest—A fine silken deep blue-black. This is the blackest Iris we have seen. 26". **\$2.50 each**

- Blue Champagne**—This is the clearest blue we have found. Large beautifully ruffled flowers the color of spring skies. **\$3.00 each**
- Blue Frills**—Glorious azure blue, blue tipped beard. **\$2.00 each**
- Blue Rhythm**—Superb medium blue of noble proportions. Standards broad and domed with wide flaring falls. Perfectly branched 4' stalks and unusually robust, this Iris certainly deserves a place in every garden. Dykes Medal Winner for 1950. **\$3.50 each**
- Blue Shimmer**—A new and entirely different plicata. The white ground is evenly peppered with blue instead of the familiar stitching. The regal blooms have a charm that is beyond description. An extremely large flower and a strong grower. **\$1.00 each; 3 for \$2.50**
- Bright Melody**—A new coloring of bright concord grape effect. This is a very smooth, beautifully finished flower. **\$1.25 each; 3 for \$3.00**
- Brown Thrasher**—Like the glint of sunshine on the wing of a brown thrasher. This is a bright, exciting Iris in two shades of brown. **\$1.00 each; 3 for \$2.50**
- Bryce Canyon**—A marvelous new bright henna-copper colored Iris. The domed standards and broad falls gleam in the sun like the walls of its famous namesake. A complete new break in Iris coloring. One of the best. **\$2.50 each**
- Capt. Wells**—Deep reddish maroon-purple with an unusual shine or gloss that makes it stand out among all other dark Iris. Large well formed flowers of excellent substance. **75c each; 3 for \$2.00**
- Caroline Burr**—Something really different in cream colored Iris, having an odd cast of elusive green. Immense blooms on 4' stems. HM, 1944; AM, 1946. **75c each; 3 for \$2.00**
- Casa Morena**—Immense flowers of pure glistening copper-brown. One of the very finest DeForest introductions. **\$1.50 each**
- Cascade Splendor**—Huge ruffled pink with apricot shadings. Heavy 40" stalks bearing up to 10 flowers. **\$3.00 each**
- Cherie**—Very large ruffled pink of excellent substance. This is the most popular of all the new Hall "flamingo pinks". These new sorts show no shadow of violet. They are pure peach pink and lovely beyond description. **\$12.50 each**
- China Maid**—An intriguing blend of pink, golden bronze and soft lilac. Large, well proportioned flowers of smooth texture on 4' stems. **60c each; 3 for \$1.50**
- Chivalry**—A smooth ruffled blue of extra fine substance. Strong sturdy stalks and perfect branching. Dykes Winner in 1947. **\$6.00 each**
- City of Lincoln**—Brightest and best variegata. Standards intense golden yellow. Falls fiery red. **50c each; 3 for \$1.25**
- Copper Rose**—Marvelous blending of old rose, copper and tan brightened by a glowing golden center. Large flowers of broad standards and falls. **75c each; 3 for \$2.00**
- Coral Mist**—An outstanding flower of bright rose pink lightly flushed with cinnamon. The falls are a little deeper than the standards but the effect is decidedly pink. **75c each**
- Corinthe**—A fine deep blue with beautifully flaring falls. This huge Iris is one of the very last to bloom, lengthening the season by a good 10 days. **50c each**
- Daybreak**—Glorious coppery pink with deeper undertone. Closed standards and semi-flaring falls on strong 4' stalks. Tied for Dykes in 1946. **\$1.00 each**
- Display**—Glorious rich deep red that is so dark as to appear almost black. This Spanish red has fire and life that is seldom seen in dark colored flowers of any sort. **75c each**
- Edward Lapham**—This is considered by some as the reddest Iris to date. Certainly it is a very fine richly colored maroon-red lightened by a bronzy gold beard. **\$1.50 each**
- Elmohr**—Dykes Medal winner in 1945. A colossal flower of rich reddish violet having thick heavy substance that withstands all weather. No Iris has ever attained such popularity in so short a time. (See color cut on front cover). **\$1.00 each; 3 for \$2.50**
- Elsa Sass**—A glorious shade of clear sulphur yellow with a greenish cast and a near white blaze at the haft. This lovely Iris is beautifully frilled. Very fragrant. **50c each; 3 for \$1.25**
- Fair Elaine**—A distinctly different yellow having cream standards and bright yellow falls set off by a fiery orange beard. **50c each; 3 for \$1.25**
- Firecracker**—One of the most spectacular Iris grown. Startling red plicata with bright yellow trim. Large flowers of good substance. 36". **\$2.00 each**
- Fort Knox**—An exquisite soft yellow. Flowers large and well spaced on 3' stems. Altogether charming. **75c each**
- Franconia**—Very large strong growing white of excellent substance. 36". **\$1.00 each**
- Frank Adams**—An unusually large well proportioned Iris with rosy tan standards and rose-red falls, beautifully blended. **50c each; 3 for \$1.25**
- Golden Majesty**—Fine large deep yellow, perfect in every respect. Very late and thoroughly hardy. **50c each; 3 for \$1.25**
- Golden Spike**—Stunning deep yellow with rich orange beard. A strong tall grower with very large flowers, this Iris holds its own with the best of the new yellows. **60c each**
- Golden Treasure**—Solid deep cream with a heart of golden orange. Very tall and perfectly branched, this Iris is always an outstanding beauty. **50c each; 3 for \$1.25**
- Grand Canyon**—A distinctive novelty in shades of deep plum, copper and gold. A color combination that defies description. A great favorite. **60c each; 3 for \$1.50**
- Grace Mohr**—An enormous grey-blue flower with almost horizontal falls on very tall stalks. One of the finest Mohr seedlings. **60c each; 3 for \$1.50**
- Great Lakes**—A clear sky blue self of regal beauty. This Iris has the enviable record of heading the Iris symposium for four successive years. **75c each; 3 for \$2.00**
- Gudrun**—A superlative white Iris having heavily textured petals like those of magnolia. Dykes Medal winner. **35c each; 3 for 90c**
- Gypsy Baron**—A big bold flower of perfect form and habit. This is a deep blue purple plicata that is marbled rather than stitched and the effect is most intriguing. Very fragrant. **75c each; 3 for \$2.00**
- Harriet Thoreau**—A delightful pure orchid-pink that is slightly ruffled. Large flowers well spaced. **\$1.00 each**
- Helen McGregor**—Beautifully ruffled flowers of clear pale blue. This is as near perfection in form and habit as has been attained in the Iris world. Dykes Medal Winner in 1949. **\$6.00 each**
- Hoogsan**—This new regal giant introduced in 1947 is greatly admired here. The huge flowers, borne on well branched 50" stalks are of unusually smooth lacquer-like Delphinium-blue. The perfection of form in the parent, Hoogiana, has been maintained in this new hybrid. Thoroughly hardy, a prolific bloomer, and rapid increaser. **\$2.50 each; 3 for \$6.50**
- Icy Blue**—The palest blue self, almost a white. Large well formed flowers on tall nicely branched stems. **50c each**
- Indiana Night**—This is the finest seedling from the famous Sable. Larger and nearly as dark. A lustrous deep blue purple. **\$2.00 each**
- Indiana Sunset**—A rich blending of sunset colors with a definite pink effect. A large, tall grower with well branched stalks. Very popular with our visitors. **60c each**
- Jake**—A glorious big white that has been an outstanding favorite with our visitors for several years. It is among the very largest of all Iris and of perfect form. A wonderful performer. **60c each; 3 for \$1.50**
- Jasper Agate**—Brilliant shade of coppery red gold. Velvety smooth and truly one of the brightest Iris grown. **\$1.50 each**
- Katherine Fay**—Fine tall white with large flaring ruffled flowers. One of Fay's finest introductions. **\$2.00 each**
- Lady Mohr**—A new and entirely different member of the Wm. Mohr family. The huge standards are oyster shell white and the falls are pale chartreuse or greenish yellow. In common with the family, it has unusually heavy substance and long lasting quality. **\$1.50 each; 3 for \$3.75**
- Lake Breeze**—A Glorioso seedling, heavily ruffled and wide flaring falls. A little deeper blue than its famous parent, but larger and more floriferous. **\$2.00 each**

- Lake George**—When introduced, this bright blue self was considered the “bluest” of all. The domed standards and broad flaring falls make this an eye-catcher. **\$2.50 each**
- Late Sun**—An intense deep yellow of unusual brilliance. Thick heavy petals make up a very large flower on 40” stalks. **60c each; 3 for \$1.50**
- Lighthouse**—This bright rose blend is one of the most popular Iris we grow. The huge dome shaped bloom seems to be illuminated by an inner glow of gold. Very aptly named. **50c each; 3 for \$1.25**
- L. Merton Gage**—Immense flowers of raspberry pink and cream carried on strong well branched stems. As a pink, this one is hard to beat. **60c each; 3 for \$1.50**
- Lord Dongan**—A striking and most unusual shade of Chinese violet. Immense flowers, truly breathtaking. **75c each**
- Los Angeles**—An immense cool white lightly brushed with clear blue about the haft. So popular that stock is always short. **40c each; 3 for \$1.00**
- Mary E. Nichols**—Smooth creamy white with extra heavy substance. HM 1940; AM 1943. **50c each; 3 for \$1.25**
- Mary Vernon**—This combines the most brilliant colors found in Iris. Standards bright old gold flushed Chianti ruby at midrib. The broad flaring falls are intense Chianti ruby. So very bright that it stands out in the field among all others. **\$1.50 each; 3 for \$3.75**
- Master Charles**—Glowing mulberry purple with a touch of brown in the haft. Mulberry beard tipped with brown. A brilliant, spectacular flower. **\$1.75 each; 3 for \$4.50**
- Matterhorn**—Pure snow white of wonderful size and substance, often showing four fully opened flowers beautifully spaced at one time. **50c each; 3 for \$1.25**
- Melanie**—An exquisite new light pink, often showing five fully opened flowers on a stalk. Tall, well branched and vigorous. **60c each; 3 for \$1.50**
- Melitta**—A unique salmon ivory with a fiery tangerine beard. This Iris must be seen to be appreciated. It is a definite novelty. **60c each; 3 for \$1.50**
- Mellowglow**—Lovely honey-peach with soft pink flush. This comes from the “flamingo” pinks and has unusual pink tones which are most appealing. **\$3.00 each**
- Mexico**—This beautiful blend is a personal favorite. The standards are golden buff and the falls are a glowing red brown copper bordered with golden buff. Perfectly gigantic in size and lightly ruffled. We are completely sold on this one. **\$1.50 each; 3 for \$3.75**
- Ming Yellow**—Rich, pure deep yellow of unusual smoothness. The huge well-rounded flowers are carried on perfectly branching stalks. **60c each; 3 for \$1.50**
- Minnie Colquitt**—Massive white plicata that is really different. The stitching of bright purple comes in broad lines about the standards and falls alike. An impressive flower on tall heavy stalks, completely unlike any other plicata. **\$1.50 each; 3 for \$3.75**
- Miss California**—A gigantic lilac-pink. Very tall and vigorous. A sensational pink toned Iris. **50c each; 3 for \$1.25**
- Missouri**—A wonderful porcelain blue. Very smooth finish. Fine size and form. Dykes Medal winner. **50c each; 3 for \$1.25**
- Mohrson**—Intense violet-purple seedling of Wm. Mohr. The huge blooms are heavily veined deep purple. A grand Iris. **50c each; 3 for \$1.25**
- Moonlight Madonna**—A larger more ruffled Elsa Sass with the same lemon ice coloring, shading to ivory in the center of the falls. Tall, strong grower. **\$1.00 each; 3 for \$2.50**
- Moonlit Sea**—This unique novelty is made up of cream background overlaid bright lavender and mulberry purple with golden haft. Always a complete sell out on this one. **50c each; 3 for \$1.25**
- Mrs. Willard Jacques**—Fine large deep pink, overlaid with apricot, beautifully ruffled and frilled. **35c each; 3 for 90c**
- Mulberry Rose**—The name was well chosen for this giant Iris. It is a purplish rose color completely different from any other sort we have grown. Tall, well branched stalks and flowers of heavy substance. **75c each; 3 for \$2.00**
- Nightfall**—Falls rich dark pansy purple and standards several shades lighter. The whole flower has a sheen like finest velvet. **60c each; 3 for \$1.50**
- Ola Kala (Oh’la Ka-lah’)**—This is the Greek way of saying Okay, and this Iris is certainly well named. In 1946 this one tied for the Dykes Medal and in 1948 won it outright. Of all the fine new yellow Iris now being grown, this is perhaps the deepest in color. Heavily ruffled, medium large flowers on sturdy 3’ stalks beautifully spaced. Add to this the fact that Ola Kala is unusually vigorous and prolific and we have an outstanding Iris. **\$1.00 each; 3 for \$2.50**
- Old Parchment**—A light creamy tan with a golden buff overlay. This Iris has a peculiar charm all its own that has made it immensely popular. **50c each; 3 for \$1.25**
- Orloff**—A stunning plicata. It is heavily dotted and stitched with cinnamon brown on cream. **50c each; 3 for \$1.25**
- Ormaco**—A fine seedling of Ormohr having a metallic cast. A magnificent flower of mulberry overlaid with bronze. Superb. **75c each; 3 for \$2.00**
- Ormohr**—One of the largest Iris grown. Pale silvery violet with deeper markings. Unusually heavy substance and long lasting qualities have made this giant our most popular Iris in recent years. **50c each; 3 for \$1.25**
- Painted Desert**—All the glorious coloring of the Arizona desert have gone into the makeup of this stately Iris. It is one of the tallest we grow with well branched stems showing the lovely flowers to the best advantage. A blend of violet, bronze, copper, and salmon buff. Exquisite. **\$1.00 each; 3 for \$2.50**
- Pink Reflection**—Lovely pink self. The coloring is delicate and seems to have an underlay of fleeting buff. The flowers are large and crisp with excellent substance, well spaced with widely flaring falls. **\$1.25 each; 3 for \$3.25**
- Pink Ruffles**—A heavily fluted and ruffled flower of soft lilac pink. Not very tall but a glorious sight in a clump. **60c each; 3 for \$1.50**
- Prairie Sunset**—This magnificent Sass creation heartily deserves the Dykes Medal which it won in 1943. A marvelous blending of all the sunset colors. **75c each; 3 for \$2.00**
- Priscilla**—A new white that is really white even to the beard. Not tall but effective in the garden or as a cut flower. Heavy grower and prodigious bloomer. **75c each**
- Prince of Orange**—Solid golden orange self. Not as large as some but so brilliant a color that it stands out from across a field of aristocrats. **50c each; 3 for \$1.25**
- Radiant**—Burnished golden bronze standards and glowing copper red falls. A striking Iris of unusual brilliance. **50c each; 3 for \$1.50**
- Ranger**—Very nearly a true crimson-red self. A dark but very brilliant flower. As a red it has few equals and no superiors. 3’. **\$1.50 each; 3 for \$3.75**
- Remembrance**—A delightful pink blend with sufficient gold in the make-up to lighten the effect. It fairly sparkles in the sun. **75c each; 3 for \$2.00**
- Rose Splendor**—Luscious pink with soft apricot shading. This is a very strong grower with beautifully branched stalks and immense flowers. The coloring is entirely distinctive. If you are looking for something different in pinks, this is it. **\$5.00 each**
- Royal Scot**—This has been one of the most popular plicatas with our visitors for several years. A tall, large flowered sort with a very heavy red trim of pleasing burgundy red. The veining is so heavy that the flowers seem to be red from a little distance. **75c each; 3 for \$2.00**
- Ruth Pollock**—One of the most popular plicatas. Lovely soft yellow heavily patterned with reddish purple. Perfect form and habit. **50c each; 3 for \$1.25**
- Sable**—Deep black violet with a wonderfully lustrous sheen. A truly stunning bloom of fine size and form. **75c each**
- Salar**—Creamy flesh entirely dominated by an overlay of salmon. 3’. **50c each; 3 for \$1.25**
- Shannopin**—Striking flower with creamy yellow standards and bright pink falls. A very prolific bloomer. 4’. **60c each; 3 for \$1.50**

Sharkskin—A huge silky white with extra heavy substance. Flowers withstand wind and rain unusually well. The perfect formation and fine branching have made it extremely popular. **\$1.00 each; 3 for \$2.50**

Sheriffa—Onco-bred Iris of deep metallic violet lightly veined. A striking flower reaching 5'. **75c each; 3 for \$2.00**

Siegfried—A really huge flower and distinct among all plicatas. Very definite stitching of deep purple over a buff yellow ground. **50c each; 3 for \$1.25**

Silver Susie—The tallest Iris we grow. The beautifully branched 63" stalks bearing immense pure white flowers are a glorious sight. **\$1.25 each; 3 for \$3.25**

Snow Carnival—Immense ruffled snow-white flowers on tall well branched stalks. One of the most regal whites. **\$1.50 each**

Snow Flurry—A spectacular flower of blue-white beautifully ruffled and frilled, on 48" well branched stalks. **\$1.00 each**

Snow Velvet—A very fine white of heavy substance, holding up well even in very hot weather. Golden beard. **75c each**

Solid Mahogany—The name aptly describes this one. It has magnificent plush-like substance and is like a piece of fine velvet in the sun. There are no haft venations to mar the effect. (See color cut on back cover.) **\$2.50 each; 3 for \$6.50**

Sonrisa—One of the very best pink blends, coppery-pink predominating, with an undertone of soft metallic yellow. Unusually large flowers and very free blooming. **\$1.00 each**

Spanish Peaks—A beautiful new large flowered pure white that combines outstanding size and height with the distinctive charm and simplicity that only a true self can have. We quote from the introducer: "Spanish Peaks is white—nothing else, just white—as pure and unmarred as the great snow masses that cover the lofty peaks for which it is named. The throat, the beard, the style-arms—all are white as the gleam in wastelands that lie beyond the timberline where the winter storms are born." **\$8.00 each**

Spindrift—Translucent, delicate seashell or coral pink, with fiery tangerine beard. Spectacular and very scarce. **\$1.50 each; 3 for \$3.75**

Spun Gold—Probably the most sought after yellow Iris. Perfect in every respect. Immense flowers well spaced on 4' stalks of heavy substance. Dykes Medal 1944. **75c each**

Stained Glass—Unlike anything else this is a solid copper colored flower with a reddish tone. Glows like burnished copper in the sun. **50c each; 3 for \$1.25**

Stardom—A luscious coppery-pink and apricot buff with brilliant tangerine beard. The effect is pleasing in the extreme. We like it better each year. **50c each; 3 for \$1.25**

Sylvia Murray—Enormous flowers on 40" stems of soft silvery blue. This grand Iris is among the first to bloom. We class it among the finest of all Iris. **\$1.50 each; 3 for \$3.75**

Tapestry Rose—Sparkling rose blend that gives a decided pink effect in the garden. Strong and vigorous. 3'. **\$1.00 each**

Tea Rose—Lovely rose-pink that has unusual carrying quality. Large, tall, strong growing habit. **\$1.50 each**

Three Oaks—One of the very finest rose-pink blends overlaid with copper rose. Immense flowers on 40" stalks. This one is an eye-opener. **\$2.00 each; 3 for \$5.00**

Three Sisters—A striking novelty having cream colored standards and red-violet falls. 40". **75c each; 3 for \$2.00**

Tiffanja—Standards colonial buff, falls creamy white, both lightly bordered with specks of brown. **75c each; 3 for \$2.00**

Tiffany—The most popular plicata ever introduced. Enormous frilled flowers of soft yellow generously marked with bronzy pinkish-violet. **50c each; 3 for \$1.25**

Tishomingo—Glorious wisteria blue self with a frosty sheen. The flowers are very large and broad; stalks tall and well branched. **75c each; 3 for \$2.00**

Tobacco Road—One of the outstanding novelties in recent years. A golden tobacco-brown self with closed standards and flaring horizontal falls. Visitors invariably exclaim over it. We think it superb. **\$2.50 each**

Treasure Island—Gigantic flowers of pure gold washed with cream at the center. **50c each; 3 for \$1.25**

Violet Symphony—An enormous violet self with just a touch of brown at the haft. Just about tops in its color class. **60c each; 3 for \$1.50**

Wabash—Most striking amoena of all time. Beautifully waved white standards and falls of deep violet blue margined white. The large flowers are beautifully spaced on tall stalks. Dykes Medal winner. **50c each; 3 for \$1.25**

West Point—A magnificent indigo blue bicolor blooming very late. **50c each; 3 for \$1.25**

White Goddess—As white and sparkling as new fallen snow. Very large and prolific. 40". **60c each; 3 for \$1.50**

White Wedgewood—A new pale porcelain blue of gigantic size. A decided blue at the base of a white beard gives this one a distinctive appearance. **\$1.50 each; 3 for \$3.75**

Wm. Setchell—The largest Iris we grow. A violet blue bicolor. **60c each; 3 for \$1.50**

SPECIAL IRIS OFFER

To those who wish a collection of fine Iris, but are not interested in the names, the following prices should make instant appeal. These are fine roots of grand varieties and all will be different but shipped without names.

25 for \$4.50; 50 for \$8.00; 100 for \$15.00

IRIS—Various Species

***cristata, Gold Crest**—Blue with rich golden crest. **50c each**

***cristata, McDonald's Var.**—A very rare pale grey-blue with brilliant golden patch at the throat. A little larger than the type. **\$1.50 each**

dichotoma—This is the Vesper Iris with countless small blue flowers opening in late afternoon each day. August. 3'. **50c each; 3 for \$1.25; doz. \$4.50**

D. K. Williamson—A lovely Louisiana hybrid of deep, rich royal purple. A superb flower. 3'. **55c each; 3 for \$1.40**

***graminea**—Rich violet and blue flowers. Plum scented. 8". **65c each**

pseudacoris—Bright yellow with brown markings. May be grown in the pool or beside a stream in full sun but does well in the border. 60". **50c each**

***ruthenica**—Rare dwarf with rich deep blue blooms. **60c each**

Spuria, Mrs. A. W. Tait—36". Soft porcelain blue, with a yellow spot at the throat. **50c each**

Spuria, Lord Wolseley—46". Fine violet-purple with a spot of gold on each petal. **50c each**

Spuria, Ochroleuca—Lovely tall snowy white with bright golden blotch. **50c each; 3 for \$1.25**

tectorum—Deep blue Oriental. Frilled and crested. **55c each**

***tectorum album**—Rare snow white form. **65c each**

tectorum, Paltec—Heavenly blue hybrid. **55c each**

One each of the Iris species \$7.50

INTERMEDIATE IRIS

These Iris bloom after the dwarfs and before the Tall Bearded. They serve to make a succession of bloom from April to June as well as being very lovely in the garden and for cutting.

Dorothea—Lovely soft grey-blue with standards that fall outward showing the beautiful heart of the bloom. **35c each; 3 for 90c**

Elizabeth Huntington—A large blue bi-color that is crimped and ruffled throughout, making the flower appear to be made from crepe paper. **35c each; 3 for 90c**

Hobo—Distinctive yellow and maroon bicolor. Its late blooming lengthens the season of this group. **35c each; 3 for 90c**

Lady Luck—A rich deep violet purple self, valuable for its especially early blooming habit. Very fragrant. **35c each; 3 for 90c**

Midwest—Lovely plicata of rich mulberry on a cream ground. Often has four standards and four falls. **35c each; 3 for 90c**

Nyx—Deep purple with a rich velvety sheen. One of the very darkest Iris grown. **50c each; 3 for \$1.25**

Zwanenburg—Very lovely soft tan and copper with flecks of brown. A real novelty with pogocyclus heritage. **50c each; 3 for \$1.25**

One each of the Intermediate Iris \$2.25; 3 for \$6.00

TWICE-FLOWERING IRIS

This splendid group blooms freely in the spring and again in September and October. Some of the dwarfier types are almost continuous bloomers. For best results they should be watered freely during the summer months.

- Autumn Elf**—Lavender and cream. Prolific bloomer.
- Autumn King**—Vigorous rich deep blue.
- Autumn Queen**—Pure snow white.
- Autumn Sunset**—Fine pink and buff blend.
- Autumn Surprise**—Fine medium blue self.
- Black Magic**—Intense deep blue.
- Cryso**—Fine deep orange yellow.
- Dorcas Hutcheson**—Rich pansy-violet.
- Eleanor Roosevelt**—Rich raisin-purple.
- Equinox**—A rich violet bi-color.
- Ethel Peckham**—A very reliable re-bloomer. Fine large tall red.
- Jean Siret**—Yellow striped with purple.
- Kansas Ingleside**—Fine Indian red.
- Lieut. Chavagnac**—Brilliant purple.
- Marti Everest**—Fine large deep blue.
- Olive White**—Cream with green gold veining and dark markings at the haft.
- Peggy Babbington**—Strong clear yellow.
- Polar King**—Very large white, flushed green.
- Sangreal**—A frilled yellow that is a most reliable rebloomer.
- September Skies**—A smooth violet with deeper falls.
- Ultra**—Brilliant ultra marine blue.
- White Autumn King**—Magnificent pure white.

40c each; any 10 for \$3.50

One each of the 22 Twice Flowering Iris \$8.25

10 sorts, unlabeled, \$2.85

IRIS PUMILA—Dwarf Bearded Iris

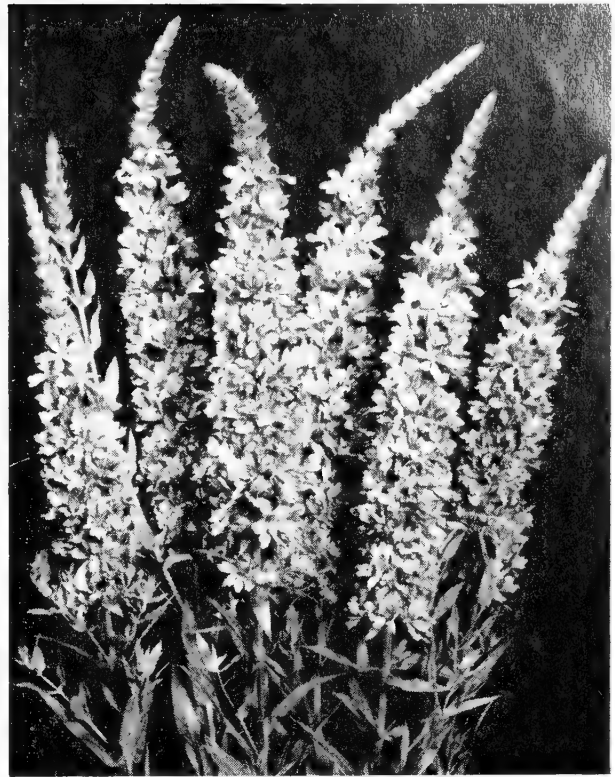
One of the finest of rock plants as they require very little care and when once established will increase in size and beauty for years. They are also used extensively as a border for the taller varieties, materially lengthening the season as they bloom several weeks earlier.

- ***Balceng Curiosity**—Attractive blending of yellow, purple and olive. Very fragrant. 8".
- ***Black Midget**—Buds soot black opening deep purple. 5".
- ***Blue Beard**—Olive-white with purple streaks on falls. 8".
- ***Bouquet**—White and heliotrope.
- ***Candida**—Fine pure white.
- ***Cyanea**—Deep royal purple. Extra large bloom.
- ***Endymion**—Dark ruby red self. 8".
- ***Excelsa**—Good pale yellow. Prolific.
- ***Fairy**—Lovely soft sky blue. 6".
- ***Florida**—Soft yellow self.
- ***Glee**—Fine light yellow self.
- ***Golden**—Smooth deep yellow. Large flowered.
- ***hybrida coerulea**—Deep blue purple.
- ***Huron Imp.**—Very large deep blue.
- ***Josephine**—Dainty white touched with yellow.
- ***Ladies of Peeling**—New distinct pale blue. 9".
- ***La Lido**—A white bearded blue purple of merit.
- ***La Tulipe**—Excellent medium yellow. 7".
- ***Louise Starker**—Good clear white, late.
- ***Margaret**—Dainty sky blue. 6".
- ***Marocain**—Deep velvety blue purple. 6".
- ***Negus**—Intense purple self, orange beard. 5".
- ***Rich Blue**—Deep velvety blue.
- ***Rose Mist**—Soft mauve pink. Early.
- ***Sambo**—Very dark blue. Early.
- ***Statalae**—Dainty cream white. 9".
- ***The Bride**—Excellent clean white. 6".
- ***Tampa**—Fine new red midget with grassy foliage. Distinct. 9".
- ***Wigan**—Distinct brownish red tone.
- ***Ylo**—Bright yellow of good form. 6".

35c each; any 10 for \$3.25

One each of the 30 Dwarf Iris \$9.00

10 sorts, unlabeled, \$2.25



LYTHRUM

LYTHRUM (Lith'-rum)—Loosestrife

Stately border plants 5' tall forming shapely bushes of great value for the border and also for naturalizing in woodlands or along streams.

- Dropmore Purple**—A new purple sort in fine feathery masses. 55c each; 3 for \$1.40
- Lady Sackville**—Purplish rose. 40c each; 3 for \$1.10
- Morden's Pink**—An outstanding novelty with large rose pink florets. 55c each; 3 for \$1.40
- The Beacon**—A new and unusually brilliant shade of red. 55c each; 3 for \$1.40

One each of the 4 Lythrums \$1.85

LILIUM (Lil'-i-um)—Lily

Please note that some Lilies may be planted only at certain seasons. However, these may be included on spring orders and shipment will be made at the proper planting season.

- candidum (Madonna Lily)**—Lovely, bell-shaped pure white fragrant flowers beloved for generations. Must be planted only in late summer or fall, as they make basal leaves in the fall. Plant only 2" deep in full sun, or very light shade. 55c each; 3 for \$1.40; doz. \$5.00

DAY LILY—See *Hemerocallis* and *Funkia*.

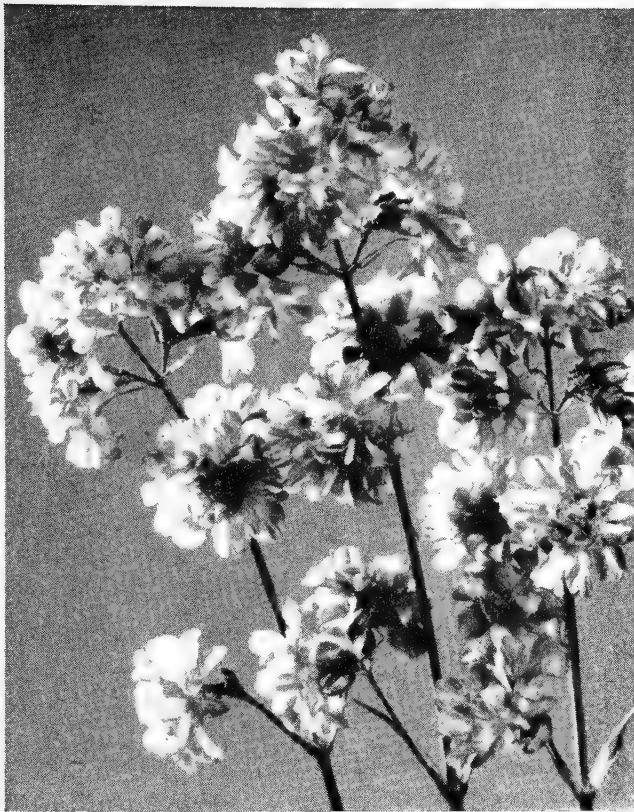
- regale**—Large white fragrant trumpets with yellow throat shaded pink on the outside. The most admired of all white lilies. Plant 6" deep in spring or fall. 50c each; 3 for \$1.25; doz. \$4.50

- ***tenuifolium**—Slender stems and many recurved blooms of brightest scarlet. Plant 4" deep, spring or fall.. 40c each; 3 for \$1.10; doz. \$4.00

- tigrinum superbum**—An improved giant Tiger Lily. Bright orange spotted black. Plant 6" deep in spring or fall. 45c each; 3 for \$1.15; doz. \$4.25

- tigrinum fl.-pl.**—A fully double form of Tiger Lily. Plant 6" deep in spring or fall. 45c each; 3 for \$1.15; doz. \$4.25

- umbellatum**—Immense blooms in great umbels. Will succeed in sun or shade. Rich orange scarlet. Plant 4" deep in spring or fall. 45c each; 3 for \$1.15; doz. \$4.25



LYCHNIS VISCARIA SPLENDENS FL.-PL.

LYCHNIS (Lih'-nis)—Catchfly

Attractive perennials of easiest culture furnishing some of the brightest colors in the garden. Should be planted in groups in full sun where the effect is dazzling.

- chalcidonica**—3' vivid scarlet. 40c each; 3 for \$1.10
- ***viscaria fl. pl.**—Perfectly double florets in large heads of deep rose. One of the finest and most satisfactory hardy plants. 50c each; 3 for \$1.25; doz. \$4.50
- ***viscaria splendens**—Deep pink, 18". 40c each; 3 for \$1.10
- ***viscaria splendens alba**—A lovely new pure white form. 50c each; 3 for \$1.25
- ***viscaria, Zulu**—A glorious deep red sport that developed here. The unusual brilliance of color demands instant admiration. 75c each; 3 for \$2.00

One each of the 5 Lychnis \$2.35

LAMIUM (Lay'-mi-um)—Dead Nettle

A much neglected but worthwhile plant. Grown in partial shade with occasional severe shearing it is one of the loveliest dwarf plants. A great favorite with our visitors.

- ***maculatum**—Deep green foliage heavily marbled with red and silver above which the old rose salvia-like flowers bloom all season. 40c each; 3 for \$1.10; doz. \$4.00
- ***maculatum album**—A rare white flowered form. 45c each; 3 for \$1.15; doz. \$4.25

One each of the 2 Lamiums 75c

LILY-OF-THE-VALLEY—See Convallaria

LUPINUS (Leu-py'-nus)—Lupine

Stately plants forming large clumps. Should have full sun and plenty of moisture. We furnish strong young plants that establish easily.

- Russell's New Hybrids**—An outstanding novelty from England, having won a Gold Medal from the Royal Horticultural Society. Huge spikes in colorings hitherto unknown in Lupines, such as rich orange, clear blues, indigo and countless bi-colors. 50c each; 3 for \$1.25; doz. \$4.50

LITHOSPERMUM (Lith-o-sper'-mum)—Rockseed

- ***purpurescens**—Long arching leafy canes which root at the tip and form new crowns, thus forming a loose leafy foil for plants liking root shade. Not to be confused with coerulea which is not hardy. 40c each; 3 for \$1.10

LAVANDULA (Lah-van'-deu-la)—Lavender

A delightful old-fashioned favorite that has never lost popularity. The dainty lavender flowers which retain their delicious fragrance when dried are greatly beloved. Give a sunny location and cut back when the bushes become straggly.

- ***Twinkle Purple**—A deep purple form on compact shapely bushes. 50c each; 3 for \$1.25
- ***vera**—The true old lavender. A profuse bloomer with fine silvery leaves and purple flowers. 50c each; 3 for \$1.25; doz. \$4.50
- ***vera rosea**—Dainty pink form. 50c each; 3 for \$1.25

One each of the 3 Lavandulas \$1.35

LEONTOPODIUM (Le-on-to-pohd'-i-um)—Edelweiss

Perhaps the most far-famed plant of the Swiss Alps, forming downy mats of silver in any well drained sunny spot that is not too dry.

- ***alpinum**—Star-like heads clothed with a dense woolly white substance. An interesting plant that always draws attention. 40c each; 3 for \$1.10

LIATRIS (Ly-ay'-tris)—Blazing Star

From a grassy tuft arise stalks clothed in lovely fragrant blossoms. Sun or shade.

- pycnostachya**—Tall rosy purple. Indescribably lovely. 45c each; 3 for \$1.15
- September Glory**—Giant spikes and huge florets of striking purple. 55c each; 3 for \$1.40
- White Spire**—Sparkling white counterpart of above. 65c each; 3 for \$1.65

One each of the 3 Liatris \$1.55

LEWISIA (Leu-is'-i-a)—Bitter Root

A group of rock plants so choice that they merit the very best spot in any rockery. Being natives of the Northwest, they are perfectly hardy anywhere, but demand perfect drainage. Plant in a soil composed of good loam, sand and stone chips or fine gravel and success is assured.

- ***columbiana rosea**—Fat little leaves make up an evergreen rosette from which spring wiry stems carrying lovely deep pink flowers. 75c each; 3 for \$2.00
- rediviva**—In the late summer and fall this little gem sends up many fat needle-like leaves forming a dense rosette. In May a great bunch of buds appear each on a separate stem which open into flowers 2" across of rich satiny texture very similar to the Cactus bloom. The color varies from pure white to deep rose-pink, the darker colors predominating. After blooming the entire plant disappears for about two months. Best planted in colonies of 6 to 12 in dry exposed position. 3 for 50c; doz. \$1.75

LINUM (Ly'-num)—Flowering Flax

Extremely showy and free flowering perennials suitable for the border or rockery in full sun. Should be cut to the ground several times each season, which insures a very long blooming period.

- ***flavum**—Fine deep green foliage and bright yellow transparent flowers. 8". 40c each; 3 for \$1.10
- ***narbonneuse**—Forms a spreading clump of dainty foliage with profusion of large sapphire blue flowers having a white eye. Flowers do not close at night as with some sorts. 12". 40c each; 3 for \$1.10

One each of the Linums 75c

MUSCARI (Mus-kar'-i)—Grape Hyacinths

Dainty spring flowering bulbs increasing rapidly to form large clumps of grassy leaves and fragrant flowers. Plant bulbs 2" deep.

- ***Heavenly Blue**—Fine deep blue. 45c doz.; 25 for 75c; 100 for \$2.75



PLATYCODON (BALLOON FLOWER)

PLATYCODON (Plat-i-koh'-don)—Balloon Flower

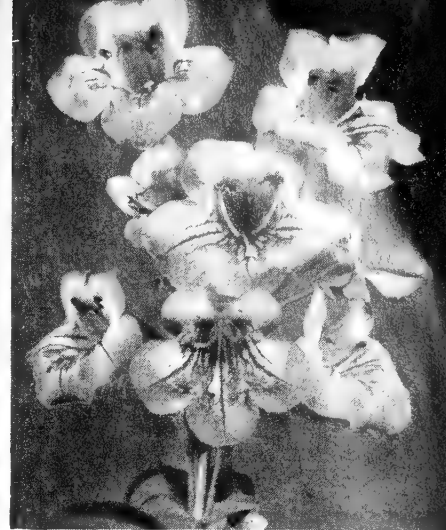
Large crepe paper-like bells blooming over a long season. Should have a well-drained position in the sunny border. 2½'.

grandiflorum—Finest blue and white mixed. 40c each; 3 for \$1.10

grandiflorum fl. pl.—One of the most outstanding new perennials in recent years. Lovely double flowers with the same fine habits of the single forms. Long lived and perfectly hardy anywhere. We can supply either blue or white at 75c each or 3 of one color for \$2.00

Shell Pink—A beautiful new pink form of this ever popular Bellflower. 50c each; 3 for \$1.25

One each of the 4 Platycodons \$2.25



PENSTEMON, LARGE FLOWERED HYBRID

MONARDA (Mon-ar'-da)—Bergamot

Attractive plants for the sunny border or in light shade. Very fragrant mint-like foliage and large heads of brilliant flowers.

- Cambridge Scarlet**—Brilliant crimson scarlet 40c each; 3 for \$1.10
- Croftway Pink**—Choice salmon pink. 50c each; 3 for \$1.25
- Purple Glory**—Extra fine purple sort. 50c each; 3 for \$1.25
- Rose Queen**—Fine deep rose. 40c each; 3 for \$1.10
- Snow Queen**—Large snowy white. 50c each; 3 for \$1.25
- Violet Queen**—Rich pure violet. 40c each; 3 for \$1.10

One each of the 6 Monardas \$2.55

NEPETA (Nep'-e-ta)—Catmint

Useful plants having silvery foliage and blooming continuously. They succeed admirably in poor stony soil and are excellent for that hot dry spot in which nothing else seems to grow.

- ***mussini**—Compact mats of silver a foot or so across covered with clouds of soft blue flowers all summer. 6". 40c each; 3 for \$1.10; doz. \$4.00

OENOTHERA (Ee-no-thee'-ra)—Evening Primrose

Plants especially valuable for the sunny well drained border or rockery. The lovely flowers open in late afternoon and persist until about noon the following day, when they close up and drop to make way for the new buds nearly ready to unfold.

- ***fyrverkeri (Illumination)**—Lovely new sort with deep golden yellow flowers from early June to August, on 15" stems. The leathery bronze foliage harmonizes beautifully with the 3" blooms. 50c each; 3 for \$1.25
- ***missouriensis**—Prostrate branches clothed with large luxuriant foliage and immense solitary golden blooms often 4" across. Blooms all summer. 45c each; 3 for \$1.15
- ***Mexicana rosea**—From a compact leafy rosette arise much branched stems 10" tall which are covered with large deep rose flowers all season. The colony is increased by underground runners. We consider it one of the very finest things in our list. 65c each; 3 for \$1.65

One each of the 3 Oenotheras \$1.45

ONOSMA (On'-os-ma)—Golden Drops

A delightful plant for the higher part of the rockery or wall garden. Enjoys full sun and light well drained soil.

- ***tauricum**—Forming a compact mass of rough hairy foliage 12" across above which the large heads of fragrant golden bells nod gaily in the sun. 55c each; 3 for \$1.35

PIMELIA (Py-meel'-e-a)—New Zealand Daphne

coartica—A very rare and lovely little prostrate shrub carpeting the ground with sturdy branches covered with glaucous foliage. Masses of fragrant filmy white flowers in the spring and tiny waxen white berries in the fall. Perfectly hardy, forming mats 2' across and 1" tall. 75c each; 3 for \$2.00; doz. \$6.50

PENSTEMON (Pen'-ste-mon)—Beard Tongue

A group of such importance that every gardener should include a goodly collection in the framework of his planting. They are of easiest culture, perfectly hardy and permanent, and for brilliance in garden display or usefulness for cutting they are in the front ranks. The dwarfier sorts are mostly true evergreen shrubs and natural-born rockery plants, coming from nature's own rockeries. Our visitors invariably buy Penstemons so our enthusiasm is also shared by those who see them. Sun loving plants for rather poor sandy soil. No plant gives more and asks less than these lovely Penstemon.

- ***barretae**—Thick fleshy leaves on tidy 6" bushlets. Brilliant vermilion-rose flowers. 55c each; 3 for \$1.40
- ***crandalli**—Lovely creeper. The soft evergreen needle-like foliage hugs the ground closely and the lovely sky blue flowers come in clouds on 2" stems. Strong grower forming broad mats. 55c each; 3 for \$1.40
- ***fruticosa**—Shrubby evergreen. Lavender. 45c each; 3 for \$1.15
- ***fruticosa azurea**—Lovely soft blue. 50c each; 3 for \$1.25
- ***glaber**—Sturdy 8" plants with glaucous foliage and large flowers from deep pink to blue. 40c each; 3 for \$1.10
- ***heterophyllus**—Handsome flowers of clear metallic blue on sturdy upright branches. 10". 45c each; 3 for \$1.15
- ***Six Hill Hybrid**—We are very glad to be able once more to offer this lovely hybrid. A stronger growing, larger flowered form of rupicola with deep scarlet flowers. 75c each

One each of the 7 Penstemon \$3.45

**PENSTEMON—Barbatus hybrida
Giant Beard Tongue**

From broad mats of glossy evergreen leaves this fine ever-bloomer sends up 3' stalks of richly colored flowers, from May to November.

- Mulberry**—Very fine large mulberry-purple that is very rare. 55c each; 3 for \$1.40
 - Pink Beauty**—Bright shell pink greatly admired for clearness of color. 55c each; 3 for \$1.40
 - Ruby Gem**—Fine large deep ruby-red. 55c each; 3 for \$1.40
- One each of the 3 Barbatus Hybrids \$1.55

PENSTEMON—New Large Flowered Hybrids

No hardy perennial can surpass the brilliant display made from early summer till frost by this strain of easily grown, free-flowering Penstemon. The large gloxinia-like blooms are carried gracefully on 2' stems, with several stalks giving color throughout the season. Beside its usefulness in the perennial border, the flowers are excellent cut, lasting a week or more in water.

- Firebird**—Fiery red; from Switzerland. 55c each; 3 for \$1.35
 - Garnet**—Rich garnet red original of the strain. 55c each; 3 for \$1.35
 - Ruby King**—One of the showiest of new perennial plants. The 18 to 24" spikes bear myriads of rich, brilliant, ruby red trumpet-shaped flowers which are larger than those of the above types. 85c each; 3 for \$2.25
- One each of the Large Flowered Hybrids \$1.80

PHLOX (Flox) *decussata*—Hardy Phlox

One of the most effective plants for the hardy border, producing splurges of brilliant color over a long period. Plant in a sunny position in well drained soil and fertilize well.

- Blue Boy**—The best dark blue yet developed. 45c each; 3 for \$1.15
- Border Queen**—Enormous trusses of deep watermelon pink. 40c each; 3 for \$1.10
- Charles Curtis**—The most brilliant Phlox we have grown. Intense orange scarlet. 55c each; 3 for \$1.40
- Chesapeake**—An excellent new dwarf Phlox with immense trusses of brilliant salmon rose. 55c each; 3 for \$1.40
- Daily Sketch**—Huge salmon pink with carmine eye. 40c each; 3 for \$1.10
- Ethel Pritchard**—Finest powder blue. 50c each; 3 for \$1.25
- Hauptman Koehl**—Very fine large deep red. A strong grower and quite disease resistant. 55c each; 3 for \$1.40
- Leo Schlagater**—Intense bright scarlet. One of the world's finest Phlox. 55c each; 3 for \$1.40
- Lillian**—Glorious cameo-pink with bluish eye. One of the very best. 50c each; 3 for \$1.25
- Mary Louise**—Glorious pure snow-white. Strong and fine. 50c each; 3 for \$1.25
- Milly Von Hoboken**—One of the largest, with immense trusses of bright rose pink with a deeper eye. 50c each; 3 for \$1.25
- P. D. Williams**—Enormous florets of apple-blossom pink. 50c each; 3 for \$1.25
- Prime Minister**—A fine white with clear red eye. Very showy. 45c each; 3 for \$1.25
- Purple Sweetheart**—New red-purple with deeper eye. 50c each; 3 for \$1.25
- Pinkette**—Very large florets of delicate apple-blossom pink. The little tube that attaches the flower to the stem, however, is a very deep pink giving the plant an unusually charming effect. 65c each
- Rosencavalier**—Very tall large flowered bright rose. An excellent Phlox. 60c each; 3 for \$1.55
- Rosy Blue**—An excellent new color. Soft powder blue with a pink undertone. Quite unlike anything we have tried before. 65c each
- Salmon Glow**—Flame pink and salmon. 45c each; 3 for \$1.15
- San Antone**—Deep plum-red that is far ahead of all others of this color. 55c each; 3 for \$1.40
- Starlight**—Fine deep violet with decided white eye. Large flowers and strong grower. 50c each; 3 for \$1.25
- Silverton**—Immense silvery lilac with contrasting eye. One of the best. 55c each; 3 for \$1.40
- World Peace**—A new white that is the largest and finest to date. Later than other whites, it helps to extend the season of this popular group. 65c each; 3 for \$1.65
- One each of the 22 Phlox \$10.50

PHLOX SUBULATA—Moss Pink

Fine evergreen creepers. Sheets of bloom in early spring and scattered flowers all summer. Full sun.

- ***alba**—Large clear white. 40c each; 3 for \$1.10
- ***Alexander's Giant**—Exceptionally large blooms of deep rose with a distinct eye. Very fine. 55c each; 3 for \$1.40
- ***Alexander's Pink**—A very fine new pink of compact habit. 50c each; 3 for \$1.25
- ***atrolilacina**—Deep, rich blue. 40c each; 3 for \$1.10
- ***Blue Hills**—Fine deep blue. 40c each; 3 for \$1.10
- ***Bridesmaid**—Large white, red eye. 40c each; 3 for \$1.10
- ***Brilliant**—Deep carmine-red. 40c each; 3 for \$1.10
- ***Brittoni alba**—Lovely white star-shaped flowers. New. 50c each; 3 for \$1.25
- ***Camla**—Large, pure pink. 50c each
- ***Camla alba**—New large white. 50c each
- ***Dixie Brilliant**—A little taller than the subulatas with unusually large rosy red flowers fully 1" across. 50c each; 3 for \$1.25

- ***Emerald Cushion**—Emerald green cushions and large full-petaled flowers of lovely pink. 45c each; 3 for \$1.15
- ***Emerald Cushion, New Blue**—A blue form of the above. 50c each; 3 for \$1.25
- ***Jersey Blush**—Large flowered blush pink. 55c each; 3 for \$1.40
- ***Katherine Freeman**—Very fine pink. Vigorous, long blooming. One of the best. 75c each; 3 for \$2.00
- ***Orchid Lady**—Deep orchid with a distinct eye of darker shade. Lovely. 55c each; 3 for \$1.40
- ***Sky Blue**—The finest new blue. 55c each; 3 for \$1.40

One each of the 17 Phlox *Subulata* \$7.75

PHLOX—Early Flowering

These are a cross between the *Decussata* and our native sorts and bloom from early summer until frost thus lengthening the season of this popular flower considerably. 15".

- Miss Lingard**—A grand white variety that is popular because of its continuous bloom from May to October. 50c each; 3 for \$1.25; doz. \$4.50
- Rosalinde**—A glorious shade of amaranth-pink blooming freely from June until freezing weather. The longest season of any Phlox. A neat grower of medium height. 40c each; 3 for \$1.10; doz. \$3.50
- One each of the early blooming Phlox 75c

PHLOX OF VARIOUS SPECIES

- ***amoena**—Evergreen tufts with brilliant salmon pink flowers in May. 40c each; 3 for \$1.10; doz. \$4.00
- ***divaricata canadensis**—Lovely fragrant blue flowers on 6" stems. Likes some shade. April and May. 35c each; 3 for \$1.00; doz. \$3.50
- ***stolonifera, Blue Ridge**—A fine creeper for sun or shade forming large mats of shiny leaves with handsome flower heads in June. We offer here the rare blue flowered form. 4". 65c each; 3 for \$1.65
- One each of the Phlox Species \$1.25

PAEONIAS—Peonies

Peonies will be shipped in the fall only but may be included with spring orders and shipment will be made at planting time. It is very important that Peony roots be planted with eyes not more than 2" below ground level. The following are the only sorts available for sale this season.

- Cherry Hill**—Brilliant tall-growing red. Very double and long lasting. \$1.50 each
- Delicatissima**—Very early dainty pink changing to blush white with age. \$1.50 each
- Edulis Superba**—This is the most popular flower grown for Memorial Day. A glorious early Peony, fully double and the finest shade of bright pink. It is as fragrant as a rose and grows 3' tall, making it invaluable as a cut flower at the season when most urgently needed. An unusually strong, vigorous grower. \$1.00 each; 3 for \$2.50; doz. \$8.00
- Festiva Maxima**—Large full rose type of paper white with crimson flecks. \$1.25 each
- Kelway's Glorious**—Immense blooms of silken texture and snowy whiteness. \$2.50 each
- Karl Rosenfield**—Rich, deep, brilliant red. Vigorous free flowering. \$1.50 each
- Longfellow**—Bright crimson. Large rose type and a sure bloomer. \$1.75 each
- Mons. Jules Elie**—Huge blooms of pure bright pink. Petals incurved like a hot-house Chrysanthemum. \$1.50 each
- Mme. Jules Desert**—Enormous blooms of creamy buff. \$2.50 each
- officinalis rubra**—The grand old red Memorial Day Peony. \$1.00 each
- Primevere**—Cream shaded with sulphur and yellow. \$2.00 each
- Sarah Bernhardt**—Apple blossom pink, tipped silver. Delicately scented. \$1.75 each

One each of the 12 Peonies \$18.00

PACHYSANDRA (Pak-i-san'-dra)— Japanese Spurge

***terminalis**—An extremely fine plant used extensively for ground cover in either sun or shade. Will grow under trees, shrubs, evergreens, on banks or along driveways. Excellent thick, waxy evergreen foliage. 4".

40c each; 3 for \$1.10; doz. \$4.00

PARDANTHUS (Par-danth'-us)—Blackberry Lily

Perfectly hardy lily-like plant of easy culture. Planted in groups in the sunny border they form a charming picture with slender strong stems 3' tall branching at the top and forming large heads of gay flowers.

chinensis (syn. balamcanda)—Orange colored flowers spotted black and handsome seed pods that resemble large blackberries. These are excellent in the winter bouquet.

45c each; 3 for \$1.15; doz. \$4.25

PAPAVER (Pa-pay'-ver)—Poppy

***nudicaule**—Lovely Iceland Poppies which send up sturdy stems 18" tall with glorious satiny flowers for months on end. Keeps beautifully as a cut flower.

Cardinal—Bright cardinal red.

Emperor—Immense deep orange.

Empress—Beautifully formed flowers of salmon-rose to creamy pink, ruffled and crinkled.

Yellow Emperor—Bright golden yellow.

40c each; 3 of one kind \$1.10

One each of the 4 Iceland Poppies \$1.45

PULMONARIA (Pul-moh-nair'-i-a)—Lungwort

Noteworthy perennials adapted for the shady border or rockery. Should be grown in groups and reset every three or four years. They are especially lovely under deciduous trees and shrubs or along the waterside.

***angustifolia**—This variety has deep green leaves with flowers of brilliant gentian blue reminiscent of Blue Bells.

50c each; 3 for \$1.25

***lutea**—A new plant to American gardens, having very heavy, crinkled green leaves and masses of soft yellow flowers. Very strong grower and a prodigious bloomer.

75c each; 3 for \$2.00

***Salmon Glow**—A new plant having lush green foliage and brilliant coral red flowers. A distinctive novelty.

75c each; 3 for \$2.00

***saccharata maculata**—Large deep green leaves heavily spotted with silver and heads of mertensia-like bells in drooping clusters of pink and blue in early spring. The highly ornamental leaves persist all season. A fine plant for a cool spot.

45c each; 3 for \$1.15

***saccharata, Mrs. Moon**—A new variety having more silver on the leaves and larger flowers showing greater contrast in the pink and blue heads.

65c each; 3 for \$1.65

One each of the 5 Pulmonarias \$2.85



POTENTILLA MISS WILMOTT

POTENTILLA (Poh-ten-til'-la)—Cinquefoil

A very interesting family having strawberry-like leaves and gay flowers. If grown in light soil in a sunny situation with reasonable moisture they will bloom practically all summer.

***cinerea**—A dainty evergreen creeper with lovely golden flowers on thread-like 2" stems. 40c each; 3 for \$1.10

***Miss Wilmott**—A brilliant salmon pink growing 15" tall. This one is not only a fine garden subject but also a lovely cut flower. 50c each; 3 for \$1.25; doz. \$4.50

***nepalensis**—Lovely deep orange flowers with reddish eye. 15". 45c each; 3 for \$1.15

***nitida**—Soft tufts of silvery grey foliage with pink flowers. Choice. 65c each; 3 for \$1.60

***warrensi**—Large heads of buttercup yellow all summer. 15". 45c each; 3 for \$1.15

One each of the 5 Potentillas \$2.25

PLUMBAGO (Plum-ba'-go)—Leadwort

***larpentae (syn. Ceratostigma plumbaginoides)**—Lovely low growing plant with small, leathery heart-shaped leaves of bronzy-green covered with deep peacock blue flowers during the late summer and fall. Sun or light shade. 10".

50c each; 3 for \$1.25; doz. \$4.50

POLYGONUM (Po-lig'-o-num)—Solomon's Seal

A dainty family for the rockery or front row border. Any good garden soil suits them if there is plenty of moisture.

***affine**—Tufted pale green leaves and graceful spikes of rich rose-colored flowers which change to a deep red as they fade, lighting up their surroundings for weeks in late summer and fall. 50c each; 3 for \$1.25

compactum—Masses of fluffy heads of snowy flowers on compact 2' plants. 45c each; 3 for \$1.15

***reynoutria**—A strong growing ground cover for unsightly spots. Spreads quite well, growing 1' tall with handsome spikes of fragrant red flowers and attractive bronzy foliage. 55c each; 3 for \$1.40

One each of the 3 Polygonums \$1.35

POLEMONIUM (Pol-i-moh'-ni-um)—Jacob's Ladder

Fine subjects for light well drained soil having graceful pinnate leaves and fragrant flowers in loose heads. The tufted fern-like foliage is effective all season. Sun or light shade.

***Blue Pearl**—A lovely clear blue, freely produced during April, so freely as to completely hide the dwarf bushy plants. Exquisite for rockery or border. 55c each; 3 for \$1.40

***reptans improved**—Dwarf bushy plant not over 10" tall. Flowers an exquisite shade of soft sky blue. In groups they form a shimmering sea of blue that is hard to duplicate. 45c each; 3 for \$1.15; doz. \$4.25

richardsoni—Splendid clumps of lovely foliage and rich blue flowers with bunches of golden anthers. 18". 40c each; 3 for \$1.10

richardsoni alba—Glorious snow white form with golden anthers. 45c each; 3 for \$1.15

One each of the 4 Polemoniums \$1.70

PHYSOSTEGIA (Fy-soh-steg'-i-a) - False Dragon's Head

Handsome plants for the sunny border or wild garden. Should be divided and re-set every three years to insure shapely clumps.

Summer Glow—Towering stems often exceeding 4', terminating in colorful spikes 1½' in length of rosy crimson. This new plant blooms in August when color is very scarce in the garden. 50c each; 3 for \$1.25

Summer Snow—A glorious pure white form of the above. 50c each; 3 for \$1.25; doz. \$4.50

Rosy Spire—Similar to the above but somewhat more dwarf and blooming in September. 50c each; 3 for \$1.25

One each of the Physostegias \$1.35



PHYSOSTEGIA



PRIMULA OFFICINALIS



PRIMULA JULIAE HYBRIDS

PYRETHRUM (Py-ree'-thrum)—Painted Daisy

Pyrethrums have been called the spring blooming Chrysanthemum and we think that the newer sorts are a very close rival of that popular flower. As a cut flower for Memorial Day they certainly have no superior. If not allowed to seed there will be scattered blooms all summer, although these as well as the first flowers after transplanting, are apt to be single. All are propagated vegetatively and are guaranteed true to name.

PLEASE NOTE—Due to scarcity of stock Pyrethrum will be shipped only in the fall. They may, however, be included with spring orders and shipment will be made in September.

Corillion—A new single salmon pink that is a unique color break in this popular flower. Most brilliant of all pinks.

\$1.25 each

Crimson Giant—The very finest large flowered crimson. Broad velvety petals surround a lovely golden disk. Single.

\$1.25 each

Genghis Khan—A very double bright red that is very popular for cut flower arrangements.

75c each; 3 for \$2.00

Lady Dawn—Lovely soft pink. Very double.

75c each; 3 for \$2.00

Lady Garnet—Vigorous deep rose-pink that is a most persistent bloomer. Double.

75c each; 3 for \$2.00

Orchid—The nearest to true orchid we have seen. Not large but very double and profuse.

85c each; 3 for \$2.15

Miami Queen—Fine deep pink outer petals with a creamy white crest.

50c each; 3 for \$1.25

Pasadena—This is the finest Painted Daisy that we have ever seen. It is a very large, very double silvery pink. While the color is light it has the unusual luster of damask silk and stands out among our large collection of fine imported Daisies.

\$3.50 each

Pink Bouquet—A very large flower of bright, clear pink. The completely double center is touched with white at tips of the crest.

\$1.00 each; 3 for \$2.50

Rose Glory—Wonderfully compact solid double of bright rose. A great favorite here.

75c each; 3 for \$2.00

Rose Mist—Lovely rose-carmine petals with double crested rose center. Very colorful.

\$1.50 each

Silver Tips—Very deep old rose generously tipped with white. An outstanding double variety.

\$1.50 each

The Pearl—A fine medium sized pure white. Very double and a true pompon.

85c each; 3 for \$2.15

One each of the Pyrethrum (value \$15.20) \$14.00

PHYGELIUS (Fy-gee'-li-us)—Cape Fuchsia

capensis—We cannot understand why this plant should be so little known. It is without question one of the very finest of all hardy perennials. The shapely 3' plants are covered with intense scarlet, tubular shaped flowers from July to September. One of the brightest of all hardy plants. Quite shrubby in mild climates. With us it must come from the ground each year, but entirely hardy anywhere. Full sun or light shade.

85c each; 3 for \$2.15

PRIMULA (Prim'-eu-la)—Primrose

All the Primroses offered in this list should have a cool shaded spot with plenty of leaf mold or peat moss in the soil. Work bone meal around the plants and mulch with well rotted manure in the fall for best results.

***cashmeriana**—Globular heads. Lavender. **40c each; 3 for \$1.10**

***cortusoides**—Deep rose, delightful. **40c each; 3 for \$1.10**

***Juliae**—Starry claret colored flowers. **40c each; 3 for \$1.10**

***Juliae alba**—An exquisite white form of Juliae. **65c each**

***officinalis**—Brilliantly colored blooms in countless variations of color. The flowers are tubular shaped in very large heads. One of the finest for landscape effect.

40c each; 3 for \$1.10; doz. \$4.00

One each of the above Primroses \$2.05

PRIMULA—Juliae Hybrids

In all the spring garden there is nothing, in our estimation, that makes quite the brilliant splash of color as does this fine group of plants. The beautiful evergreen foliage is almost completely hidden by the masses of flowers that appear as soon as the snow leaves us. They are as hardy as a Lilac bush and increase with unbelievable rapidity.

They are the result of crosses of the hardy species Juliae and various other forms of Primulas. Therefore, some are acaulis type and others polyantha, but all are utterly lovely. Some even give us a good show again in the fall. No garden, large or small, should be without a good collection of this impressive family. Grow them in that shady spot where nothing seems to do well.

***Baker's Variety**—Fine cherry rose. **75c each**

***Bright Eyes**—Very large deep rose pink. A heavy grower of excellent habits. **\$1.00 each**

***Dorothy**—Dainty little Polyantha form crossed with the Cowslip. Soft yellow. **65c each; 3 for \$1.65**

***Helena**—Burgundy red. Very prolific. **45c each; 3 for \$1.15**

***Lakewood**—Bronzy foliage and lovely large burgundy blossoms. **55c each; 3 for \$1.35**

***Mrs. King**—Dainty mauve pink on unusually vigorous plants. **75c each**

***Nettie P. Gale**—Very free flowering snow white turning a delicate pink with age. **\$1.00 each**

***Primrose Lodge**—Deep crimson flowers in large clusters. A fine Polyantha hybrid. **50c each; 3 for \$1.25**

***Snow White**—The very finest white Primrose we have ever seen. The flowers almost completely hide the foliage. **\$1.50 each**

***Springtime**—Extra large flowers of dainty lilac-pink. **75c each**

***Wanda**—Especially fine deep violet. **50c each; 3 for \$1.25**

One each of the 11 Juliae Hybrids \$7.50

PRIMULA—Double Acaulis

Fully double blossoms in amazing profusion.

***Marie Crousse**—A very lovely French variety with large perfectly formed double flowers of rich burgundy. A vigorous and robust performer that is always admired.

\$1.25 each; 3 for \$3.25



POLYANTHUS PRIMROSES



PRIMULA CASHMERIANA (Page 24)

PRIMULA—Polyantha

These new Polyanthas will throw up stems from 9 to 12" tall surmounted by great heads of immense blooms. Not to be confused with older varieties offered under this heading.

***Aunt Jemima Seedlings**—Aunt Jemima is a bright black red of immense size. Vigorous and floriferous. The seedlings come nearly true and are all very lovely.

45c each; 3 for \$1.15

***Gold Laced**—An old favorite with lovely golden brown flowers, margined and laced with pure gold.

55c each; 3 for \$1.40

***Harvest Yellows**—New large flowered Polyantha; palest yellow to deep golden orange.

40c each; 3 for \$1.10; doz. \$4.00

***Indian Reds**—New large flowered Polyantha in every conceivable shade of copper and red.

40c each; 3 for \$1.10; doz. \$4.00

***Marine Blues**—Grown from finest blue Polyanthas, these will give flowers from deep cobalt blue to purple, plum, and mulberry.

50c each; 3 for \$1.25; doz. \$4.50

***Ozon**—A wonderfully fine deep blue Polyantha grown from division. This plant has immense florets of real cobalt blue. Vigorous grower.

75c each; 3 for \$2.00

***Colossal Giants**—A glorious mixture of all the finest Polyantha types ranging from pure white to deep orange and from blue to red and purple. Immense florets on strong sturdy stems.

40c each; 3 for \$1.10; doz. \$4.00

One each of the above 7 Primroses \$3.15

PRIMULA AURICULA—Evergreen Primrose

In the Auricula we have a primrose that may be grown with no protection whatever in any part of the country. The broad fleshy leaves are evergreen and may often be seen encased in ice in our beds but when the ice is gone they are as firm as ever. In some varieties the leaves are coated with a silvery bloom that adds greatly to their charm. The sweetly scented flowers come in a wide range of colors. They bloom both spring and fall, asking only a rich, moist soil in sun or shade. A situation affording light shade from the noon-day sun suits them best. We are offering a few named sorts from our large collection of imported varieties, grown entirely from division and guaranteed true to name.

***Candlelight**—Soft yellow and burnished copper. An appealing soft-toned blend.

75c each; 3 for \$2.00

***Dainty Mary**—Foliage large, toothed and crinkled. Flowers a deep blue with an eye of pale blue heavily coated with powder. Very choice.

\$1.25 each; 3 for \$3.25

***Garnet Beauty**—Very large blooms of fine deep garnet. Rich and lustrous coloring and very free flowering.

\$1.00 each; 3 for \$2.50



PRIMULA AURICULA

***Golden Lady**—A fine golden yellow with pure white mealy throat.

\$1.50 each

***Indianola**—A most unusual reddish-copper. Very large florets and unusually free bloomer on vigorous strong plants. This is the earliest re-bloomer we have; always in bloom again by September 15.

\$1.00 each; 3 for \$2.50

***Quaker Lady**—An early profuse bloomer having pale bluish-fawn colored flowers. Like the faded velvet flowers upon our Grandmothers' bonnets.

50c each; 3 for \$1.25

***Royal Red**—This is not red at all with us but a very fine reddish purple. Immense flowers in unusually large heads. Excellent.

\$1.50 each

***Royal Robe**—A most desirable sort with a rich blue-purple band encircling a golden disc.

\$1.00 each; 3 for \$2.50

***Violetta**—Vigorous grower with fine flowers of deep blue-violet.

75c each; 3 for \$2.00

***Tapestry**—A medley of copper, blue and rose with lovely light border. This has always been a favorite with our visitors and is a personal pet here.

\$2.50 each

One each of the 10 Named Auriculas \$10.25

***Mixed**—A fine mixture grown from seed of named varieties showing a wide range of color.

40c each; 3 for \$1.00; doz. \$3.50



ROSA ROULETTI

SCABIOSA

ROSA (Ro-sa)—Rose

Very hardy little miniature roses for the front row border or rockery. Perfectly double and everblooming, growing 6" to 10" tall. Plant in full sun.

- ***Cameo**—Lovely apple-blossom pink that is really charming. 85c each; 3 for \$2.35
 - ***Juliette**—A new miniature Gruss an Teplitz. A prodigious bloomer. Flowers an inch or more across of brilliant crimson. One of the very finest of recent novelties. \$1.00 each; 3 for \$2.50
 - ***Oakington Ruby**—Tiny double blooms of ruby carmine. 65c each; 3 for \$1.65
 - ***Pixie Pearl**—Glorious snow white flowers of satiny texture, showing just a tinge of pink when in the bud. Unexcelled for corsages. 75c each; 3 for \$2.00
 - ***pumila**—Fine rose-pink of very restrained habit. 75c each; 3 for \$2.00
 - ***rouletti**—Fully double deep pink flowers. 65c each; 3 for \$1.65
- One each of the 6 Miniature Roses \$4.35

RUDBECKIA (Rud-bek'-i-a)—Coneflower

Showy plants for the sunny border. Daisy-like flowers with a bronzy cone-shaped center.

- The King**—Huge rosy purple. 4'. 65c each; 3 for \$1.65
 - White Lustre**—New pure white. 3'. 65c each; 3 for \$1.65
- One each of the 2 Rudbeckias \$1.15

SALVIA (Sal'-vi-a)—Meadow Sage

A group of showy plants for the background blooming profusely in late summer and fall. Should have full sun for best results.

- azurea**—Long willowy stalks clothed in slender leaves and in late August terminating in a 12" spire of lovely bright blue flowers which keep for several days when cut. 6'. 40c each; 3 for \$1.10; doz. \$4.00
 - azura alba**—A novel white form of the above. 45c each; 3 for \$1.10
 - azurea pitcheri**—Similar to above but having flowers of very deep gentian-blue and blooming a little later. 45c each; 3 for \$1.15; doz. \$4.25
 - officinalis (Common Sage)**—An attractive shrub for the perennial border which not only has attractive purple flowers but furnishes the leaves used extensively for seasoning. 45c each; 3 for \$1.15
 - virgata nemorosa**—A very showy and effective border plant growing about 2' tall with deep blue flowers from May to October. Neat compact habit. 45c each; 3 for \$1.15; doz. \$4.25
- One each of the 5 Salvias \$2.05

SCABIOSA (Ska-be-oh'-sa)—Pincushion Flower

Very hardy plants for sunny border furnishing an abundance of very long stemmed cut flowers.

Blue Snowflake—A novelty of unusual merit having flowers of exceptional size and substance. Immense soft blue with delicate pink anthers. True stock from division.

- caucasica alba**—Fine pure white. 85c each; 3 for \$2.25
45c each; 3 for \$1.15
 - Issac House Hybrids**—Finest deep blue. 45c each; 3 for \$1.15
 - ***parnassi (Syn. Pteroccephalus parnassi)**—Lovely mounds of beautiful grey-green foliage and large mauve-pink flowers on 3" stems. An attractive long-lived plant. Sun. 55c each; 3 for \$1.40
 - pennsylvanica (syn. Cephalaria tatarica)**—Large golden yellow flowers quite similar to the above but borne on branching plants 6' to 8' tall. A good border plant. 40c each; 3 for \$1.10
- One each of the 5 Scabiosas \$2.50

SEDUM (See'-dum)—Stonecrop

Interesting fleshy leaved plants for the rockery. Full sun and poor soil suit them best.

- ***anacampseros**—Striking silvered serpentine foliage and purple flowers. 40c each; 3 for \$1.10
 - ***Asiaticum Wallichianum**—Fine erect growing sort with handsome heads of orange-yellow flowers. 12". 40c each; 3 for \$1.10
 - ***Cape Blanco**—Very rare form, much branched with silvery white, thick, spatulate leaves. 50c each; 3 for \$1.25
 - ***cristatum**—Blue-green tufts which flatten out at the tips in a cocks-comb like formation. Yellow flowers. 40c each; 3 for \$1.10
 - ***ewersi**—Lovely blue-green little shrub with fine pink flowers. 40c each; 3 for \$1.10
 - ***globosum (Old Man Bones)**—Interesting globular leaved sort. 40c each; 3 for \$1.10
 - ***kamtschaticum**—A mat forming type with lovely deep green scalloped leaves and yellow flowers. 40c each; 3 for \$1.10
 - ***kamtschaticum variegatum**—Fine variegated green and white. 40c each; 3 for \$1.10
 - ***middendorffianum**—Choice and interesting with dainty branches and serrated leaves of rich bronzy-red. 40c each
 - ***pruinatum forsterianum**—Masses of silver-blue spruce-like branches. 3". 40c each; 3 for \$1.10
 - ***siboldi**—Thick blue-green leaves with rich pink edging resembling pieces of broken china. Pink flowers. 50c each; 3 for \$1.25
 - ***spectabile brilliant**—Bold heads of deep pink on sturdy succulent 18" stalks. 40c each; 3 for \$1.10
 - ***spectabile rubifolium**—Red leaved form with cream colored flowers. 40c each; 3 for \$1.10
 - ***spectabile variegatum**—Green and white foliage and deep cream colored flowers. 40c each; 3 for \$1.10
 - ***stahli**—A lovely deep green mossy type that colors a lovely red in autumn. Yellow flowers. 1". 40c each; 3 for \$1.10
 - ***stoloniferum**—Fine evergreen creeper. Pink flowers. 40c each; 3 for \$1.10
 - ***stoloniferum coccineum (Dragon's Blood)**—Crimson flowers and brilliant winter foliage. Very fine. 45c each; 3 for \$1.15
 - ***telephium**—Thick, succulent leaves and rose purple flowers. 18". 40c each; 3 for \$1.10
- One each of the 18 Sedums \$6.85
- SANTOLINA (San-to-ly'-na)—Ground Cypress**
- Shrubby perennials with aromatic foliage suitable for a sunny, well drained position in the border or rockery. Should be grown in masses.
- ***incana**—Lovely finely cut silver-white foliage naturally forming a shapely little mound 10" tall and as broad. A fine subject for the rockery or for edging purposes. 40c each; 3 for \$1.10; doz. \$4.00
 - ***verdissima**—A lovely deep green counterpart to the above. 40c each; 3 for \$1.10; doz. \$4.00
- One each of the 2 Santolinas 75c

SHASTA DAISY—See Chrysanthemum Maximum

SAXIFRAGA MEGASEA (Bergenia)

Very effective tropical appearance. Large glossy leaves from a creeping stalk turning brilliant crimson in early fall and persisting throughout the winter. The immense heads of drooping bell-shaped flowers are borne on heavy red stems 18" tall, and bloom over a long period. May and June. Full sun or light shade.

- ***cordifolia**—Large heads of pink flowers very early.
- ***crassifolia**—Drooping masses of rose-pink flowers.
- ***ligulata leichtlini**—Large crinkled leaves and fine heads of deep rose colored flowers.
- ***purpurascens**—A little taller with deep reddish purple flowers.

45c each; 3 of one kind for \$1.15
One each of the 4 Saxifraga Megasea \$1.65

SAXIFRAGA (Sax-a-fra'-ga)—Rockfoil

- ***caespitosa**—Dense mossy grower with dainty white flowers. Sun. 4". 40c each; 3 for \$1.10
 - ***McNabiana**—Heavily encrusted silvery rosettes with large heads of white flowers dotted with red. 40c each; 3 for \$1.10; doz. \$4.00
 - ***sarmentosa**—Marbled leaves of red and silver and showers of dainty pink flowers. Full shade. 8". 45c each; 3 for \$1.15
 - ***umbrosa (London Pride)**—Dark glossy green rosettes and pink flowers in large airy heads. 10". Shade. 50c each; 3 for \$1.25
 - ***umbrosa primuloides**—A tiny form with flower stem not over 5" tall. Shade. 50c each; 3 for \$1.25
- One each of the 5 Saxifraga species \$2.00

SEMPERVIVUM (Sem-per-vy'-vum)—

Hen and Chickens

Fascinating group for the rockery. Happy anywhere in the sun.

- ***Alpha**—Hairy rosettes of fine rosy red. 40c each; 3 for \$1.10
 - ***arachnoideum**—Tiny rosettes of pale green connected by fine silvery web-like hairs. 40c each; 3 for \$1.10
 - ***arachnoideum rubrum**—Red tinted rosettes. 40c each; 3 for \$1.10
 - ***atropurpureum**—Very large dark purple rosettes. 40c each
 - ***Beta**—Fine coppery rosettes covered with soft white hair. 40c each; 3 for \$1.10
 - ***brauni**—Green with red-brown margin. 40c each; 3 for \$1.10
 - ***comolli**—A beauty with red flowers. 40c each; 3 for \$1.10
 - ***Compt de Congal**—Fine large bronzy sort. 40c each; 3 for \$1.10
 - ***doellianum**—Wooly grey rosettes. 40c each; 3 for \$1.10
 - ***Emerald Giant**—Huge emerald green 8" across. 50c each
 - ***Gamma**—Coppery red with hairy tips. 40c each; 3 for \$1.10
 - ***glaucum**—Large rosettes tipped with red. 40c each; 3 for \$1.10
 - ***longbardum**—Broad pointed leaves tipped with red. Choice. 40c each; 3 for \$1.10
 - ***mettenianum**—4" rosettes of bronzy red. 40c each; 3 for \$1.10
 - ***modgeri**—Medium sized rosettes completely covered with white down. 45c each; 3 for \$1.15
 - ***purpurea acutifolia**—Pointed purple leaves. 40c each; 3 for \$1.10
 - ***regina**—Emerald green tipped red. 40c each; 3 for \$1.10
 - ***rubicundum**—Large pale green tipped red and covered with fine hair. 45c each; 3 for \$1.15
 - ***rubicundum, Lowes Var.**—Wooly grey, edged with red. 45c each; 3 for \$1.15
 - ***Schleham rubicundum**—Medium sized bright red. 50c each; 3 for \$1.25
 - ***tectorum**—Old-fashioned hen and chickens 40c each
 - ***violaceum**—Very highly colored purple sort. 40c each
 - ***verlotti**—Pale green tinged with red. 40c each; 3 for \$1.10
 - ***Westchester Seedling**—Flannel-like leaves of blue grey touched with bronze. 50c each
- One each of the 24 Sempervivums \$9.25



SANGUINARIA MULTIPLEX

SANGUINARIA (San-gui-nair'-i-a)—Blood Root

A choice little native for a shady spot delighting in cool moist leaf mold.

- ***canadensis**—Glistening pure white, waxy flowers, an inch across on 4" stems in very early spring followed by large glaucous blue-green leaves. 40c each; 3 for \$1.10
- ***canadensis multiplex**—This is the rare double form which has been grown from a single plant found years ago in the Michigan woods. The lovely waxy flowers are fully double and should not be confused with the semi-double forms sometimes offered. \$1.50 each

One each of the Sanguinarias \$1.80

SILENE (Sy-lee'-nee)—Indian Pinks

An interesting and useful group of plants for moist well drained soil in the rockery, wall or border. All are profuse bloomers and of restrained habit, making them worthy of a choice spot.

- ***alpestris**—Closely matted little evergreens with 4" naked stems and airy little flowers of purest white. 40c each; 3 for \$1.10
- ***alpestris fl. pl.**—Very rare double form of the above. 45c each; 3 for \$1.15
- ***maritima**—A very choice plant for carpeting bulb beds, growing in rockeries and wall gardens, etc. Handsome glaucous foliage and lovely white flowers continuously all season. 40c each; 3 for \$1.10; doz. \$4.00
- ***maritima rosea**—Dainty pink form of above. 40c each; 3 for \$1.10; doz. \$4.00

One each of the 4 Silenes \$1.45

SOLIDAGO (Sol-i-day'-go)—Golden Rod

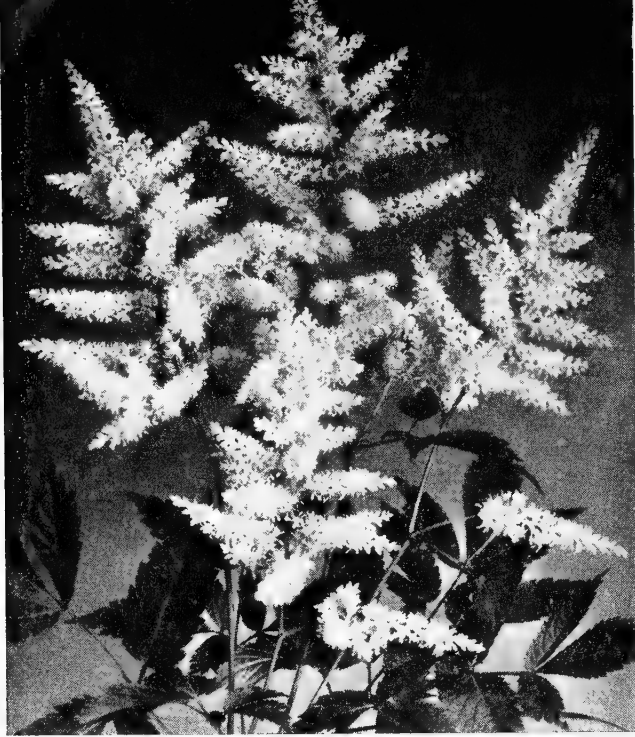
Well known perennials of easiest culture for sun or shade. Will grow with very little moisture but repay us with larger and deeper colored flowers if given some attention.

- vigaurea, Golden Wings**—A new stately sort growing from 6' to 8' tall. The flower head itself is made up of many branched wing-like sprays forming heads 2' across. A superb border specimen. 45c each; 3 for \$1.15; doz. \$4.25

STATICE (Stat'-i-see)—Sea Lavender

A most useful plant for airy effects in the border and bouquets. Will grow and slowly increase for many years in any good garden soil in sun or partial shade.

- ***latifolia**—From a rosette of large basal leaves springs an immense head often 1½' high and 2' across of many branched wiry little stems terminating in countless bright blue-purple flowers. May be dried as well as used for fresh cut flowers. 40c each; 3 for \$1.10; doz. \$4.00



SPIRAEA ASTILBE

SPIRAEA (Spy-ree'-a)—Meadow Sweet

Delightful herbaceous plants for a moist situation in sun or shade forming large clumps with many stalks of feathery fragrant flowers in broad loosely built heads. One of the "must haves."

aruncus—Graceful plumes of lacelike, creamy-white flowers in large spires on strong canes 4' tall. The large pinnate leaves are very ornamental all season.

40c each; 3 for \$1.00; doz. \$3.50

***filipendula hexapetala**—Deep green fern-like foliage forming a 4" mat with slender wiry stems 15" tall of deep cream flowers showing a pink reverse.

40c each; 3 for \$1.10

***filipendula fl. pl.**—A little more dwarf than the above and very double flowers. A well established clump in full bloom is one of the daintiest things imaginable.

45c each; 3 for \$1.15

palmata elegans—An exquisite shade of glowing, deep salmon-pink flowers in large branching heads freely produced on 4' stalks.

40c each; 3 for \$1.00; doz. \$3.50

ulmaria fl. pl.—Immense heads of wonderfully fragrant cream-colored double flowers on strong 4' canes, scenting the whole garden in July.

55c each; 3 for \$1.40

venusta (Martha Washington Plume)—Delightful rosy carmine flowers in well formed 10" heads blooming between palmata and ulmaria make this a most desirable border plant. 4'.

40c each; 3 for \$1.00; doz. \$3.50

One each of 6 Spiraeas \$2.45

SPIRAEA—Astilbe

Choice plants for shade or partial shade in a cool moist position, especially lovely growing among ferns.

Betsy Cuperius—Fine spikes of pink and cream. 60c each

***chinensis pumila**—Very dwarf sort with absurdly large heads of blue-toned deep rose flowers. 8".

65c each

Deutschland—A lovely pure white. 2'. 60c each

Fanal—A new vivid, brilliant red. This novelty is in a class by itself for bold color effect. 85c each

Gloria Supreme—Brilliant rose-pink. 65c each

Granat—Splendid crimson shaded salmon. 60c each

One each of the 6 Astilbes \$3.65

SATUREIA (Sat-eu-ry'-a)—Savory

***pygmaea**—A choice herb forming a refined little evergreen bush 6" tall and 4" across, surmounted by dainty lilac-pink flowers in midsummer. 40c each; 3 for \$1.10

***intricata**—Twisted, twining wiry little branches close to the ground make an excellent ground cover or foil for flowering bulbs. Sun. 40c each; 3 for \$1.10

One each of the 2 Satureias 75c

SAPONARIA (Sa-poh-nair'-i-a)—Soapwort

***occymoides**—Fine trailing plant with a fantastic number of deep rose pink Dianthus-like flowers in July and August. Fine for banks, ground covers, or trailing from rocks or walls. 40c each; 3 for \$1.10

TRADESCANTIA (Trad-es-kan'-ti-a)—Spider-wort

Showy, useful plants forming large grassy clumps and sending up endless blossom stalks all summer. Each morning there is a cluster of new fresh blooms, each flower being made up of three petals and a showy cushion of downy stamens. Will grow and flourish under almost any condition in sun or shade. Best in colonies of three or more.

***Blue Stone**—Unusually large deep blue flowers. Compact strong grower. 40c each; 3 for \$1.10; doz. \$4.00

***brevicaulis**—Lovely dwarf deep rose colored flowers. Rare and unusual. 40c each; 3 for \$1.10; doz. \$4.00

***Iris Prichard**—White flowers, heavily stained with soft and clear blue. Very lovely. 45c each; 3 for \$1.15; doz. \$4.25

***James C. Wequelin**—This is one of the choicest of garden flowers of recent European introduction. The flowers are about twice the size of the common variety and are a delightful pale blue. Tradescantia James C. Wequelin is of dwarf habit, grows about 10 to 12 inches high, and when in full bloom is one of the nicest things in the garden.

45c each; 3 for \$1.15; doz. \$4.25

***James Stratton**—Delphinium mauve shaded rose. Very large. 40c each; 3 for \$1.10; doz. \$4.00

***Leonora**—Deep glowing violet. 40c each; 3 for \$1.10; doz. \$4.00

***Pauline**—A glorious pale rosy mauve. 40c each; 3 for \$1.10; doz. \$4.00

***Purple Dome**—Huge flowers in clusters of clear bright purple. 40c each; 3 for \$1.10; doz. \$4.00

***Snowcap**—A new form with immense flowers of purest white. Very fine. 50c each; 3 for \$1.25

One each of the 9 Tradescantias \$3.50

THERMOPSIS (Thurm-op'-sis)—False Lupine

caroliniana—Showy, graceful plants for the back of the border, growing 4' tall with handsome locust-like leaves and willowy canes bearing large heads of golden yellow lupine-like flowers. A very permanent plant for a sunny location.

40c each; 3 for \$1.10

TROLLIUS (Trol'-li-us)—Globe-flower

A most glorious golden buttercup, having thick, waxy, incurved petals, inclosing a bunch of large anthers of deeper shade. A well arranged planting of Trollius is a breath-taking sight and never fails to excite admiration. Give plenty of moisture in any good soil in sun or partial shade. A magnificent cut flower.

Fireglobe—Immense globe-shaped flowers of deep burnt orange. 65c each; 3 for \$1.65; doz. \$6.50

Lemon Queen—Bright golden yellow. 55c each; 3 for \$1.35

ledebouri—A late flowering variety having very large rich orange flowers a little more open than the others. 50c each; 3 for \$1.25; doz. \$4.50

Orange Globe—Immense deep orange globes in May and again in the fall. 55c each; 3 for \$1.35

One each of the 4 Trollius \$2.10

TRITOMA (Tri-toh'-ma)—Torch Lily

pfizeri—A wonderful border plant blooming profusely in late summer and fall with huge spikes of red and yellow flowers, poker shaped—hence the common name, Poker plant. Should have a mulch of straw in cold regions or may be taken to the cellar and stored in sand. A plant that is well worth a little bother to winter.

40c each; 3 for \$1.10; doz. \$3.50

Goldmine—Striking yellow, shaded bronzy copper. Form bold clumps and furnish glorious cut flowers from July to frost. Wonderful garden effect. 65c each; 3 for \$1.85



THALICTRUM ROCHEBRUNIANUM

THALICTRUM (Tha-lik'-trum)—Meadow-Rue

Lovely specimens for sun or shade with fern-like foliage and feathery heads of fragrant flowers.

- adiantifolium**—Yellow, like maidenhair fern. 40c each; 3 for \$1.10
- aquilegifolium**—Purple. 40c each; 3 for \$1.10
- aquilegifolium roseum**—Pink. 45c each; 3 for \$1.15
- aquilegifolium album**—White. 45c each; 3 for \$1.15
- flavum**—Lovely tall yellow. 40c each; 3 for \$1.10
- ***minus**—Dainty foliage suitable for use in corsages or small flower arrangements. Flowers soft yellow with heavy brown anthers, also useful for cutting. 75c each
- purpurascens**—Lovely soft violet. 3'. 40c each; 3 for \$1.10
- Rochebrunianum, Lavender Mist**—A new form from the Orient that is similar to the old dipterocarpum but is much more vigorous and perfectly hardy. The lovely golden stamens are enclosed in a chalice of soft violet petals. 4'. 65c each; 3 for \$1.65

One each of the 8 Thalicttrums \$3.70

THYMUS (Tym'-us)—Thyme

Valuable plants having many uses such as carpeting, dry banks, covering barren exposed spots in the rockery, wall planting, covering the bulb bed or spring bulbs planted in rockery or border, between stepping stones, etc. All have evergreen aromatic foliage, and bloom profusely. An occasional shearing is beneficial.

- ***citriodorus argenteus**—Beautiful silver and white leaves.
- ***citriodorus aureus**—Golden variegated bushlets forming bright spots in the rockery or border the year around. Lemon scented.
- ***herba-barona**—Strongly caraway scented little trailer.
- ***lanuginosus**—Woolly prostrate foliage. Bright pink flowers. One of the best for stepping stones.
- ***nitidus**—Its shrubby growth is reminiscent of a silvery Irish Yew. 6".
- ***serpyllum Annie Hall**—Rapid grower with pink flowers over mats of fine hairy foliage.
- ***serpyllum album**—Lovely creeper with snow white flowers.
- ***serpyllum coccineum**—Mats of fine foliage hidden by clouds of red flowers in June.

40c each; 3 of one kind for \$1.10

One each of the 8 Thymes \$3.00

VERONICA (Ver-on'-i-ka)—Speedwell

A family whose value is greatly underrated. For rockeries, walls, banks, edging, etc., the dwarf members of the great clan are of outstanding importance. All are of the very easiest culture and bloom with such abandon as to rank them, in our opinion, among the very best of low growing plants. The taller sorts are useful in the border and their spikes of bloom work nicely in mixed bouquets.

- Blue Peter**—A new, very deep blue sort with heavy spikes 15" tall. 50c each; 3 for \$1.25
- ***Blue Spires**—12" fine sky blue. 40c each; 3 for \$1.10
- ***cupressoides nana**—Little evergreen shrub resembling a fat little Juniper. 12". 40c each; 3 for \$1.10
- ***Crater Lake Blue**—12" deep Gentian blue. 45c each; 3 for \$1.15
- ***incana**—Silvery foliage, blue. 40c each; 3 for \$1.10
- longifolia subsessilis**—A heavy grower with large spikes of deepest blue. 20". 50c each; 3 for \$1.25
- ***pectinata rosea**—Thick woolly mats of grey-green and innumerable rose flowers. 40c each; 3 for \$1.10
- ***rupestris**—Lovely mat forming sort that forms fine green carpets close to the ground. Myriads of bright blue flowers in spring. 2". 40c each; 3 for \$1.10
- ***rupestris alba**—Fine snow-white form. 45c each; 3 for \$1.15
- ***rupestris, Hav-a-look**—A lovely blue and white form that blooms both spring and fall. 50c each; 3 for \$1.25
- ***rupestris rosea**—Dainty lilac pink form. 45c each; 3 for \$1.15
- ***satureoides**—Distinctive mats of deep green and fine deep blue flowers in spring and fall. 45c each; 3 for \$1.15
- spicata**—Fine tall blue. 40c each; 3 for \$1.10
- ***spicata nana rosea**—An excellent new pink. Very choice rockery plant. 12". 50c each; 3 for \$1.25

One each of the 14 Veronicas \$5.85

VINCA (Vin'-ka)—Periwinkle

A very useful and ornamental evergreen vine quickly forming a dense ground cover of glossy foliage. Its adaptability to both sun and shade make it extremely useful. It flourishes under trees where grass will not grow and on steep banks it will make a tidy evergreen lawn that does not need to be mowed. It is used extensively in cemetery plantings and should find a home on every wall or large rockery.

- ***alpina**—A fine new and still quite rare sort having lighter colored leaves and very double red flowers. Perfectly hardy anywhere.
- ***minor**—Rich deep green leaves and large phlox-like blue flowers. There is no better ground cover than Vinca minor.
- ***minor alba**—A pure white-flowered form that is extremely scarce. A lovely sort in great demand.
- ***minor aurea variegata**—A perfectly hardy, golden yellow and green variegated leaved sort. A valuable plant lending a touch of color to the winter garden.
- ***minor, Bowles Variety**—A new European variety with broader foliage and heavier gloss. The flowers are larger and deeper blue. A profuse bloomer.

40c each; 3 of one kind \$1.10

One each of the 5 Vincas \$1.85; 3 each \$5.25

VIOLA (Vy'-o-la) CORNUTA—Tufted Pansy

The tufted pansies are among the most persistent bloomers of all hardy plants. Given a rich soil with plenty of moisture they will bloom continuously from early spring until freezing time in the fall. Cut all straggling branches back to force new growth and do not allow to seed.

- ***Arkwright Ruby**—Finest red.
- ***Avalanche**—Very large white.
- ***Blue Perfection**—Fine large light blue.
- ***chantreyland**—Glorious apricot.
- ***floriariensis**—Blue and cream.
- ***Jersey Gem**—Fine deep blue.

40c each; 3 of one kind for \$1.10

One each of above Violas \$1.95; 3 each \$5.50



VIOLA BETTER TIMES

VIOLA—New English Bedding Type

- ***Better Times**—This lovely new plant has flowers as large as a pansy but is true Viola type, stooling out from the ground to form a large clump which is covered from spring to fall with immense bright primrose yellow flowers. It is not only the most free flowering Viola we have ever seen but is also one of the most fragrant. True stock grown from division. **\$1.50 each; 3 for \$4.00**
- ***Eileen**—A rich royal blue with similar habit to the above. **\$1.00 each; 3 for \$2.50**
- ***Enchantress**—An outstanding new sort with very large medium dark lavender blooms. Strong grower. Free bloomer. Hardy. We cannot recommend it too highly. **\$1.00 each; 3 for \$2.50**
- ***Maggie Mott**—This is the lovely pure pale blue with creamy center that is used for borders and beds by the thousands in English gardens. **60c each; 3 for \$1.55**
One each of the New English Violas \$3.85

VIOLA—Various Species

- The following species are all happier in full sun although they will do fairly well in light shade. The popular belief that Violets are shade loving is a fallacy. With few exceptions they greatly prefer a well drained position in the sun.
- ***canadensis**—Large white tinted pink blooming all summer. Upright branching habit. 6". **40c each; 3 for \$1.10**
 - ***cucullata**—A lovely deep sky-blue, large flowered violet of real charm. **40c each; 3 for \$1.10**
 - ***cucullata rubra**—A new color in violets. Very deep rose-red. Unique in color and certainly one of the most satisfactory violets yet introduced. **55c each; 3 for \$1.40**
 - ***Double Russian**—Very double purple. Fragrant. **60c each; 3 for \$1.55**
 - ***Duchess de Parma**—A strong growing variety bearing quantities of very double soft blue rosette-like flowers which are highly scented. One of the most satisfactory double violets. Rare. **70c each; 3 for \$1.85; doz. \$7.00**
 - ***English**—A very large, long stemmed purple violet. Extremely fragrant and very prolific. **40c each; 3 for \$1.10**
 - ***hederacea**—Dainty heart-shaped leaves and myriads of lovely pink flowers all season. **45c each; 3 for \$1.15**
 - ***Freckles**—A strong and vigorous grower with large white flowers minutely dotted with blue. Distinct and different. **50c each; 3 for \$1.25**

- ***jooi**—Very dwarf, forming a solid mound of lilac-pink bloom before the leaves appear. Hardy, easy to grow and very lovely. **40c each; 3 for \$1.10**
- ***Larkspur Violet**—We have been unable to identify this lovely Violet brought to us under this name. It has very large heart-shaped leaves and innumerable large reddish orchid flowers. **50c each; 3 for \$1.25**
- ***odorata perpetual flowering**—New everblooming. Fragrant purple. **40c each; 3 for \$1.10**
- ***Palustris**—Profuse pure white. **40c each; 3 for \$1.10**
- ***priceana (Swiss Violet)**—Creamy yellow eye surrounded by rich deep blue beautifully veined. Each petal broadly margined with pure white. Strong, clean foliage. One of the very largest. **40c each; 3 for \$1.10; doz. \$3.50**
- ***Prince Henry**—A huge violet of pinkish mauve on 8" stems. New and very fine. **50c each; 3 for \$1.25**
- ***Rosina**—Bright rose-red. **50c each; 3 for \$1.25**
- ***Royal Robe**—Lustrous shade of deepest violet. Very large, long stemmed and fragrant. **50c each; 3 for \$1.25**
- ***septentrionalis, Gloriole**—A most lovely selection of this very rare violet having waxy white flowers with a sky blue eye. Glossy leaved and hardy. One of the finest yet. **50c each; 3 for \$1.25**

One each of the 17 Violets \$7.50

VENOSA (Vee-no'-sah)—Hardy Verbena

- ***Flame**—This vigorous creeping plant is one of the most prolific bloomers we know. It is literally covered with brilliant scarlet blossoms all season until heavy frost, and is excellent for the rockery or front row border. Should have winter protection in cold sections. **65c each; 3 for \$1.65**

YUCCA (Yuk'-ka)—Adams Needle

- Stately plants for sunny exposed positions having evergreen sword-like leaves. Perfectly hardy anywhere.
- filamentosa**—A bold subject sending up a strong stalk 5' tall with an immense branching head of large drooping creamy bells. **40c each; 3 for \$1.10; doz. \$4.00**

ZAUSCHNERIA (Zausch-neer'-i-a)—

- Humming Bird Fuchsia**
Showy shrublets with brilliant Fuchsia-like bloom in late summer and fall. Enjoys hot dry exposures. Very hardy.
- ***californica splendens**—A rampant grower forming wide mats of emerald green with myriads of brilliant scarlet trumpets on 6" stems. **60c each; 3 for \$1.55; doz. \$5.50**

FLOWERING SHRUBS

- The many and varied uses of flowering shrubs certainly justify their use in every planting, large or small. There is no better background for the large perennial border than these and for the small border a few shrubs judiciously placed add charm as well as affording light shade for the plants demanding protection from the full sun. They are also used extensively for foundation plantings, informal hedges, screens, etc. No planting is complete without at least a few of the better type shrubs.
- Almond**—Double pink flowering.
Strong 2-year, well branched, \$1.00 each; 3 for \$2.50; doz. \$8.50
 - Althea**—Rose of Sharon or Northern Hibiscus.
 - Amplissimus**—Lovely double red. **55c each; 3 for \$1.40**
 - Ardens**—Double pure violet. **55c each; 3 for \$1.40**
 - Jeanne d'Arc**—Glorious double white. **55c each; 3 for \$1.40**
 - rosea**—Singles in mixed colors. **45c each; 3 for \$1.15; doz. \$4.25**
 - Buddleia**—Butterfly Bush—May be treated as perennials in the colder regions and shrubs in the milder climates. As they bloom on the new wood, they may be cut to the ground each spring and will quickly form new flowering canes.
 - Dubonnet**—Exquisite French wine dubonnet. **55c each**
 - Fascination**—New lovely pink. **55c each**
 - Hartwegi**—Pure lilac blue. **55c each**
 - Red Plume**—Fine new red. **65c each**
 - White Feather**—Lacy new pure white. **65c each**
One each of the 5 Buddleias \$2.75

Calycanthus floridus—Sweetshrub. Large fragrant leaves and beautiful chocolate colored flowers. 4'.
45c each; 3 for \$1.15

Caryopteris Blue Mist—Lovely blue Spiraea blooming in late summer and fall. Exquisite. 2'.
65c each; 3 for \$1.65; doz. \$6.50

Cydonia japonica—The most brilliant of all spring flowering shrubs. Long blooming season.
Dwarf type—Orange scarlet flowers an inch and more across clothe the branches for weeks in early spring. 2'.
40c each; 3 for \$1.10
Tall type—The true upright growing type with deep rose-red flowers in rank profusion from the middle of April to the first of June. Strong plants.
55c each; 3 for \$1.40; doz. \$5.00

Daphne—See perennial list.

Deutzia crenata—Double pink. 45c each
Deutzia Pride of Rochester—Double white. 45c each

Euonymus nanus—Dwarf evergreen with trailing branches and lovely scarlet fruits. 3'. 55c each; 3 for \$1.45

Forsythia spectabilis—Goldenbell. 45c each; 3 for \$1.15

Hydrangea arborescens—White. 45c each; 3 for \$1.15

Hydrangea hortensis (French Hybrid)—See perennial list.

Hydrangea paniculata—Pink shrub Hydrangea.
50c each; 3 for \$1.25; doz. \$4.50

Hypericum densiflorum—Strong growing hardy shrub growing 6' tall, completely covered with brilliant yellow bloom in mid-summer. 45c each; 3 for \$1.15; doz. \$4.25

Kerria japonica—Single yellow. 45c each; 3 for \$1.15

Kolkwitzia amabilis—Beauty Bush. 60c each; 3 for \$1.55

Lilacs—See Syringa.

Lonicera fragrantissima—Winter Honeysuckle. 40c each
Lonicera morrowi—White Honeysuckle. 40c each
Lonicera tartarica rosea—Pink Honeysuckle. 45c each
Philadelphus virginal—Double Mock-Orange. 75c each
Robina hispida—Rose Acacia or pink Locust. Bush form.
40c each; 3 for \$1.10

Rose Austrian Copper—A very hardy bush form having brilliant coppery red single flowers with deep golden yellow reverse. Strong 2 yr. \$1.25 each; 3 for \$3.50

Rose hugonis (Golden rose of China)—A large symmetrical shrub, almost evergreen, and entirely hardy anywhere without protection. Long arching sprays of soft yellow single roses. One of the most worth-while shrubs introduced in recent years. Strong 1 yr. 50c each; 3 for \$1.25

Rhus cotinus—Smoke bush with large heads of cottony purple flowers and fine bronze foliage. 50c each; 3 for \$1.25

Salix Capre—French Pussy Willow. 45c each
Salix purpurea—Dwarf blue leaved Arctic Willow. 40c each

Spiraea Anthony Waterer—Red Spiraea. 45c each
Spiraea billardi—Fluffy conical shaped heads of rich salmon pink flowers all season. 45c each; 3 for \$1.15
Spiraea prunifolia—Double flowered Bridalwreath. Very double white flowers cover the branches before the leaves appear. Strong plants. 55c each; 3 for \$1.40; doz. \$5.00
Spiraea tricarpa—Korean Spiraea. 45c each
Spiraea Van Houttei—Common Bridalwreath. 40c each

Syringa, Hybrid French Lilacs
Belle de Nancy—Double violet-red.
Charles Jolly—Double rich red.
Ludwig Spaeth—Single large red.
Mme. C. Perier—Double creamy white.
Pres. Grevy—Large double blue.

Any of the above 12-18" size \$1.25 each; all five \$5.25

Syringa rothamagensis—Red Persian Lilac. 45c each
Tamarix africana—Early pink form. Spectacular. 50c each
Viburnum burkwoodi—A superb new shrub worthy of a choice spot in every garden, rapidly forming shapely 5' bushes with heavy glossy foliage, evergreen in mild winters and deciduous in cold, but entirely hardy anywhere. Lovely waxen buds of deep coral opening to soft pink blooms with intense, spicy carnation fragrance. Unexcelled for cutting, corsages or flower arrangements.
Strong 1 year: 85c each; 3 for \$2.50; 12 for \$9.00
Sturdy 2 year: \$1.35 each; 3 for \$3.85

Viburnum opulus—Common Snowball. 45c each
Viburnum opulus nanus—Compact leafy shrublets suitable for edging or spotting along the perennial border. Pretty red twigs during fall and winter. 12".
45c each; 3 for \$1.15; doz. \$4.25

Vitex agnus-castus—A distinctive shrub with handsomely divided leaves and large heads of violet blue flowers from July to frost. 45c each; 3 for \$1.15; doz. \$4.25

Weigela floribunda—Extra fine strong growing red. 45c each; 3 for \$1.15
Weigela hendersoni—Deep pink. 40c each; 3 for \$1.10
Weigela lutea—Lovely bronzy foliage and clear yellow flowers. 40c each; 3 for \$1.10
Weigela variegata—Variegated form. 45c each; 3 for \$1.10

HARDY VINES

Aristolochia tomentosa—Dutchman's Pipe Vine. Immense heart-shaped leaves and curious pipe-shaped flowers.
55c each; 3 for \$1.40

Bignonia radicans—Huge trumpet-shaped flowers of rich deep orange, during late summer and fall. A strong growing vine that is excellent for covering old fences or unsightly spots. Extremely showy and very satisfactory.
50c each; 3 for \$1.25; doz. \$4.50

Celastrus scandens—Bittersweet—This is the popular vine that forms masses of orange scarlet fruits so loved by the winter birds. Will not fruit unless two or more are planted together. Heavy plants, 3 for \$1.35; 6 for \$2.50; doz. \$4.50

Clematis—This exquisite vine likes cool feet. It should be planted with an eastern or northern exposure or with a bush or strong growing plant to shade its roots.
Baron Veillard—Splendid large rose pink. \$1.25 each
Henryi—Fine pure white. \$1.25 each
Jackmani—Popular rich royal purple. \$1.25 each
Mme. Edw. Andre—Very large rosy-carmine. \$1.25 each
Ramona—Very large clear pale blue. \$1.25 each
One each of the 5 Clematis vines \$5.85

Euonymus radicans colorata—A strong growing evergreen vine that turns rich mahogany red in winter. Very useful for covering tree trunks, or posts as well as buildings and fine for naturalizing under trees and shrubs as a ground cover. 50c each; 3 for \$1.25; doz. \$4.50

Euonymus kewensis variegata—A slow growing evergreen vine with beautifully variegated leaves that take on lovely pinkish tints during the fall and winter. Especially lovely trained on the trunks of trees and posts, or used as a ground cover. 55c each; 3 for \$1.40

Lonicera heckrotti—A new everblooming vine with luxuriant deep green foliage which is not bothered by insects. Very large clusters of bright flame red flowers with a chrome-yellow throat, richly fragrant, and of real value as a cut flower. 65c each; 3 for \$1.65

Polygonum auberti—One of the fastest growing vines cultivated. Under proper conditions a single plant will cover a space 25 ft. square in a single season. Unexcelled for trellises, summer houses, garages, and the fastest growing ground cover we know of. In the late summer and fall the whole vine is a mass of foamy white flowers that shimmer like silver in the sun. 75c each; 3 for \$2.00

Wisteria sinensis—Very popular rapid climber having long racemes of glorious purple pea-shaped flowers.
65c each; 3 for \$1.65

TIGRIDIA (Ty-grid'-i-a)—Mexican Shell Flower
Exotic summer flowering bulbs with gorgeous cup-shaped flowers of yellow rose and red with heavily spotted throat. Easiest culture for a sunny location. Lift and store as for Gladiola bulbs. 6 for 85c; doz. \$1.50; 100 for \$10.00

Please Read Carefully Before Ordering

ORDER EARLY—Unless specific instructions are given for later shipment we fill orders in rotation received. We sometimes get a bit behind during the rush season and the early order, of course, gets out first.

CONCERNING POSTAGE—ALL SHIPMENTS WILL BE SENT EXPRESS COLLECT UNLESS POSTAGE IS INCLUDED. 15% East of the Mississippi and Alaska; 10% West of the Mississippi river. Shipments over \$10.00 in the states of Idaho, Washington, Oregon will be prepaid.

WE WILL PREPAY—We will prepay Iris orders amounting to \$3.00 or more to any part of the U. S. A. This applies to Iris alone and other plants will not be included in the same shipment.

RESPONSIBILITY—While we endeavor to fill all orders with the greatest of care, we can accept no responsibility, either express or implied for failure with stock purchased from us as there are too many existing conditions over which we have no control. Any stock that is not received in good condition will be replaced if we are notified within 5 days after receipt of shipment. No complaints will be entertained later than this.

TYPE OF PLANTS—We do not ship worn out field grown plants. Our entire stock is re-set each season at very great expense, but it insures our customers healthy young plants that establish easily and grow vigorously. In most cases these are supplied with a small earth ball which helps to maintain life and vigor while in transit. Do not remove this earth ball. If dry, dip lightly in water and plant intact.

Our packing is done by expert packers and even with the slow transportation of these times our stock goes to every state in the union in excellent condition.

Canadian Shipments—Our Canadian customers must first obtain a permit from the Department of Agriculture at Ottawa. Plants will then be shipped as requested. If shipment is to be made by mail, please add 15% for postage.

Asterisk (*)—All plants thus marked are suitable for the front row border, edging, rockeries, wall gardens, etc.

Sales Tax—Washington residents will please add 3% sales tax.

Cash With Order—Please send remittance with order as we do not like to ship C. O. D. It is an additional expense to you and often causes delay.

Minimum Order—On orders for less than \$2.00 please add 35c for packing and handling charges.

May We Substitute?—When permitted to substitute we always give extra value even if no substitute is necessary. Our collection is large and contains many items of which stock is limited and if we are sold out we appreciate the opportunity of substituting.

Correspondence—We are glad to answer questions at all times but ask that you please use a separate sheet and not include on order blank.

NOTE—PLEASE DO NOT ASK US TO ACCEPT ORDERS FOR THREE PLANTS OF DIFFERENT KINDS AT THE THREE OF ONE KIND RATE. For instance: Many of the 35c Iris are listed at 35c each or three for 90c. The price for three different 35c Iris is \$1.05. We cannot accept orders at less than catalogued prices.



Fantail Pigeons

LIVE ORNAMENTS FOR YOUR GARDEN

Nothing is more lovely than these beautiful birds strutting about a garden. They are as proud as peacocks of their huge, beautiful tails and fairly quiver with excitement as they strut about. Their soft cooing is always delightfully soothing, and as they are not very strong flyers, due to the weight of the heavy tail, they are always close to their home which can be regulated at will. An artistically built dove cote atop a post, or a shelf placed inside an out building with a small hole cut through to let them in and out will do nicely. We can supply black, blue, red, silver, white, and mixed colors at \$5.00 a pair. Saddles \$7.50 a pair. For specimen birds write for prices.

Visitors Welcome

In our display beds we have well developed specimens of practically everything listed in this catalog as well as many hundreds of other perennial novelties. This year we are growing about 400 varieties of Tall Bearded Iris, including many new ones. The first week in June is the best time to see these. In the fall we will have about 300 varieties of the finest Chrysanthemums in flower. The public is cordially invited to visit these displays at any time. We are located just one mile from the center of Spokane's business district. To reach us, go north on Division Street to Boone Avenue (Burgan's Big Store). We are just one block north and one block east of there.

Baby Evergreens

Well rooted little plants that will establish easily and in two or three years make excellent material for foundation plantings.

Boxwood—Splendid broad leaved evergreen.

Colo. Blue Spruce—Fine blue green.

Juniper andorra—Silvery. Prostrate.

Juniper communis—Blue. Prostrate.

Globe Arborvitae.

Juniper, Irish—Silvery pyramid.

Juniper pfitzeri—Handsome grey green. Prostrate.

Juniper plumosa—Lovely plummy Juniper.

Mugho Pine—Much branched very dwarf pine suitable for foundation planting.

Pyramidal Arborvitae.

50c each; 3 for \$1.25; doz. \$4.50

EXTRA EARLY ENGLISH MUMS

A superb group of extra early flowering sorts. Will make a magnificent showing from the first of August until frost.

Alferton Beauty—Coppery orange.
Bronze Beauty—Huge reddish bronze.
Canary—Luminous bright canary.
Daffodil—Sparkling golden yellow.
Dawn—Immense bright pink.
Fair Maid—Ivory tipped pink.
Gertrude—Quilled bright salmon.
Golden West—Deep golden yellow.
H. Lockwood—Incurved red and gold.
Hillcrest—Fine deep red.
Jean Harlow—Glorious golden amber.
Kate McIvor—Lovely primrose yellow.
Lady F. Clark—Largest incurved yellow.
Mayland Red—Fine flaming scarlet.
Mrs. Patie—Large incurved rose-red.
Muscateer—Incurved old ivory.
Nellie Richardson—Soft rosy mauve.
Pink Profusion—Immense pink sprays.
Pluie d'Argent—Pure glistening white.
Salmon Frieda—Superb bright salmon.
Stella—Rich clear shrimp pink.
Tibshelf Glory—Red, copper, and gold.
Wharfdale—Magnificent tyrian rose.
Westbourne—Deep reddish chestnut.
Woking Bronze—Intense coppery brown.

Your choice 65c each; any 5 for \$2.75; any 10 for \$5.00; all 25 for \$11.25

NEW

WASHINGTON STATE COLLEGE CHRYSANTHEMUMS

We are happy to be the first to introduce these new Chrysanthemums developed at our own State College. They are especially adapted to our short seasons and brilliant sunshine. Blooming in late summer and fall they do not bleach and are extremely frost resistant. All are dwarf, bushy growers and extremely free flowering. We cannot recommend them too highly.

Arikara—18" cushions completely covered with reddish-orange bloom.
Dakota—Glittering yellow flowers on beautifully rounded mounds; 16" tall.
Flicka—Very compact grower with innumerable pinkish copper flowers; 16".
Hidatsa—Small cushion type producing myriads of brilliant garnet red flowers; 12".
Waku—Glorious medium sized white that tends to be spidery in type. Sturdy 24" bushes.

85c each; all 5 for \$3.75

ROYAL FERN

A spectacular hardy Fern for a moist shady location, growing 3 ft. tall with huge fronds of coppery green. Extra heavy large roots.

\$1.00 each; 3 for \$2.50; doz. \$8.50

SPECIAL ROSE OFFER

For those that want a fine Rose garden that will produce a wealth of bloom this season, this splendid offer should make instant appeal. We have a fine lot of two and three year old Hybrid Tea Roses that must be moved this spring. There are many varieties but too few of a kind to warrant listing. Therefore, we offer these in our selection only at greatly reduced prices. All will be correctly labeled and trimmed ready for planting. No shipments later than April 15th, 1951.

12 for \$10.00; 25 for \$18.50

NEW SPOON CHRYSANTHEMUMS

A charming collection of newcomers. Larger than the type with broader petals in a wider color range.

Apricot Spoon—Apricot-bronze.
Cardinal Spoon—Lovely Old Rose
Charm Spoon—Bright red.
Fuchsia Spoon—Deep Fuchsia purple.
Ivory Spoon—Rich ivory white.
Loveliness Spoon—Glorious new pink.
Rose Spoon—Intense rose pink.
Ruby Spoon—Brilliant ruby-red.

65c each; all 8 for \$3.25

SPECIAL PREPAID BARGAIN IRIS COLLECTIONS

Please order by group numbers. Special premiums offered in Bearded Iris Section do not apply to these bargain groups.

GROUP No. 2

(\$12.50 Value) . . . \$10.00

Berkeley Gold	Pink Reflection
Blue Frills	Silver Susie
Copper Rose	Spindrift
Master Charles	Sylvia Murray
Moonlit Sea	Tapestry Rose

★ ★ ★

GROUP No. 4

(\$7.55 Value) . . . \$6.00

Ann Newhard	Golden Spike
Balmung	Grand Canyon
Bandmaster	Indiana Sunset
Bright Melody	Jake
China Maid	Melitza

★ ★ ★

GROUP No. 6

(\$6.85 Value) . . . \$5.00

Lighthouse	Nightfall
Los Angeles	Old Parchment
Melanie	Prince of Orange
Master Charles	Royal Scot
Miss California	Sable

★ ★ ★

GROUP No. 3

(\$9.25 Value) . . . \$7.50

Blue Shimmer	Mexico
Captain Wells	Moonlight Madonna
Coral Mist	Ola Kala
Gypsy Baron	Prairie Sunset
Mary Vernon	Tishomingo

GROUP No. 5

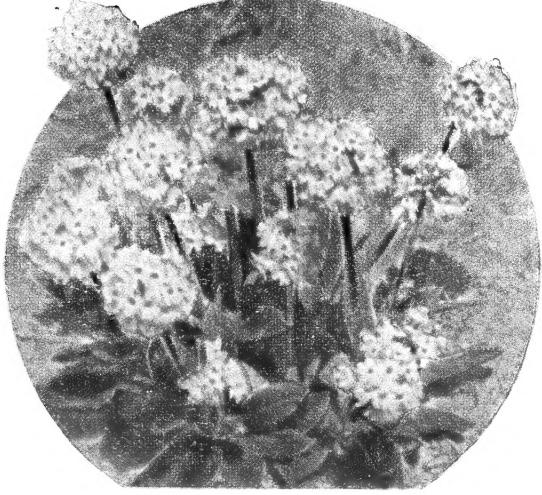
(\$6.60 Value) . . . \$5.00

Aubanel	Frank Adams
Amigo	Icy Blue
City of Lincoln	Late Sun
Corinthe	Matterhorn
Fair Elaine	Ranger

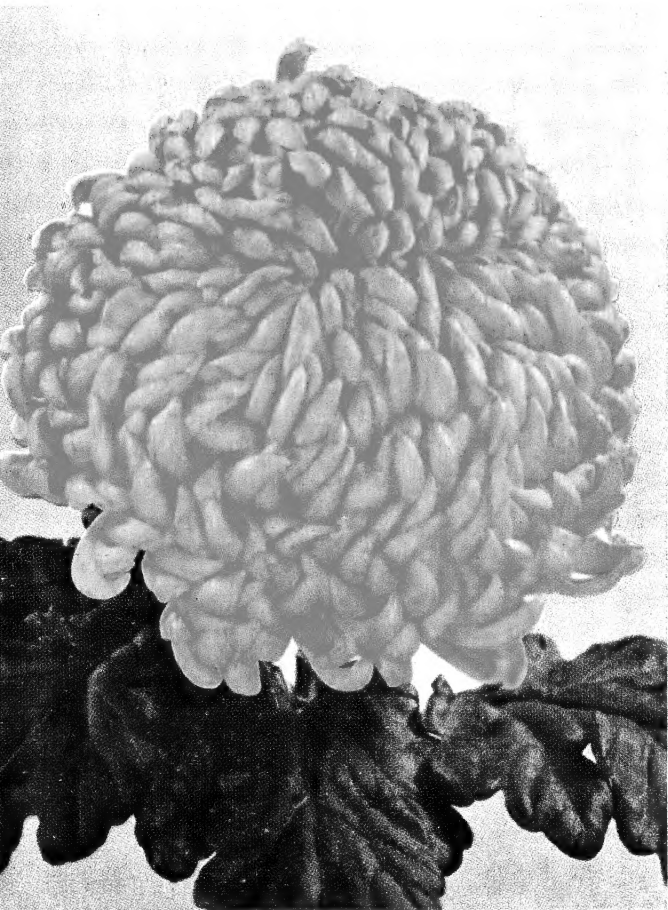
GROUP No. 7

(\$5.75 Value) . . . \$4.50

Angelus	Orloff
Caroline Burr	Ruth Pollock
Elsa Sass	Siegfried
Golden Treasure	Sheriffa
Missouri	Snow Velvet



PRIMULA CASHMERIANA (Page 29)



ENGLISH CHRYSANTHEMUM H. SUTCLIFFE (Page 9)



BORDER QUEEN
BLUE BOY

MARY LOUISE
SALMON GLOW
SAN ANTOINE (Page 26)

LEO SCHLAGATER
ROSY BLUE

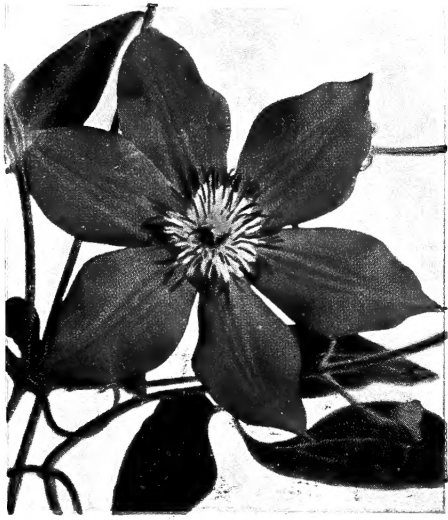
One plant each of these 7 SUPERB PHLOX s3.10

HEUCHERA (Page 18)
Queen of Hearts, Snowflake, Rosamundi

ASTER FRIKARTI (Page 6)

POLYANTHUS PRIMROSE (Page 29)

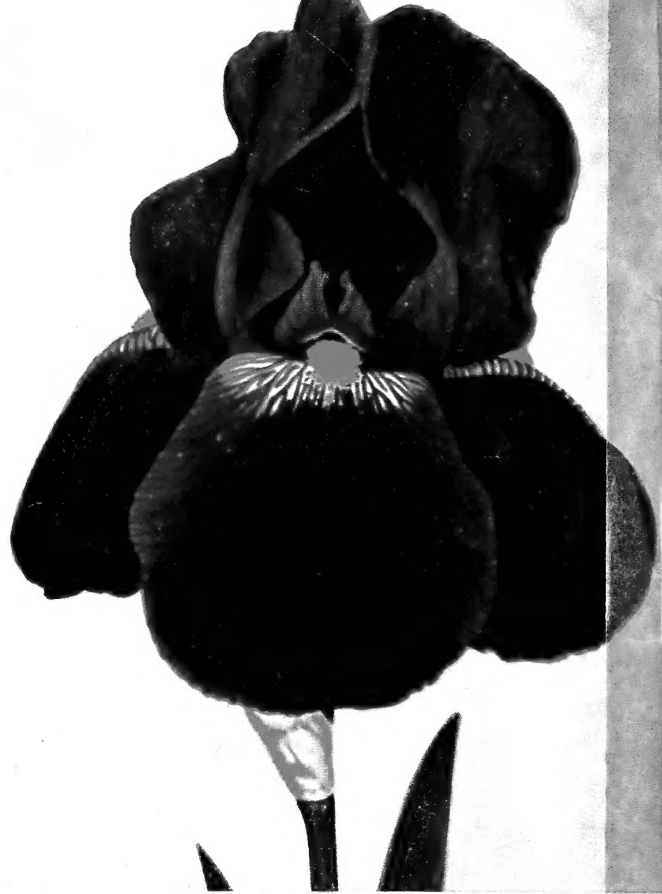




CLEMATIS JACKMANI (Page 34)



DIANTHUS LITTLE JOE (Page 12)



BEARDED IRIS SOLID MAHOGANY (Page 22)



GEUM BORISI (Page 15)



ANEMONE JAPONICA (Page 5)



FRITHILLARIA (Page 14)



CHRYSANTHEMUM QUAKER MAID (Page 10)



CYDONIA JAPONICA (Page 35)

LAMB NURSERIES

East 101 Sharp Avenue
SPOKANE 11, WASHINGTON

Sec. 34.66 P. L. & R.
U. S. POSTAGE
PAID
SPOKANE, WASH.
Permit No. 1349

Librarian
U. S. Dept of Agri-
culture
Bureau of Plant Industr
Washington, D. C.

Return Postage Guaranteed